

PRODUCT DATA SHEET



PRODUCT CODE
MI19091C

RANGE
Burlington

DESCRIPTION
Mirror 1909 Fixing One Pair Chrome

WEBSITE LINK [Click Here](#)



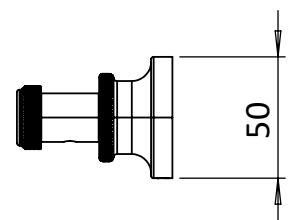
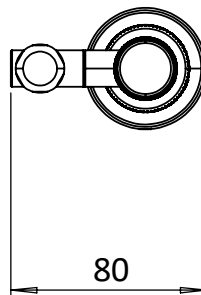
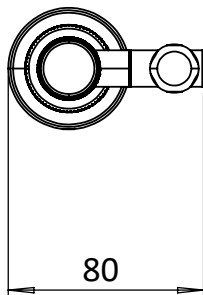
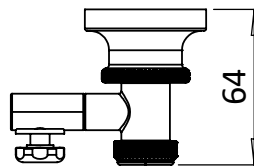
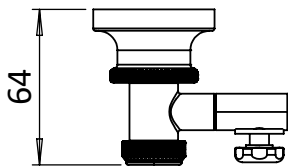
CATEGORY	Cabinets & Mirrors
WARRANTY DETAILS	2 Years
COLOUR	Chrome
FINISH APPLICATION	Electroplated
PRIMARY MATERIAL	Brass
SECONDARY MATERIAL	304 Stainless Steel
INSTALL TYPE	Wall Mounted
PRODUCT WIDTH MM	80
PRODUCT HEIGHT MM	50
PRODUCT LENGTH MM	64
PRODUCT NET WEIGHT KG	0.69
STANDARDS	ISO 9001

HANDING MIRROR & CABINETS	Universal
TEMPERATURE CHANGING	No
SHELVES ADJUSTABLE	No
SHAVER SOCKET INCLUDED	No
DIMMABLE	No

TECHNICAL DIMENSIONS

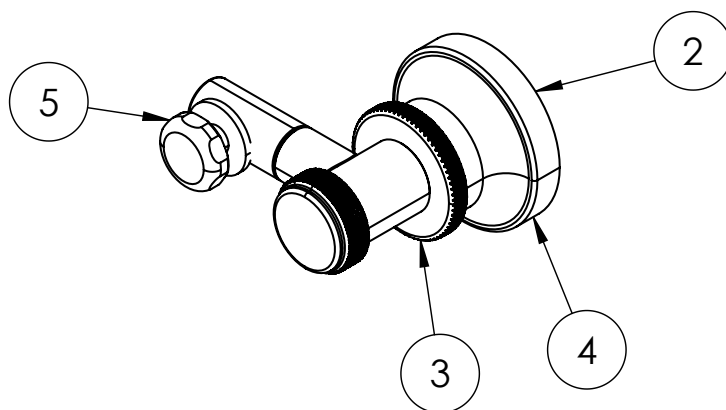
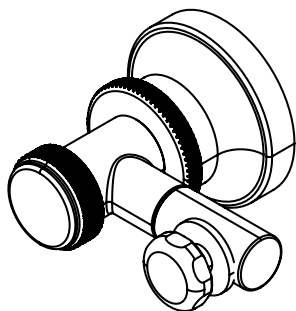
Dimensions in mm unless otherwise specified.

Tolerances (per material type) apply.



SPARES LIST

Only the parts labelled are available as spares.



NUMBER	PART CODE	DESCRIPTION
1	SP1951	Screw Bag for Mirror 1909 Fixing
2	SP1952	Wall Mounting Plate for Mirror 1909 Fixing
3	SP1953	Grub Screws For Mirror 1909 & 1850 fixings
4	SP1960	Grub Screws for wall plate of Mirror 1909 Fixing
5	SP1957	Hexagon Tighten Nut for fixing Mirror Chrome
	SP1958	Hexagon Tighten Nut fixing Mirror Gold
	SP1959	Hexagon Tighten Nut fixing Mirror Brushed nickel