

PRODUCT DATA SHEET

Burlington®

PRODUCT CODE  
TF1S BNKL

RANGE  
Trent

DESCRIPTION  
Single Outlet Shower Valve & Arm  
Brushed Nickel



CATEGORY	Brassware
WARRANTY DETAILS	15 Years
COLOUR	Brushed Nickel
FINISH APPLICATION	PVD
PRIMARY MATERIAL	Brass
INSTALL TYPE	Wall Mounted
PRODUCT WIDTH MM	120
PRODUCT HEIGHT MM	263
PRODUCT DEPTH MM	163
PRODUCT NET WEIGHT KG	3.35
STANDARDS	BS EN 1111:2017

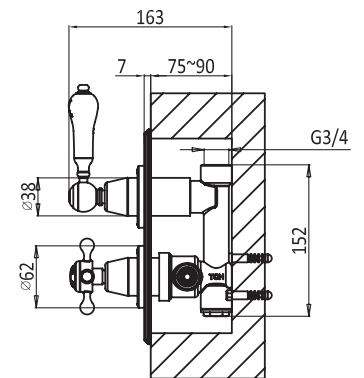
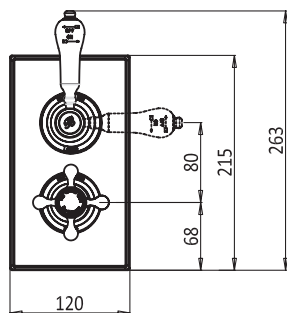
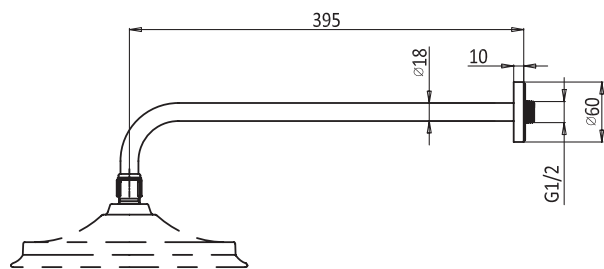
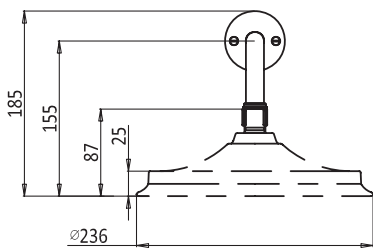
MINIMUM PRESSURE (BAR)	0.5
MAX WORKING PRESSURE (BAR)	5
NUMBER OF OUTLETS	1
HEADWORK	33mm
INLET CONNECTIONS THREAD	G3/4"
OUTLET CONNECTIONS THREAD	G1/2"
WASTE INCLUDED	No
ANTI-SCALD	Yes
ENERGY SAVING	No
SHOWER HOSE & HANDSET ARE INCLUDED	No

PRESSURE (BAR)	0.2	0.5	1	2	3	4	5
PRIMARY FLOWRATE		5.15	8.11	11.44	14.36		
HANDSET FLOWRATE							
MESSAGE FLOW RATE							
AIR FLOW RATE							
WIRE FLOW RATE							
WATERFALL FLOW RATE							
MIST FLOW RATE							
HANDSPRAY FLOW RATE							

## TECHNICAL DIMENSIONS

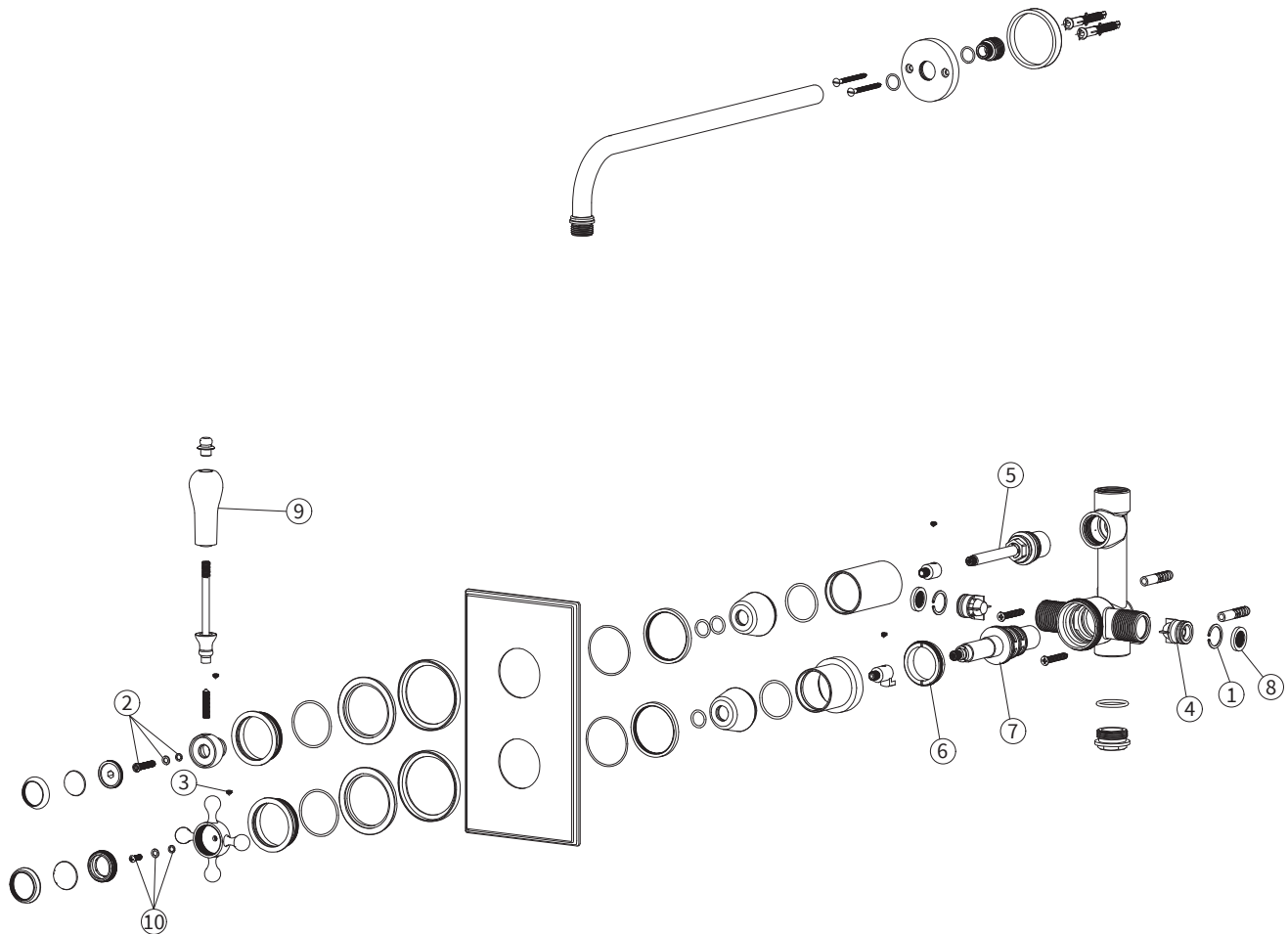
Dimensions in mm unless otherwise specified.

Tolerances (per material type) apply.



## SPARES LIST

Only the parts labelled are available as spares.



NUMBER	PART CODE	DESCRIPTION
1	SP1477	Retaining ring
2	SP1692	Fixing screw sets (including flat washer and spring washer)
3	SP599	Grub screw (M4x4)
4	SP700	Check valve
5	SP313	Hent F3 flow control cartridge
6	SP959	Retaining nut
7	SP314	Temperature control cartridge
8	SP842	Inlet filter
9	SP52	Ceramic part of lever (plain version, without any texts)
10	SP93	Fixing screw and washer