

PRODUCT DATA SHEET

Burlington®

PRODUCT CODE
FC9BM

RANGE
Furniture

DESCRIPTION
Freestanding 1300 Vanity Unit Matt Black

WEBSITE LINK [Click Here](#)



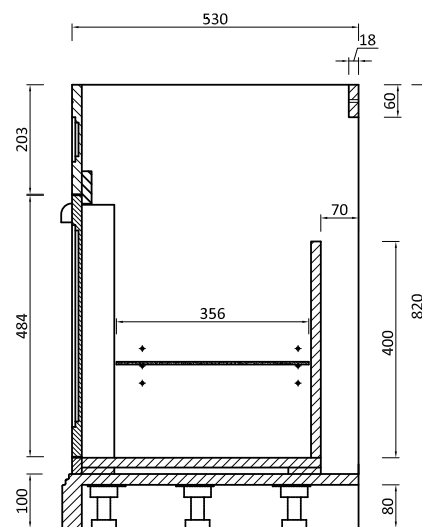
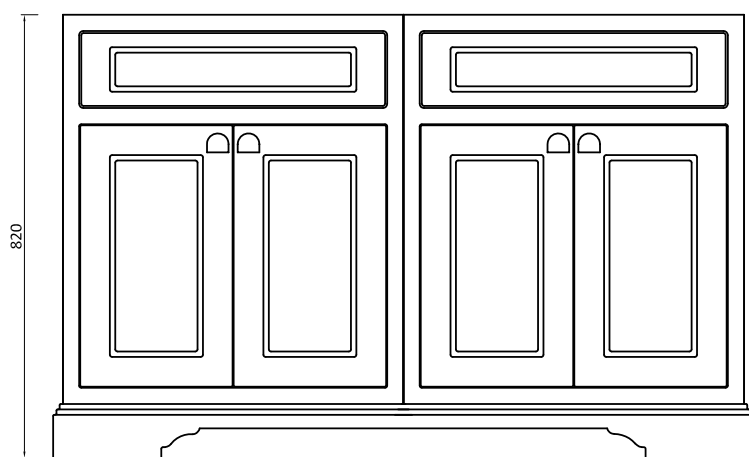
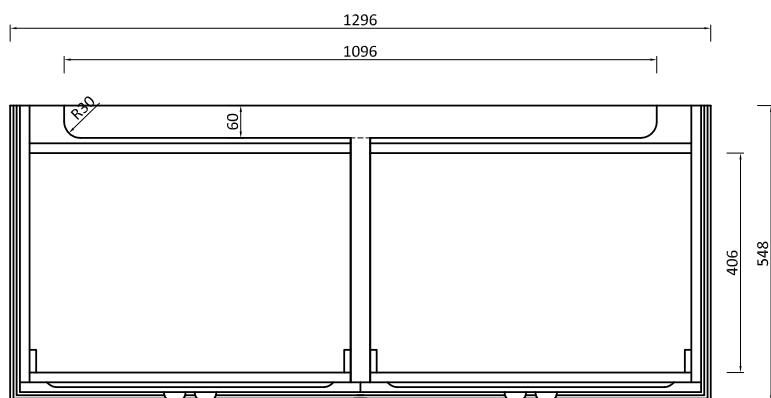
CATEGORY	Furniture
WARRANTY DETAILS	10 Years
COLOUR	Matt Black
FINISH APPLICATION	Lacquered
PRIMARY MATERIAL	MDF
INSTALL TYPE	Floor Standing
PRODUCT WIDTH MM	1296
PRODUCT HEIGHT MM	820
PRODUCT DEPTH MM	548
PRODUCT NET WEIGHT KG	60.5

DRAWER BOX	MDF
DRAWER RUNNERS	Soft Close Hinge
DRAWER ADJUSTMENT	2 way adjustment
WALL HANGERS	Yes
ADJUSTABLE FEET	Yes
DRAWER CAPACITY	15kgs

TECHNICAL DIMENSIONS

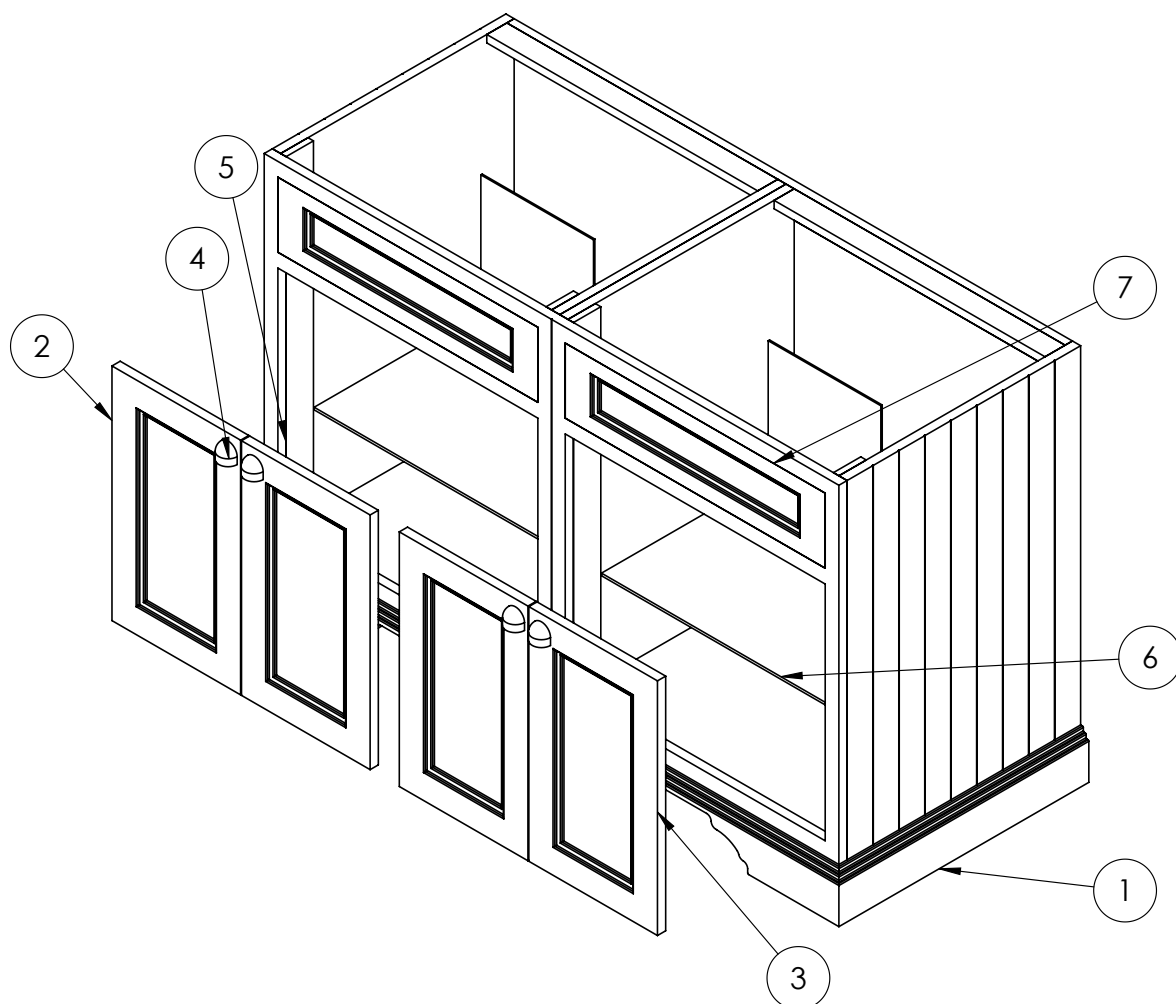
Dimensions in mm unless otherwise specified.

Tolerances (per material type) apply.



SPARES LIST

Only the parts labelled are available as spares.



NUMBER	PART CODE	DESCRIPTION
1	P130BM	Plinth for Freestanding 130 Vanity Unit - Matt Black
2	SPFF8DP_BM_LH	Door Panel LH for FF8, FC9, FC1, FC2, FC3 Matt Black
3	SPFF8DP_BM_RH	Door Panel RH for FF8, FC9, FC1, FC2, FC3 Matt Black
4	SP653	1x handle 2x screws 2x washers Burling
5	SP949	Burlington spare furniture hinges (Pair)
6	SP762	Burlington rectangular glass shelf for F
7	SPFF8TF_BM	Top fascia for FF8BM & FC9BM