

PRODUCT DATA SHEET

Burlington®

PRODUCT CODE
GU0452SCW

RANGE
Guild

DESCRIPTION
Guild Cloakroom Basin 450mm 2TH
White



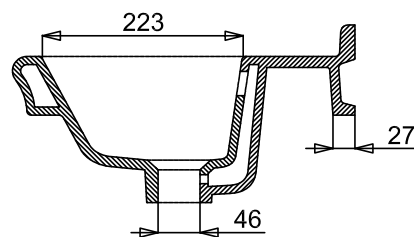
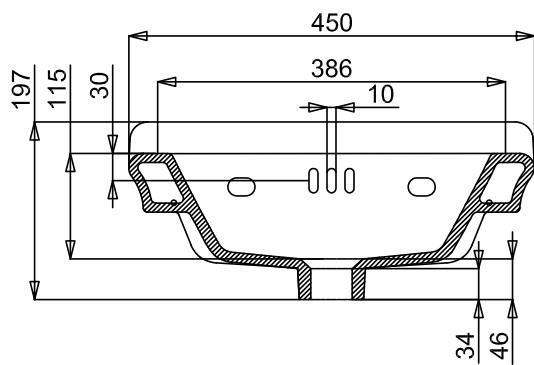
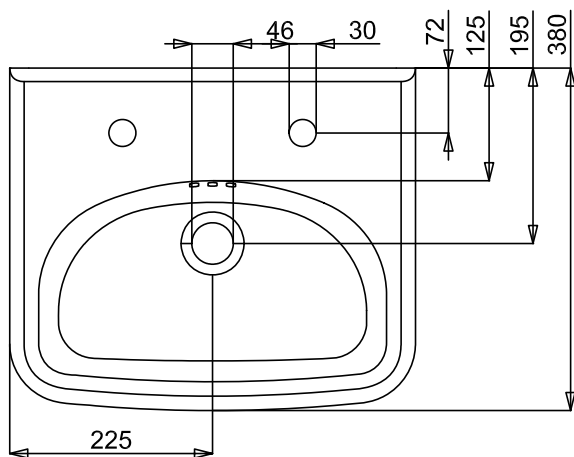
CATEGORY	Sanitaryware
WARRANTY DETAILS	Lifetime
COLOUR	Gloss White
FINISH APPLICATION	Glazed
PRIMARY MATERIAL	Fine Fire Clay
INSTALL TYPE	Wall Mounted
PRODUCT WIDTH MM	450
PRODUCT HEIGHT MM	197
PRODUCT DEPTH MM	380
PRODUCT NET WEIGHT KG	9.2
STANDARDS	EN 31:2011, EN 14688:2015

TAP HOLES	2TH
FIXINGS INCLUDED	No
OVERFLOW	Yes
BASIN WASTE SIZE	45mm

TECHNICAL DIMENSIONS

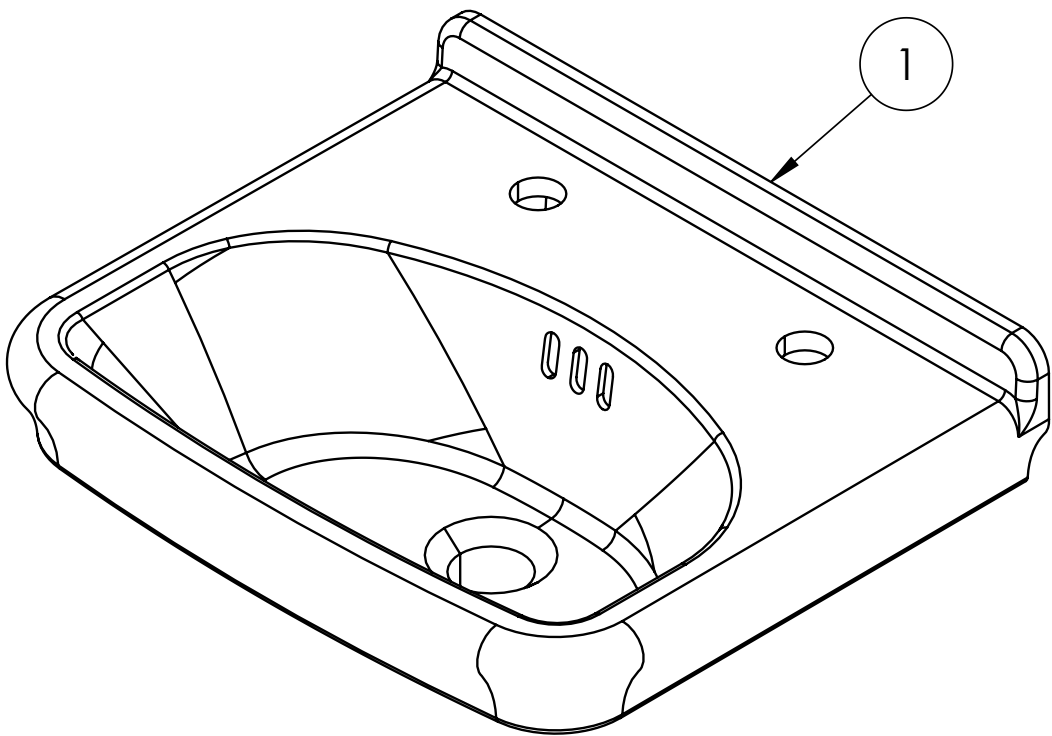
Dimensions in mm unless otherwise specified.

Tolerances (per material type) apply.



SPARES LIST

Only the parts labelled are available as spares.



NUMBER	PART CODE	DESCRIPTION
1	SP1714	Basin fixings Burlington/ Britton basins