

# PRODUCT DATA SHEET



## PRODUCT CODE

V22 BNKL

## RANGE

Victorian

## DESCRIPTION

Extended Vertical Riser Brushed Nickel



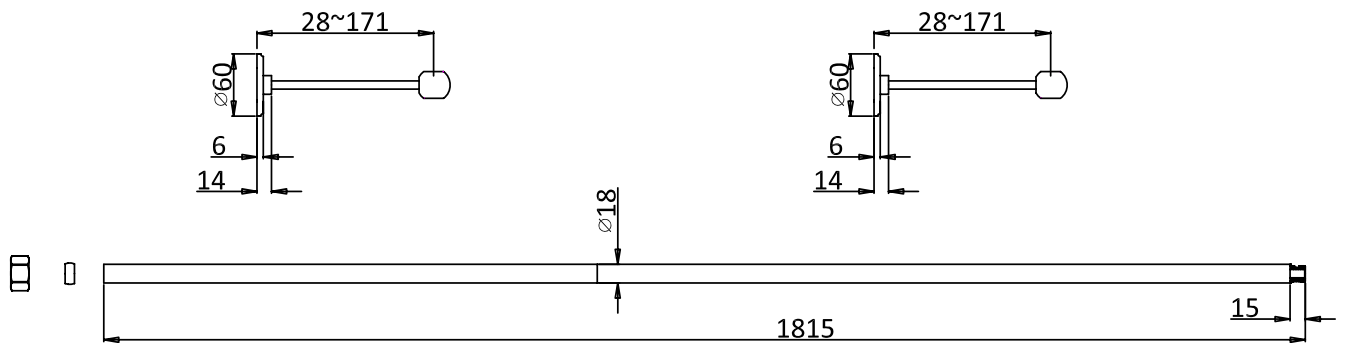
CATEGORY	Brassware
WARRANTY DETAILS	15 Years
COLOUR	Brushed Nickel
FINISH APPLICATION	PVD
PRIMARY MATERIAL	Brass
INSTALL TYPE	Basin Mounted
PRODUCT WIDTH MM	60
PRODUCT HEIGHT MM	1814.6
PRODUCT LENGTH MM	170
PRODUCT NET WEIGHT KG	1.84

PRESSURE (BAR)	0.2	0.5	1	2	3	4	5
PRIMARY FLOWRATE							
HANDSET FLOWRATE							
MASSAGE FLOW RATE							
AIR FLOW RATE							
WIRE FLOW RATE							
WATERFALL FLOW RATE							
MIST FLOW RATE							
HANDSPRAY FLOW RATE							

## TECHNICAL DIMENSIONS

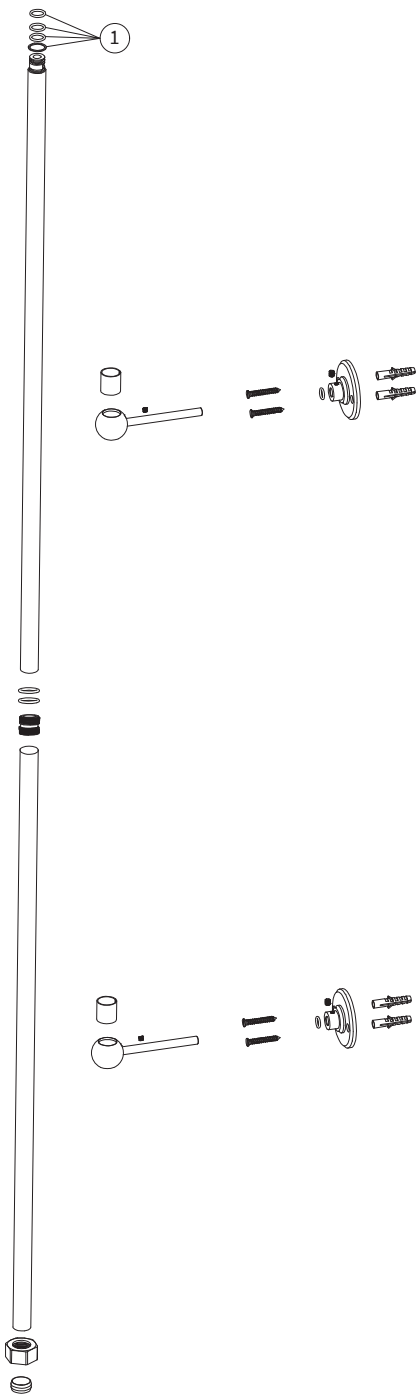
Dimensions in mm unless otherwise specified.

Tolerances (per material type) apply.



SPARES LIST

Only the parts labelled are available as spares.



NUMBER	PART CODE	DESCRIPTION
1	SP806	3x rubber o rings and 1x plastic washer