

PRODUCT DATA SHEET

Burlington®

PRODUCT CODE
FF8MG

RANGE
Furniture

DESCRIPTION
Freestanding Basin Unit Doors Matt Green



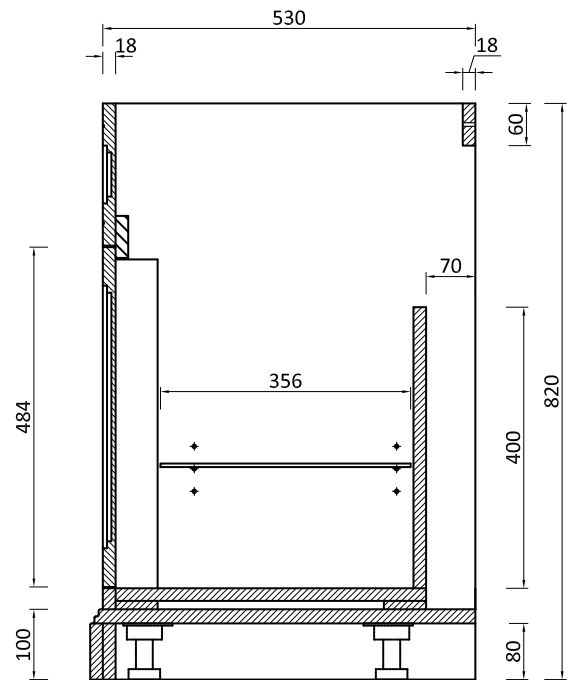
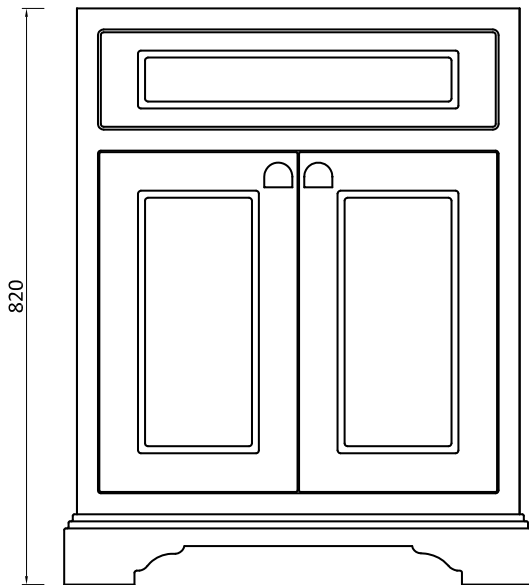
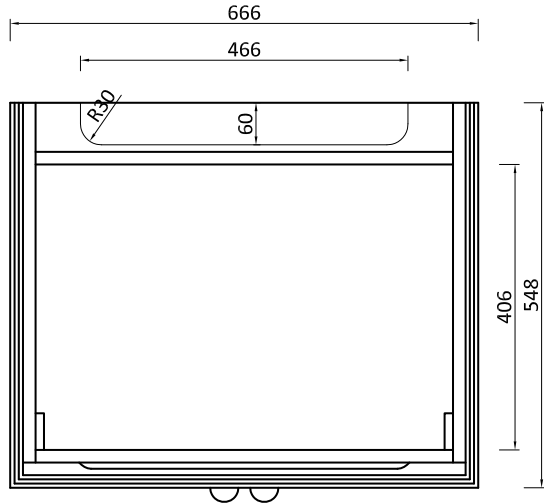
| | |
|-----------------------|----------------|
| CATEGORY | Furniture |
| WARRANTY DETAILS | 10 Years |
| COLOUR | Matt Green |
| FINISH APPLICATION | Lacquered |
| PRIMARY MATERIAL | MDF |
| INSTALL TYPE | Floor Standing |
| PRODUCT WIDTH MM | 666 |
| PRODUCT HEIGHT MM | 820 |
| PRODUCT DEPTH MM | 548 |
| PRODUCT NET WEIGHT KG | 31.2 |
| STANDARDS | EN14749:2016 |

| | |
|-------------------------|------------------|
| COLOUR CODE / REFERENCE | NCS S7020 - B70G |
| DRAWER BOX | MDF |
| DRAWER RUNNERS | DTC HINGE |
| DRAWER EXTENSION | FULL EXTENSION |
| DRAWER ADJUSTMENT | 2 way adjustment |
| WALL HANGERS | Yes |
| ADJUSTABLE FEET | Yes |
| DRAWER CAPACITY | 15kgs |
| DRAWER OPERATION | SOFT CLOSE |

TECHNICAL DIMENSIONS

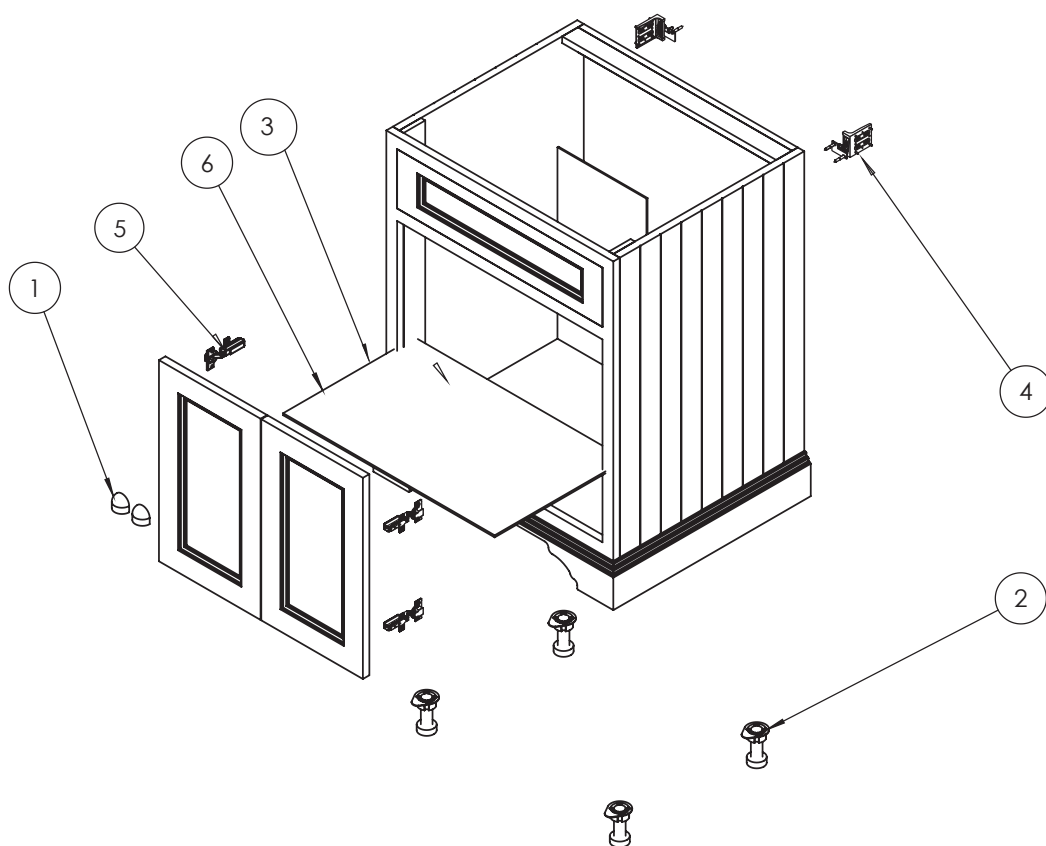
Dimensions in mm unless otherwise specified.

Tolerances (per material type) apply.



SPARES LIST

Only the parts labelled are available as spares.



| NUMBER | PART CODE | DESCRIPTION |
|--------|-----------|--|
| 1 | SP653 | 1x handle 2x screws 2x washers Burling |
| 2 | SP669 | Burl. Spare adjustable leg for floor uni |
| 3 | SP762 | Burlington rectangular glass shelf for F |
| 4 | SP945 | Burlington spare screws & fixings for fu |
| 5 | SP949 | Burlington spare furniture hinges (Pair) |
| 6 | SPFF8GS | Burl. Spare glass shelf for FF8,FC1,FC2 |