

PRODUCT DATA SHEET



PRODUCT CODE
T31 BNKL

RANGE
Victorian

DESCRIPTION
Low Level Kit Brushed Nickel



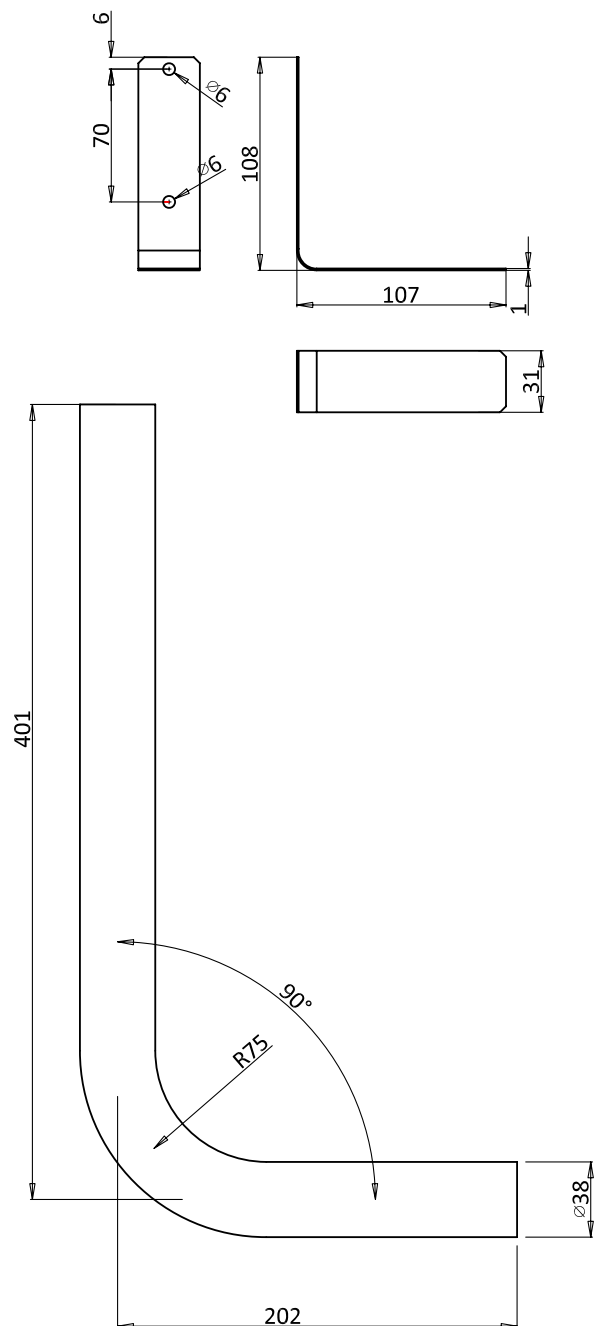
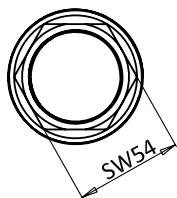
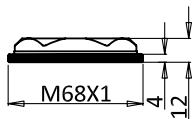
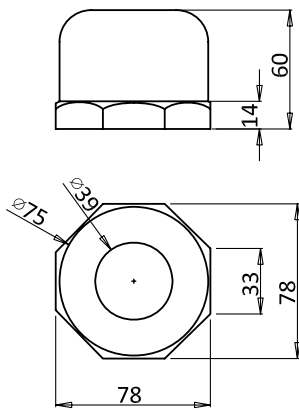
CATEGORY	Sanitaryware
WARRANTY DETAILS	2 Years
COLOUR	Brushed Nickel
FINISH APPLICATION	PVD
PRIMARY MATERIAL	Brass
INSTALL TYPE	Toilet Mounted
PRODUCT WIDTH MM	38
PRODUCT HEIGHT MM	420
PRODUCT DEPTH MM	221
PRODUCT NET WEIGHT KG	1.19

FIXINGS INCLUDED	Yes
------------------	-----

TECHNICAL DIMENSIONS

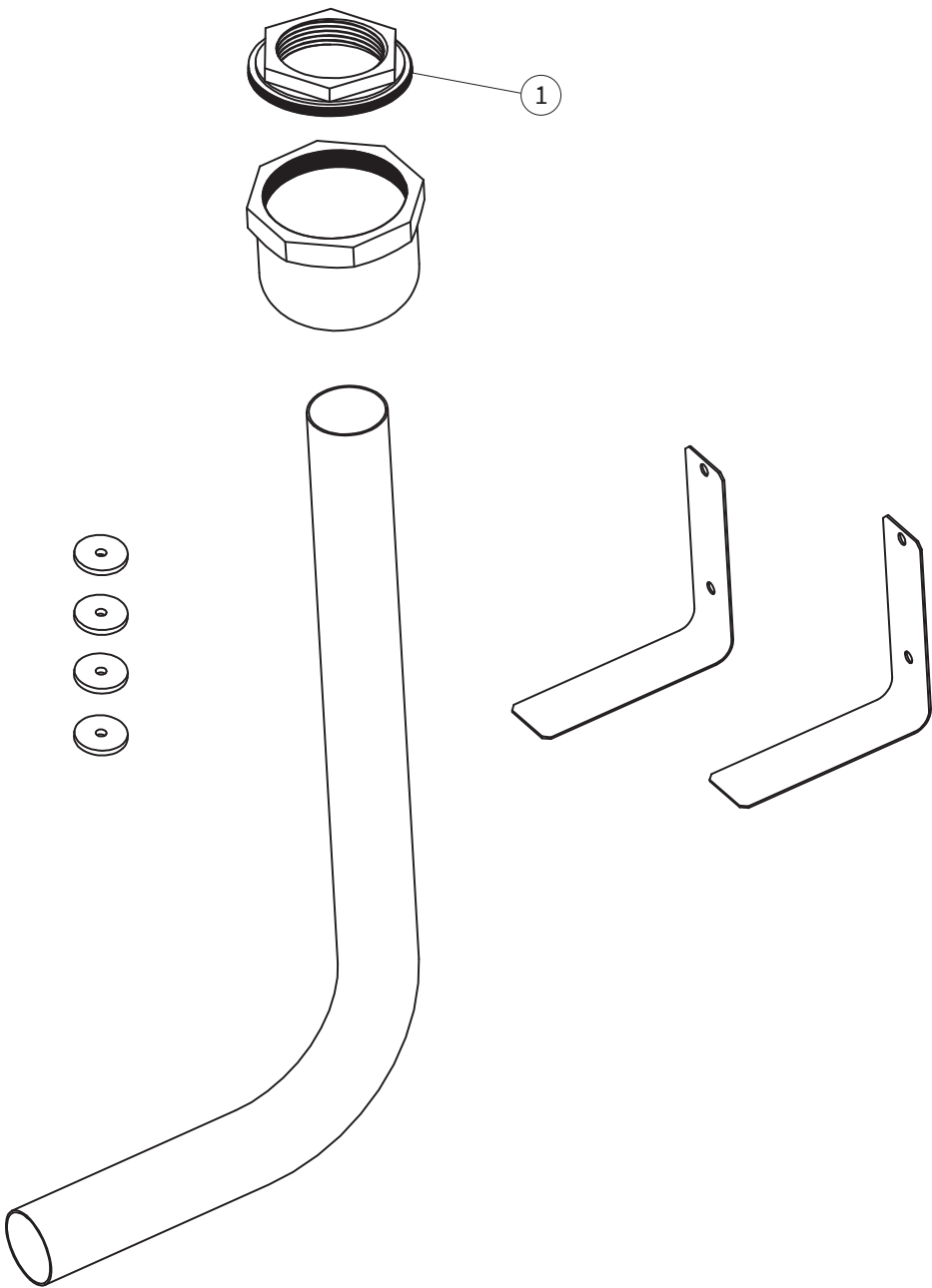
Dimensions in mm unless otherwise specified.

Tolerances (per material type) apply.



SPARES LIST

Only the parts labelled are available as spares.



NUMBER	PART CODE	DESCRIPTION
1	SP1353	Brass fixing nut