

PRODUCT DATA SHEET

Burlington®

PRODUCT CODE

W4 BNKL

RANGE

Victorian

DESCRIPTION

Exposed Bath Overflow Plug & Chain
Brushed Nickel



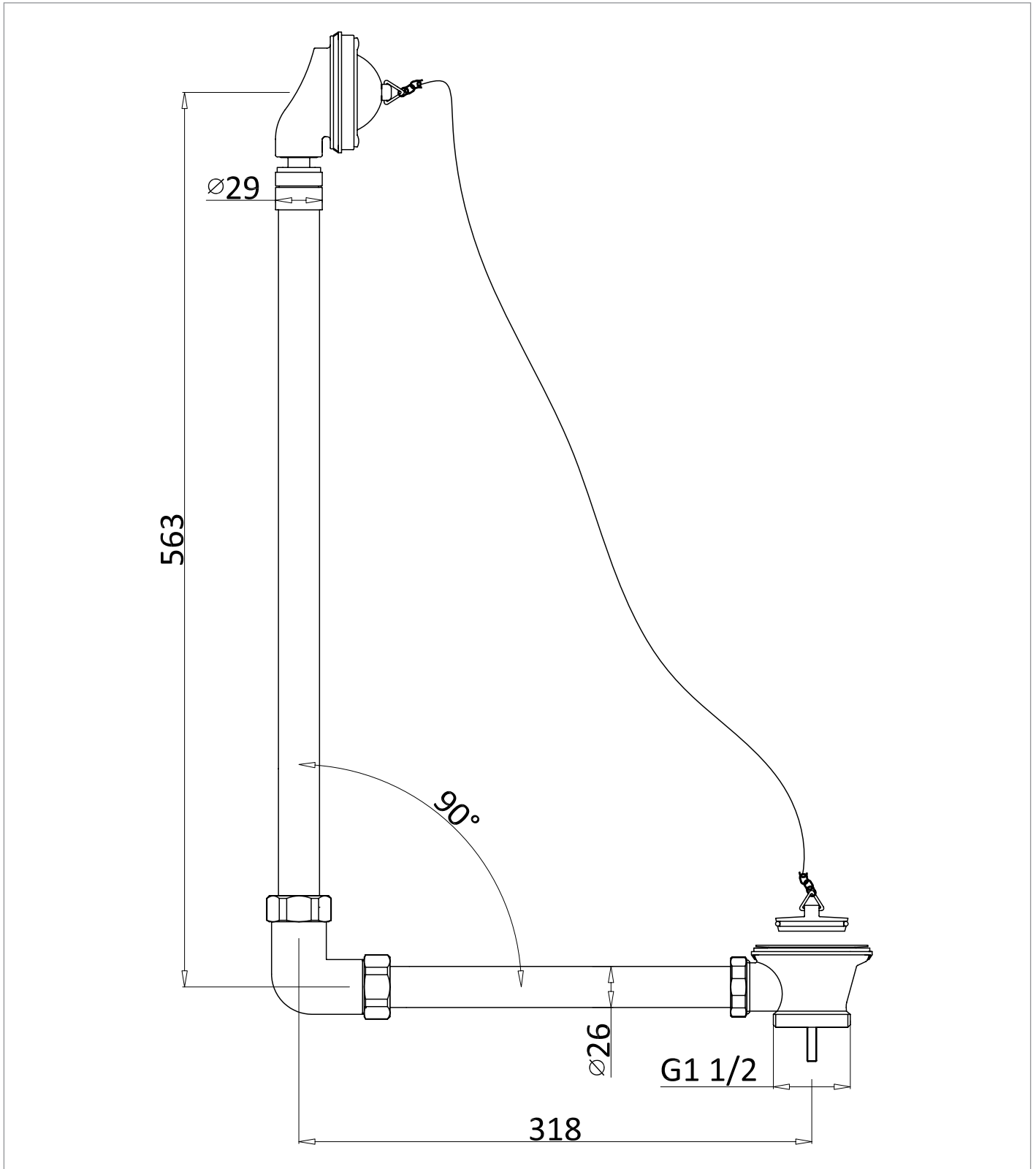
CATEGORY	Brassware
WARRANTY DETAILS	15 Years
COLOUR	Brushed Nickel
FINISH APPLICATION	PVD
PRIMARY MATERIAL	Brass
INSTALL TYPE	Bath Mounted
PRODUCT WIDTH MM	72
PRODUCT HEIGHT MM	563
PRODUCT DEPTH MM	318
PRODUCT NET WEIGHT KG	1.59

PRESSURE (BAR)	0.2	0.5	1	2	3	4	5
PRIMARY FLOWRATE							
HANDSET FLOWRATE							
MASSAGE FLOW RATE							
AIR FLOW RATE							
WIRE FLOW RATE							
WATERFALL FLOW RATE							
MIST FLOW RATE							
HANDSPRAY FLOW RATE							

TECHNICAL DIMENSIONS

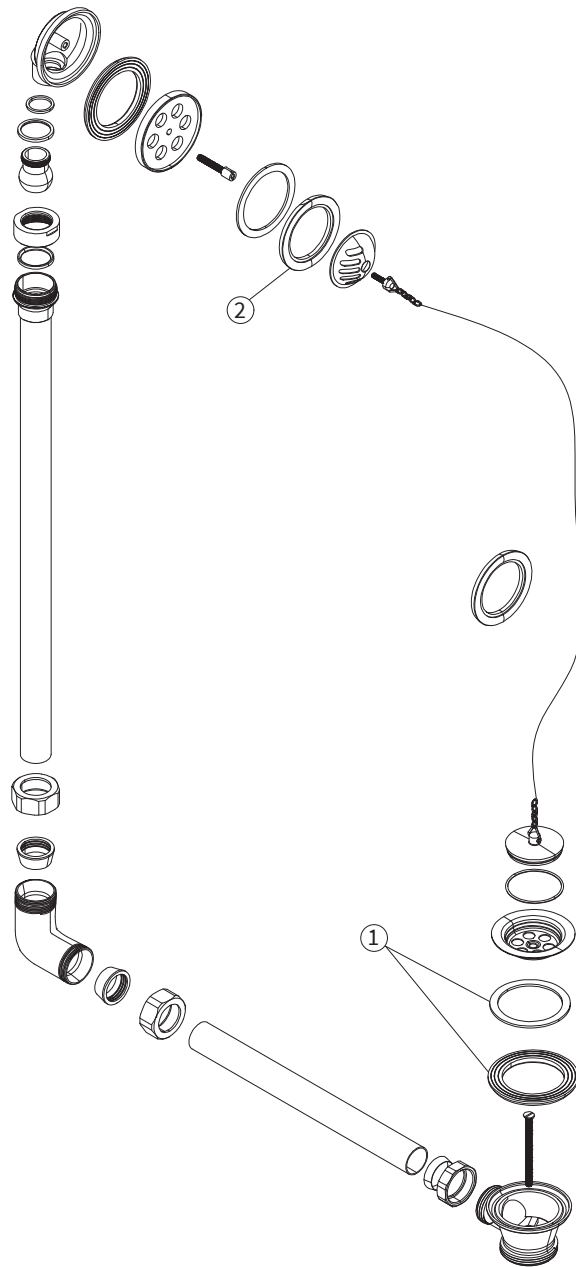
Dimensions in mm unless otherwise specified.

Tolerances (per material type) apply.



SPARES LIST

Only the parts labelled are available as spares.



NUMBER	PART CODE	DESCRIPTION
1	SP377	GASKET & RUBBER WASHER for waste housing
2	SP108	Ceramic ring for all finishes products of Burlington exposed valve