

# PRODUCT DATA SHEET



## PRODUCT CODE

A9CHR

## RANGE

Mirror

## DESCRIPTION

A9 Arched Chrome Framed Mirror 500 x 700mm

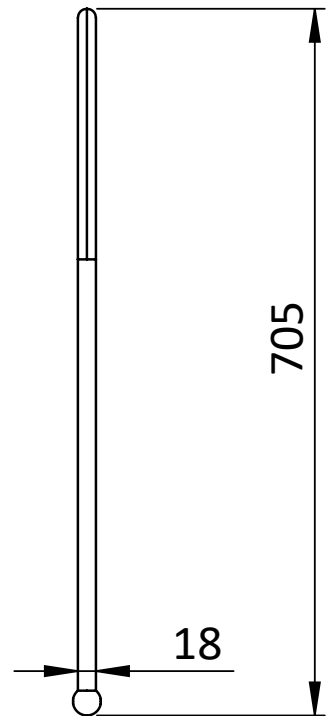
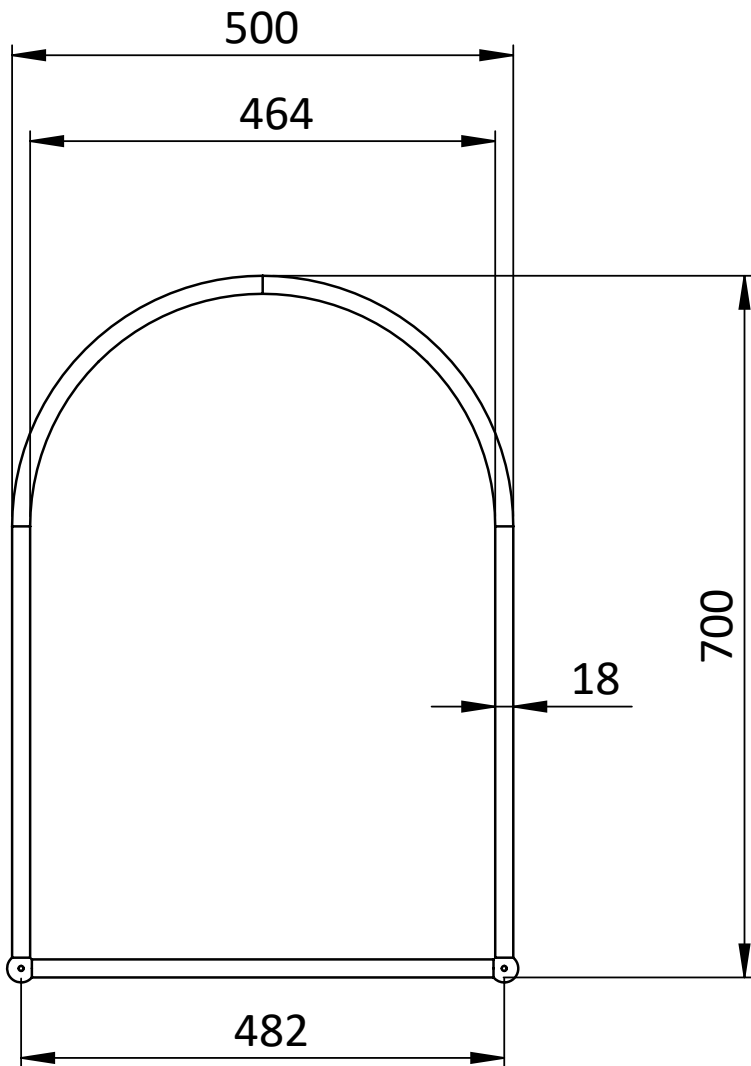


CATEGORY	Cabinets & Mirrors
WARRANTY DETAILS	5 Years
COLOUR	Chrome
FINISH APPLICATION	Polished
PRIMARY MATERIAL	304 Stainless Steel
SECONDARY MATERIAL	Glass
INSTALL TYPE	Wall Mounted
PRODUCT WIDTH MM	500
PRODUCT HEIGHT MM	700
PRODUCT NET WEIGHT KG	3.2

## TECHNICAL DIMENSIONS

Dimensions in mm unless otherwise specified.

Tolerances (per material type) apply.



## SPARES LIST

Only the parts labelled are available as spares.

NUMBER	PART CODE	DESCRIPTION
1	SP512	Wall Fixings for A9 & A11 Mirror (SET)
2	SP731	Rubber Stoppers of product A9, A11, A38