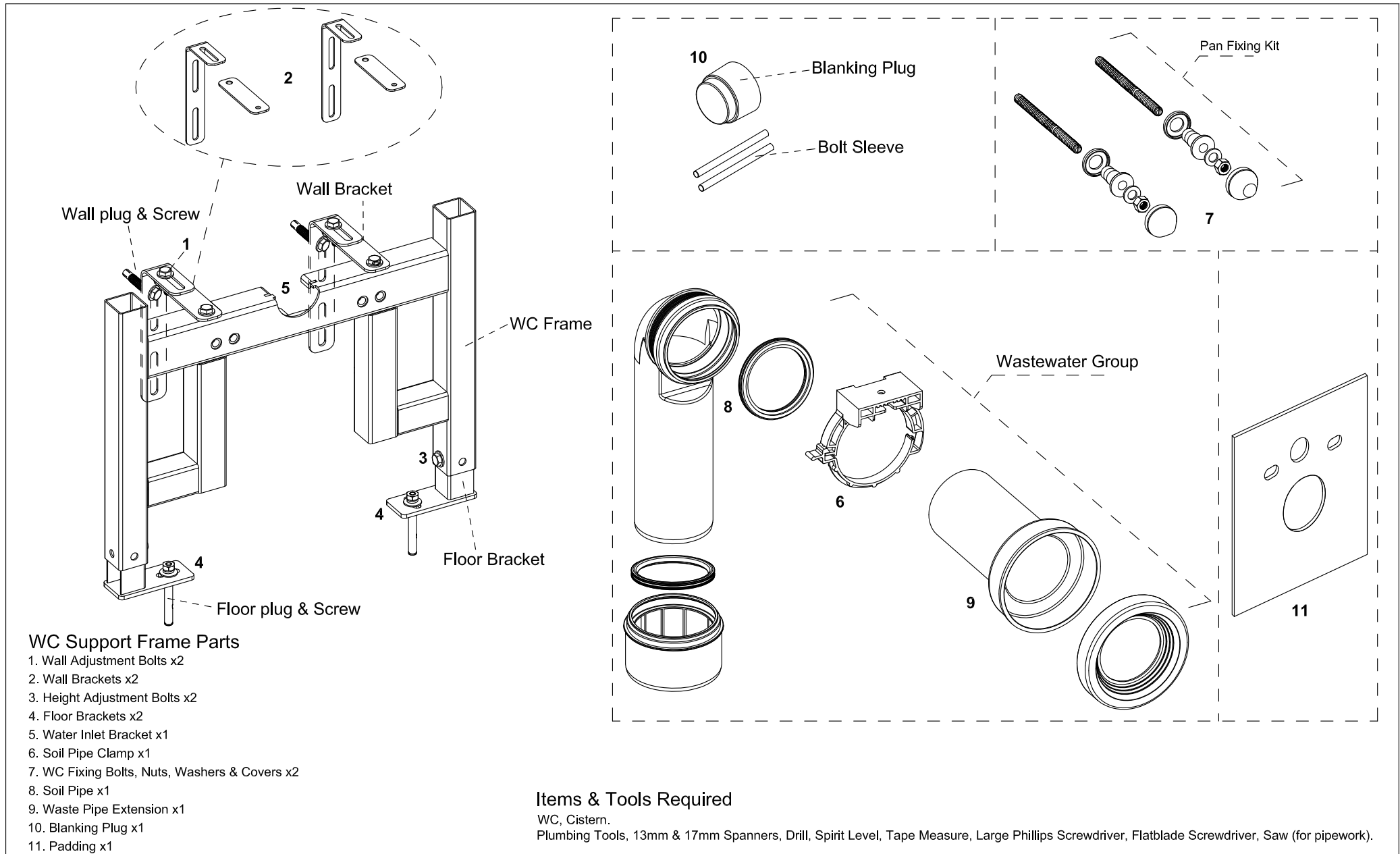


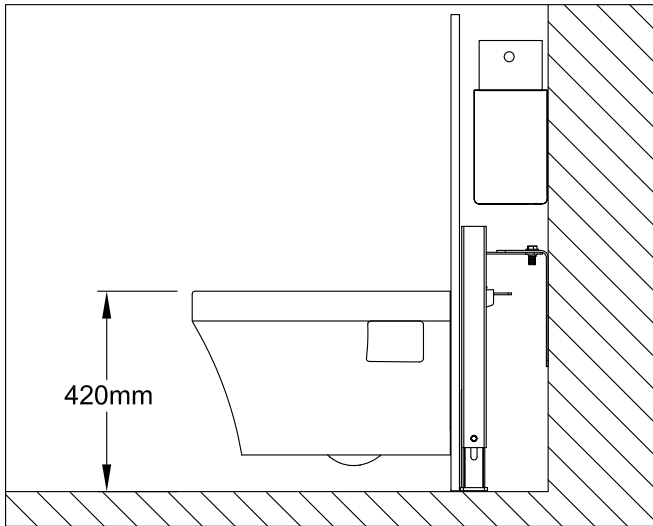
Important:

- Please read these instructions carefully before commencing installation and keep in a safe place for future reference.
- Any plumbing work should be carried out by a qualified professional plumber.
- Check the pack contents to ensure you have all the items required before starting. Ensure you have any additional parts required (WC, cistern etc).
- You must ensure there is access to the connections behind any partition walls.

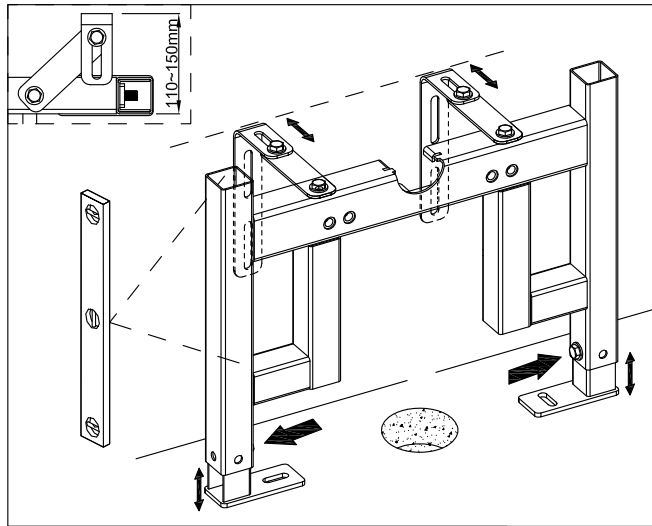
Safety Advice & Warnings:

- If any of the components are damaged or missing, do not install and contact manufacturer immediately.
- The manufacturer shall have no responsibility for failures resulting from improper installation.
- Check for hidden pipe work and/or cables before drilling or cutting into walls, floors or ceilings.
- Use wall/floor fixings that are suitable for your wall/floor types and are strong enough for the purpose.
- DO NOT attempt to lift heavy items by yourself - LIFT WITH CARE. Keep children and pets away from the installation area.
- Wear safety glasses and gloves when installing.
- Keep your working area clean and tidy.
- Always follow the safety instructions provided with tools. DO NOT carry sharp tools in your pocket.
- This product should not be discarded with normal household waste, but taken to your local collection centre for recycling.
- Please correctly dispose of packaging properly after installation, recycle where possible.

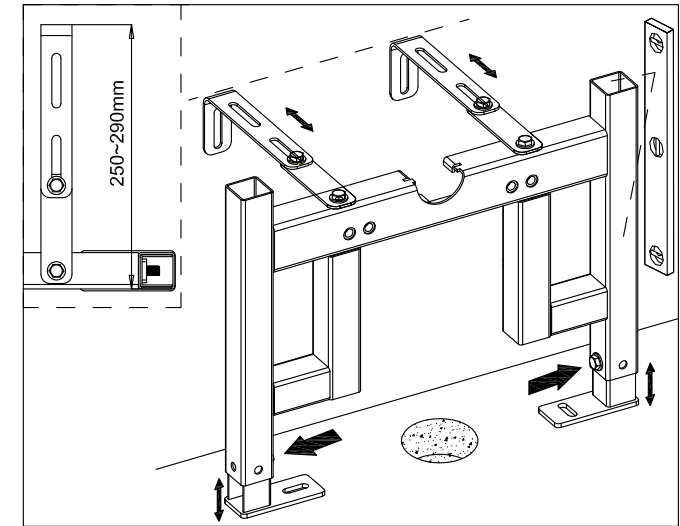




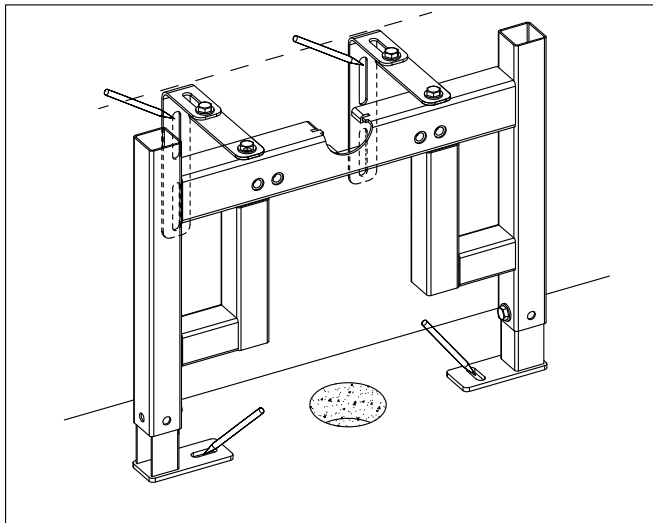
1: Plan the position of the WC. The recommended WC height is 420mm. The maximum height will depend on the WC that is used and the end user requirements. The distance from the wall may depend on the space requirements for a cistern etc.



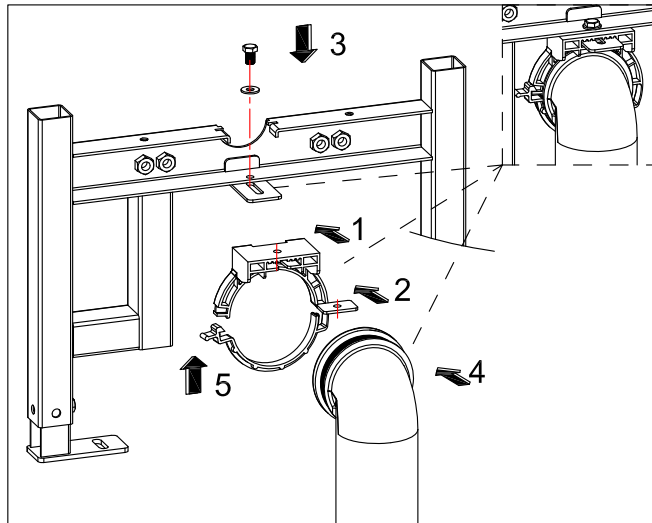
2: Place the frame against the wall in the required position. Set the required distance from the wall. Loosen the wall adjustment bolts, set to the required distance, check if the frame is vertical & horizontal and retighten the bolts.



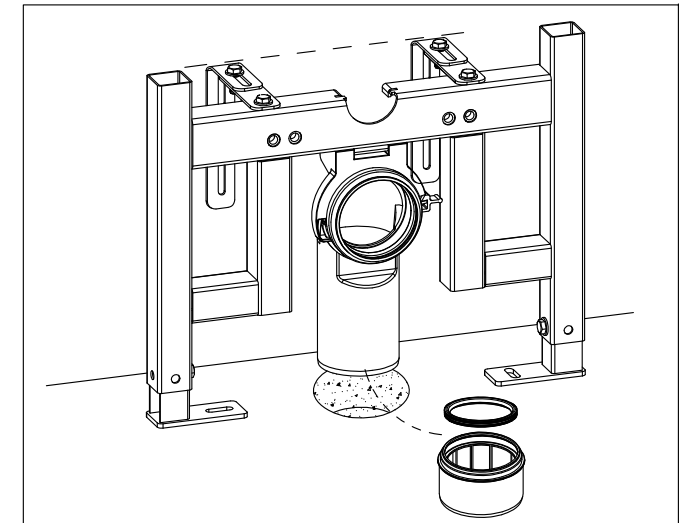
3: If the desired adjustment range is within 250mm to 290mm, please refer to the above diagram for the installation.



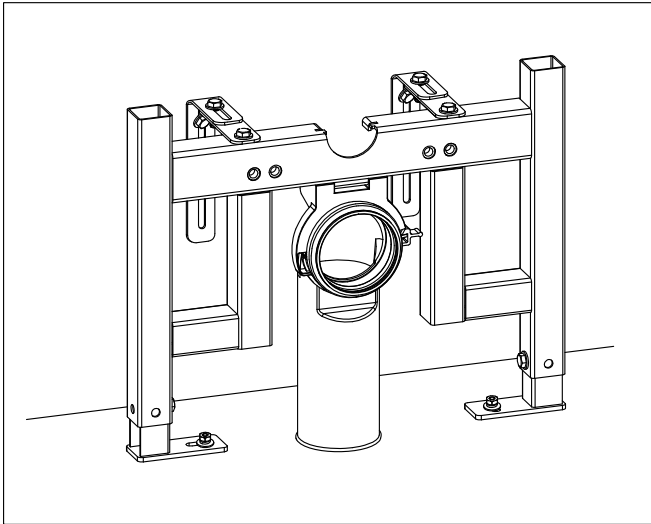
4: Mark the fixing positions on the wall and floor. Remove the frame and drill suitable holes for the fixings.



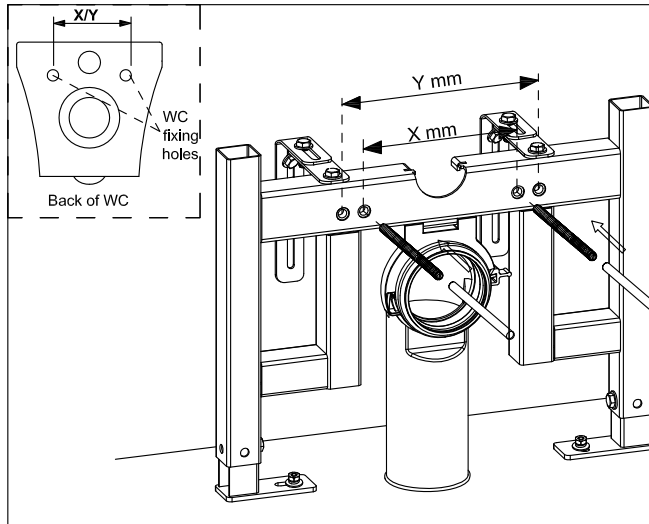
5: Install the soil pipe clamp & soil pipe to the WC frame and fix with the screw.



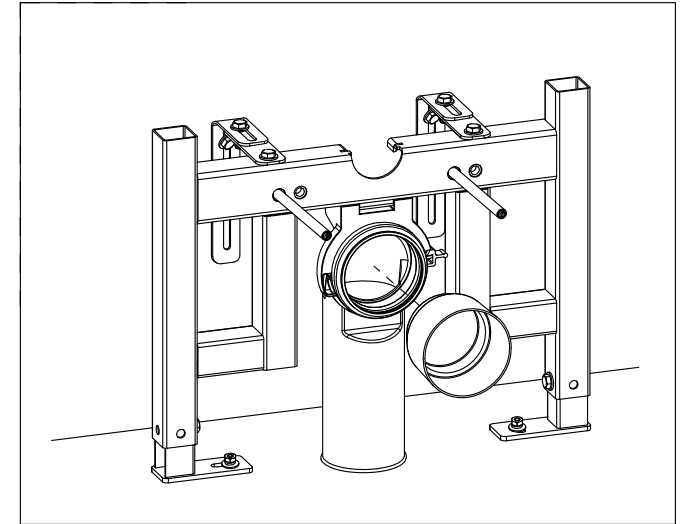
6: Connect the main soil pipe to the soil pipe. Any plumbing work should be carried out by a qualified professional plumber.



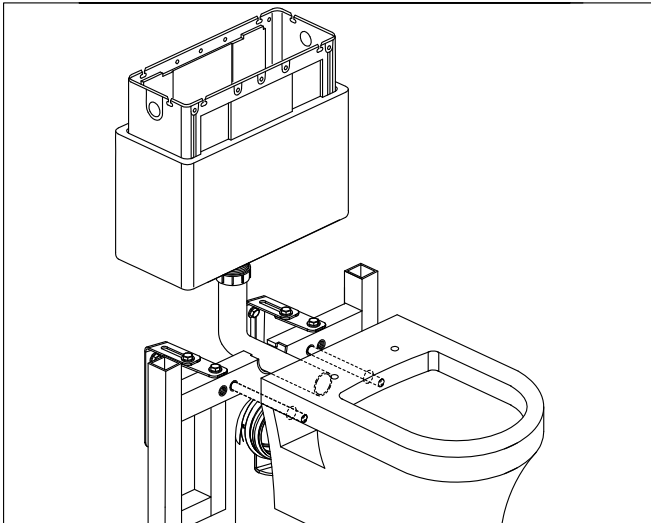
7: Attach the frame to the wall and floor using suitable fixings.
Check the frame is level in all directions.



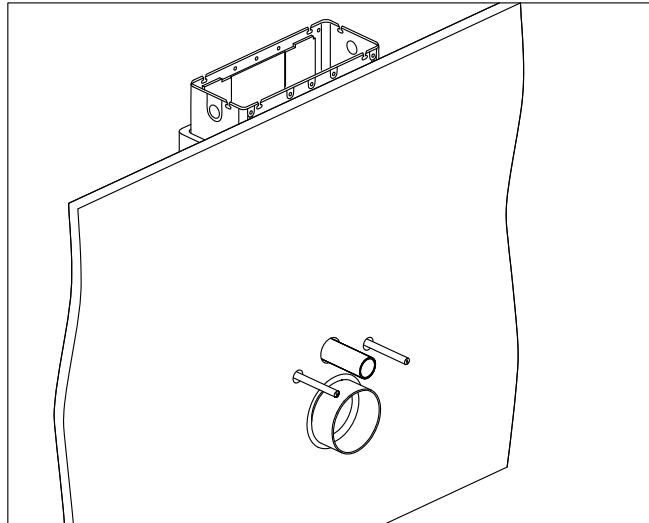
8: Measure the distance 'X' between the centres of the WC fixing holes.
Insert the WC fixing bolts into the holes that match the WC fixing holes.
The fixing bolts can be adjusted (in or out) using a large flatblade screwdriver to the length required - avoid them projecting too much.
Insert the bolt sleeve into the bolt.



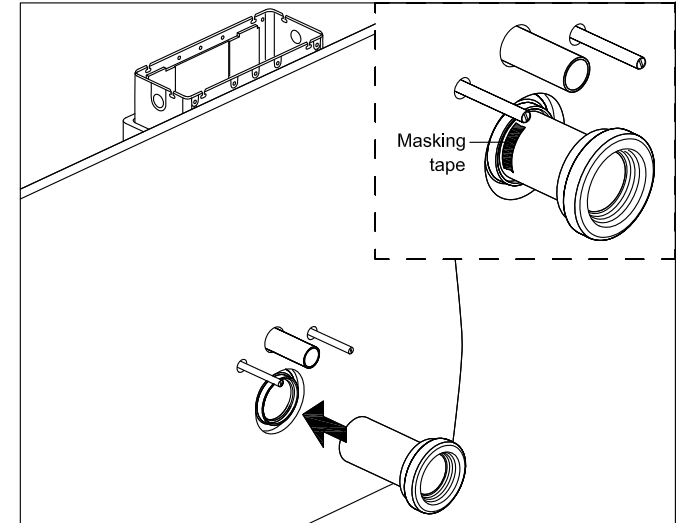
9: Push fit the blanking plug into the soil pipe. Remove and refit as required (this will prevent odours escaping and stop debris falling into the main soil pipe during installation).
Secure the pipework in the void.



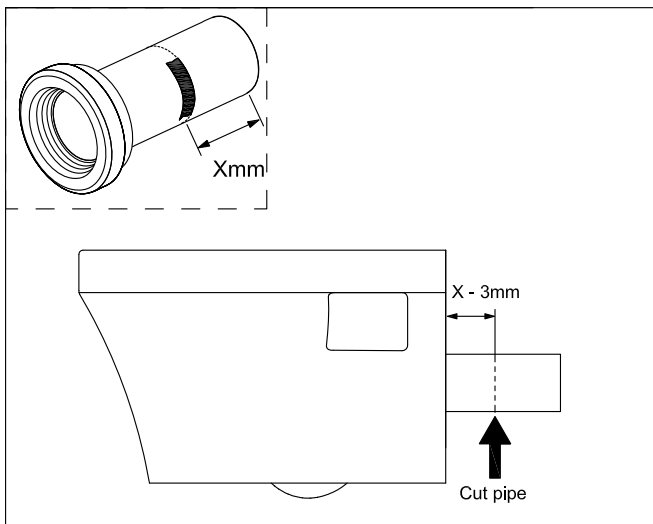
10: Place the cistern in position. Note: You may need to cut the flush pipe to fit the height required and for projection into the pan socket (remove any burrs). Ensuring the cistern is level, install it onto the wall by following the cistern instruction.



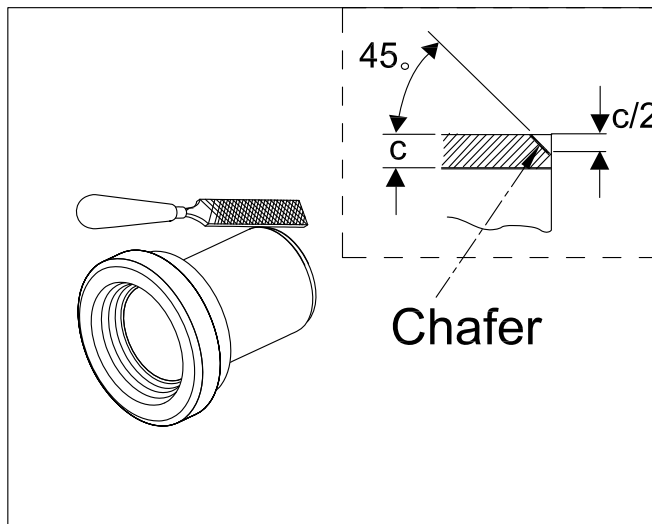
11: Build the partition wall, making the holes for the bolts and pipes.
If required, tile the surface or apply the finish now.



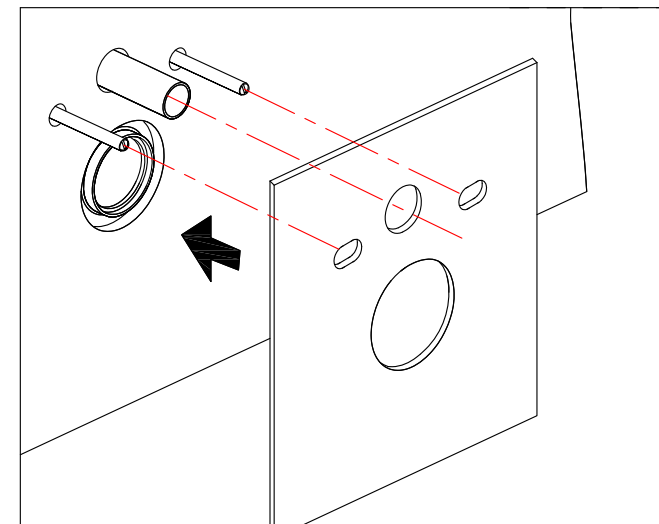
12: Take off the blanking plug, push fit the waste pipe extension fully into the soil pipe. Use masking tape to mark a line on the waste pipe extension flush with the surface of the partition wall. Remove the waste pipe extension from soil pipe.



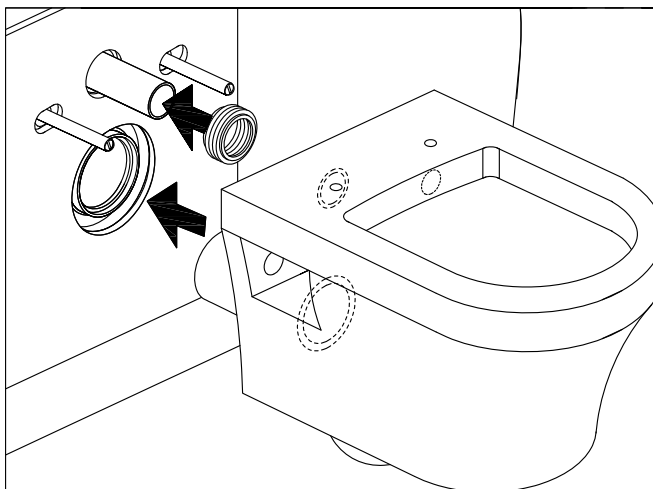
13: Fit the WC seat at this stage if it is not a 'Top Fix' design, fitting after the pan is fitted is very difficult.
Measure the marked length of waste pipe extension (Xmm).
This measurement MINUS 3mm is the length of waste pipe extension that is needed to extend from the back of the WC.



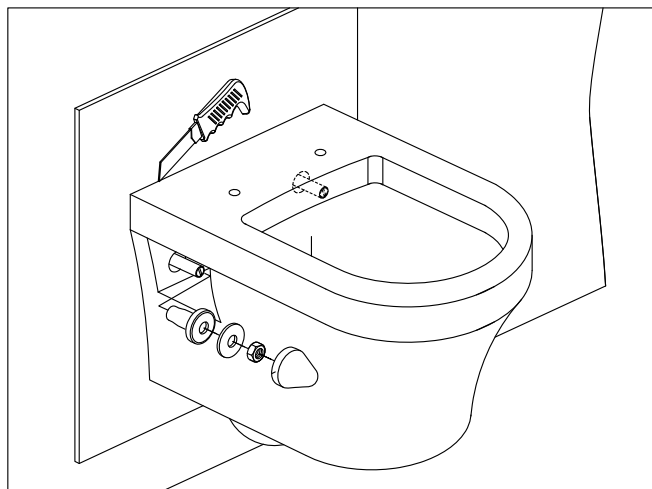
14: Cut to length and remove any burrs.



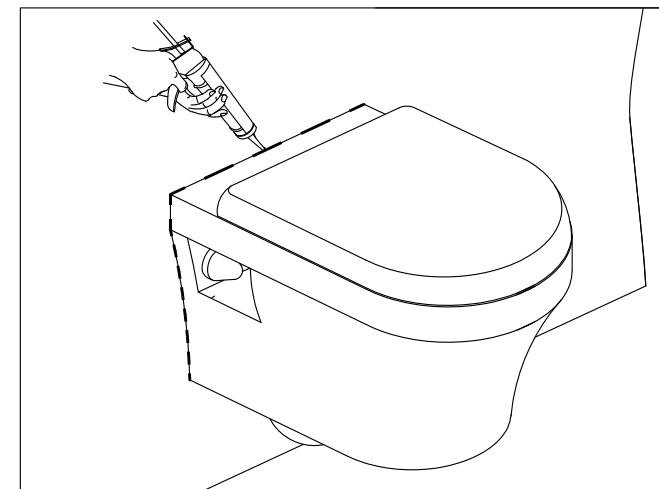
15: Slide the padding onto the bolts and outlet pipe.



16: Lubricate the outer rings of the flush pipe rubber seal (supplied with cistern) and push onto the end of the flush pipe.
Push fit the waste pipe extension fully into the pan.
Carefully position the WC onto the fixing bolts, lining up the inlet and waste connections at the same time.
Note: You may need to reduce the length of the flush pipe (remove any burrs).



17: On each side of the WC, place the plastic and metal washers onto the bolts, secure with the nuts and push fit the covers.
Note: The fixing bolts can be lengthened or shortened using a large flatblade screwdriver.
Slice the padding along the back trace of pan.



18: Finish the installation by water testing the inlet and outlet connections and isolator in the void. Note: You must ensure there is access to the connections in the void.
Seal the gaps between the wall & pan with silicone.
The installation is now completed by fitting the seat (if not fitted) and the access lid to the void.