

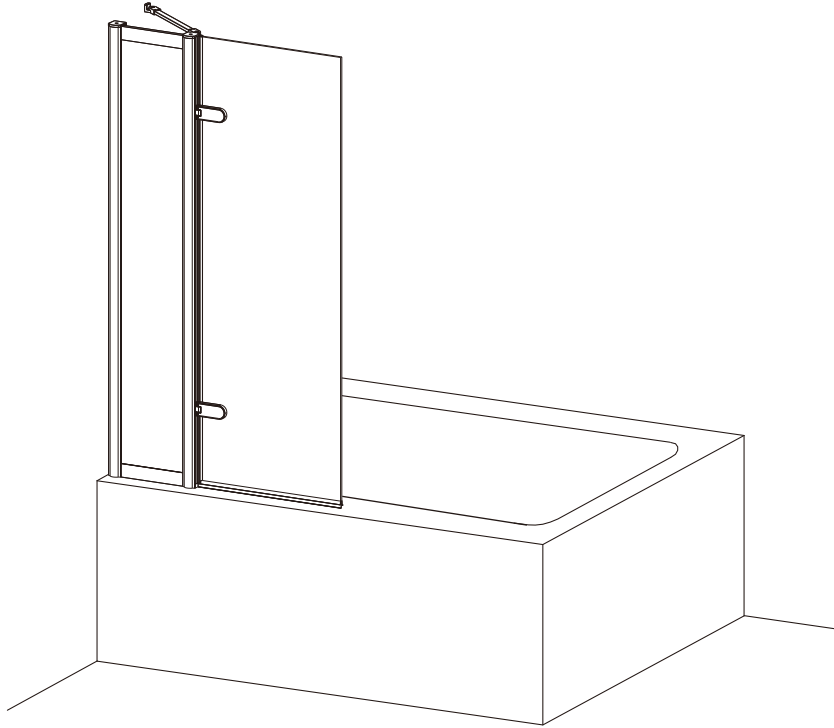
# CLASSIQUE

Hinged Inline Bath Screen

*Burlington®*

## PRODUCT CODES:

CQBSILC0850  
CQBSILGC0850  
CQBSILLC0850



CQ1909PRFNx



CQ1850PRFNx

Optional profile finial (not supplied with bath screen)

## 1. Pre-Installation Checklist

### ☑ Before You Begin:

- Ensure all tiling/grouting is complete.
- Bathtub **must be level and sealed** to tiles.
- Verify door dimensions match your space (see Section 3).
- Check for hidden pipes/cables before drilling.

### ⚠ Safety Notes:

- **Two people required** for installation (glass is heavy!).
- Wear gloves when handling glass edges.

## 2. Unpacking & Components

### Confirm all parts are present:

- Please refer to all components included on following page titled “COMPONENTS”

### Missing/Damaged Parts?

Contact Bathroom Brands immediately: ☎0345 873 8840.

## 3. Step-by-Step Installation

### A. Frame Assembly

#### 1) Mark Drill Points:

- Use a spirit level to mark vertical lines for wall profiles.
- Drill 6mm holes at marked points; insert wall plugs.

#### 2) Attach Wall Profiles:

- Secure profiles with ST4x50mm screws (×4 total).
- Cover ends with profile caps if any.

### B. Door Installation

#### 3) Hang the Door:

- Following the instruction to assemble the door, ensure door is fully secured.
- Make necessary adjustment if door doesn't close smoothly.

#### 4) Apply Seals:

- Install necessary seals provided on door and side panel if any.

### C. Final Checks

#### 5) Level & Secure:

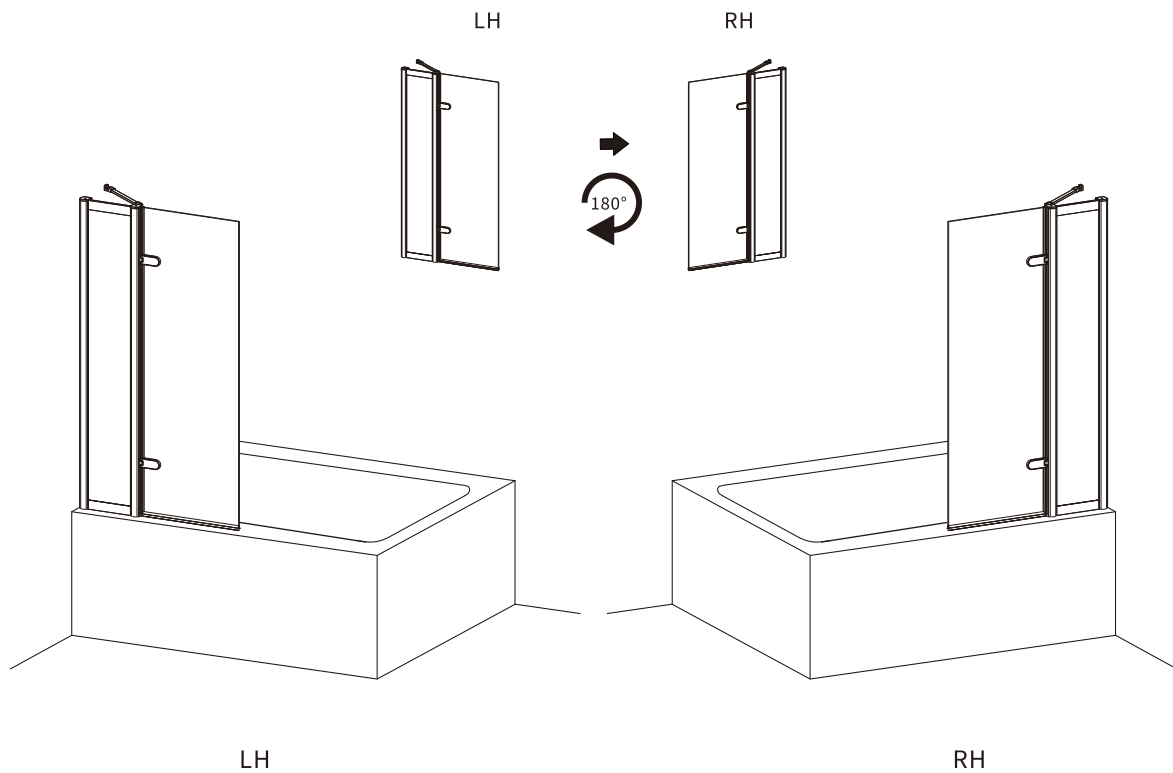
- Confirm door is level; tighten all screws.
- Let silicone cure for 24 hours before use.

## 4. Care & Maintenance

- **Cleaning:** Use only **pH-neutral soapy water** (pH 6.8–7.2).
- **Avoid:** Abrasives, solvents, or acidic cleaners.

Ensure seals are flush to prevent leaks.

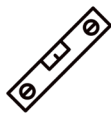
## ORIENTATION



This product is reversible for left or right hand opening.  
Please follow the diagram, and detail below for your choice of installation.

### Tools Required (not supplied):

Spirit Level



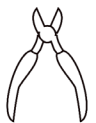
Torque Screw Driver



Pencil



Snips



Drill



6mm Drill Bit



Silicone



Measuring Tape

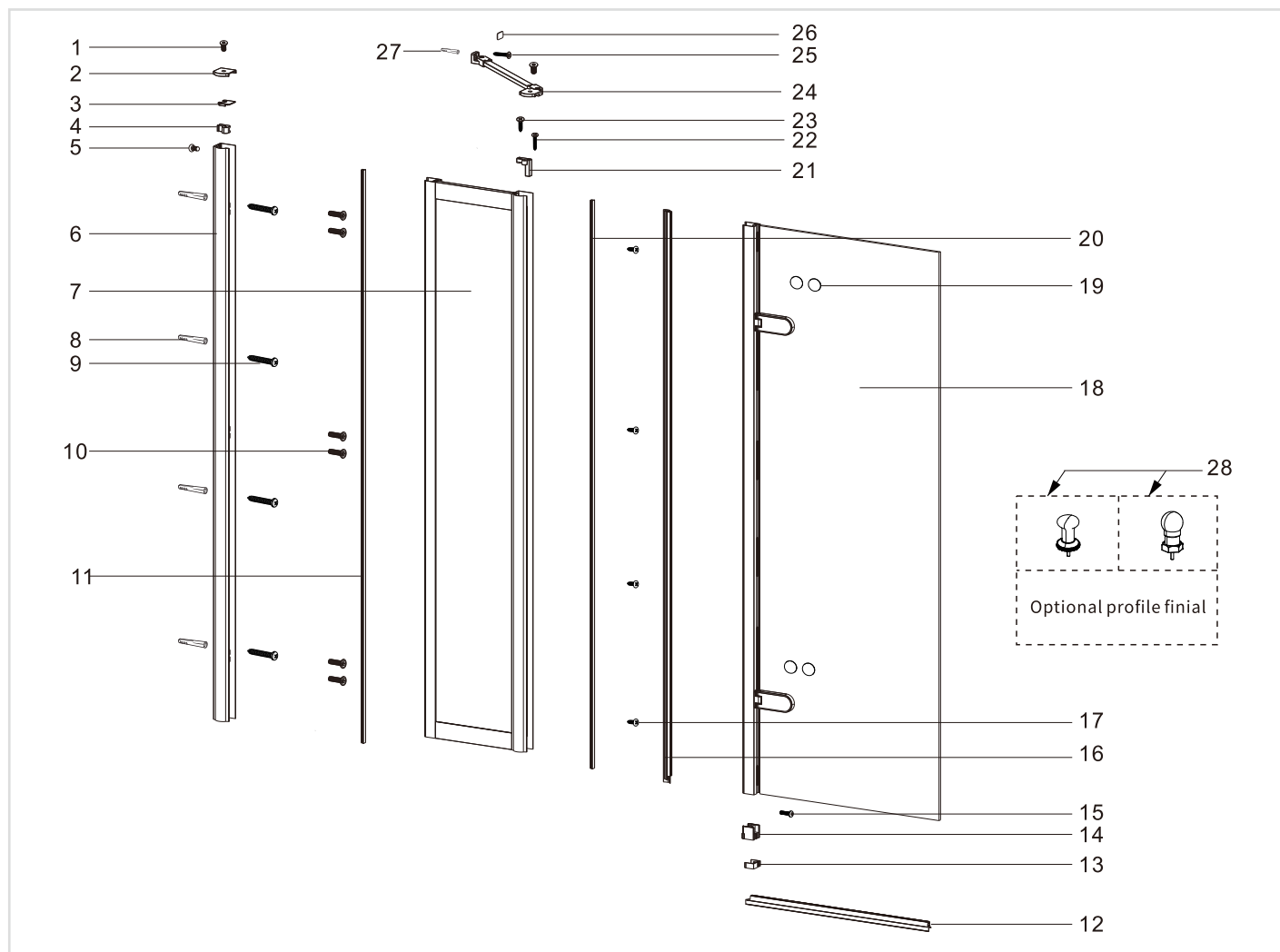


Knife



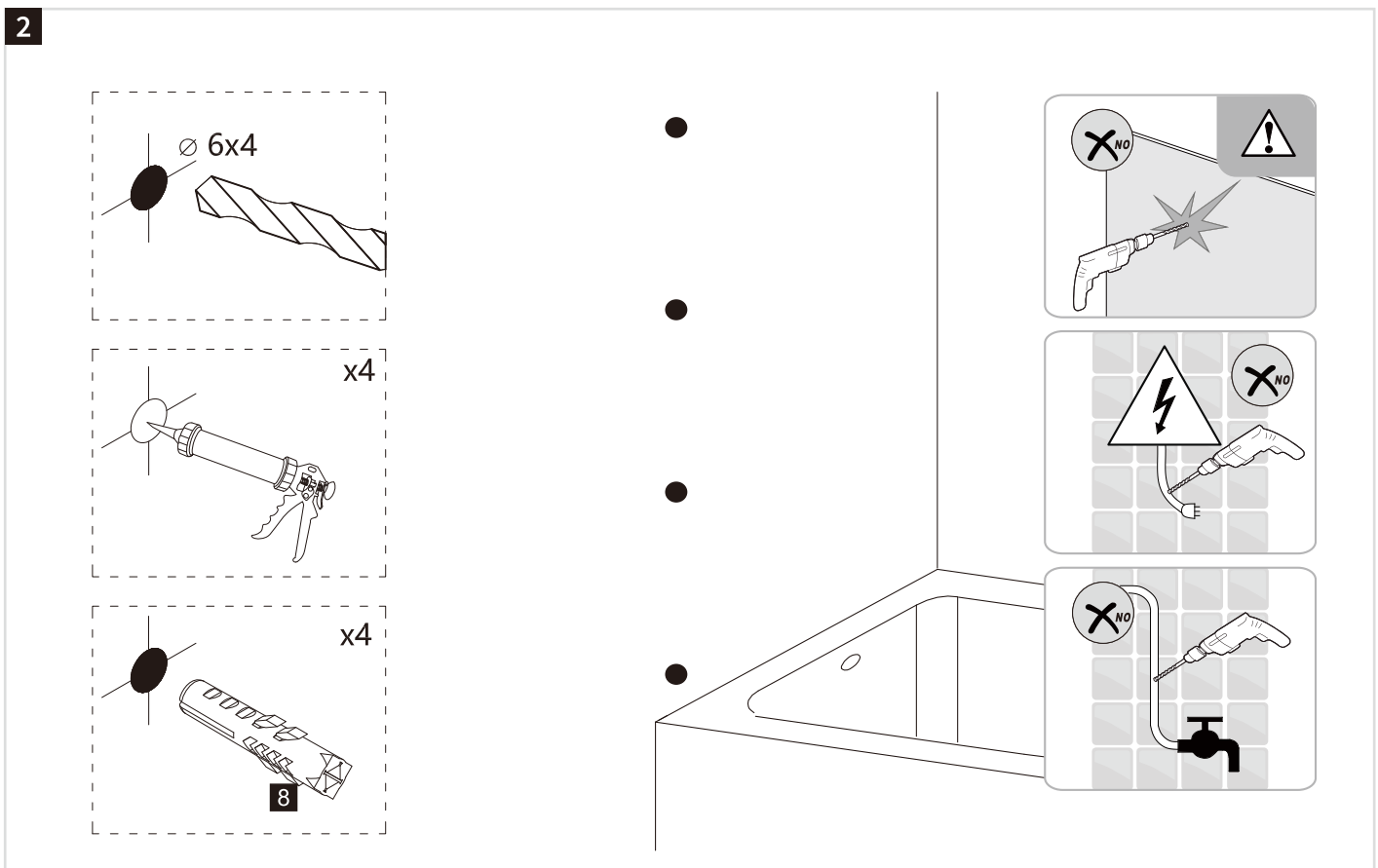
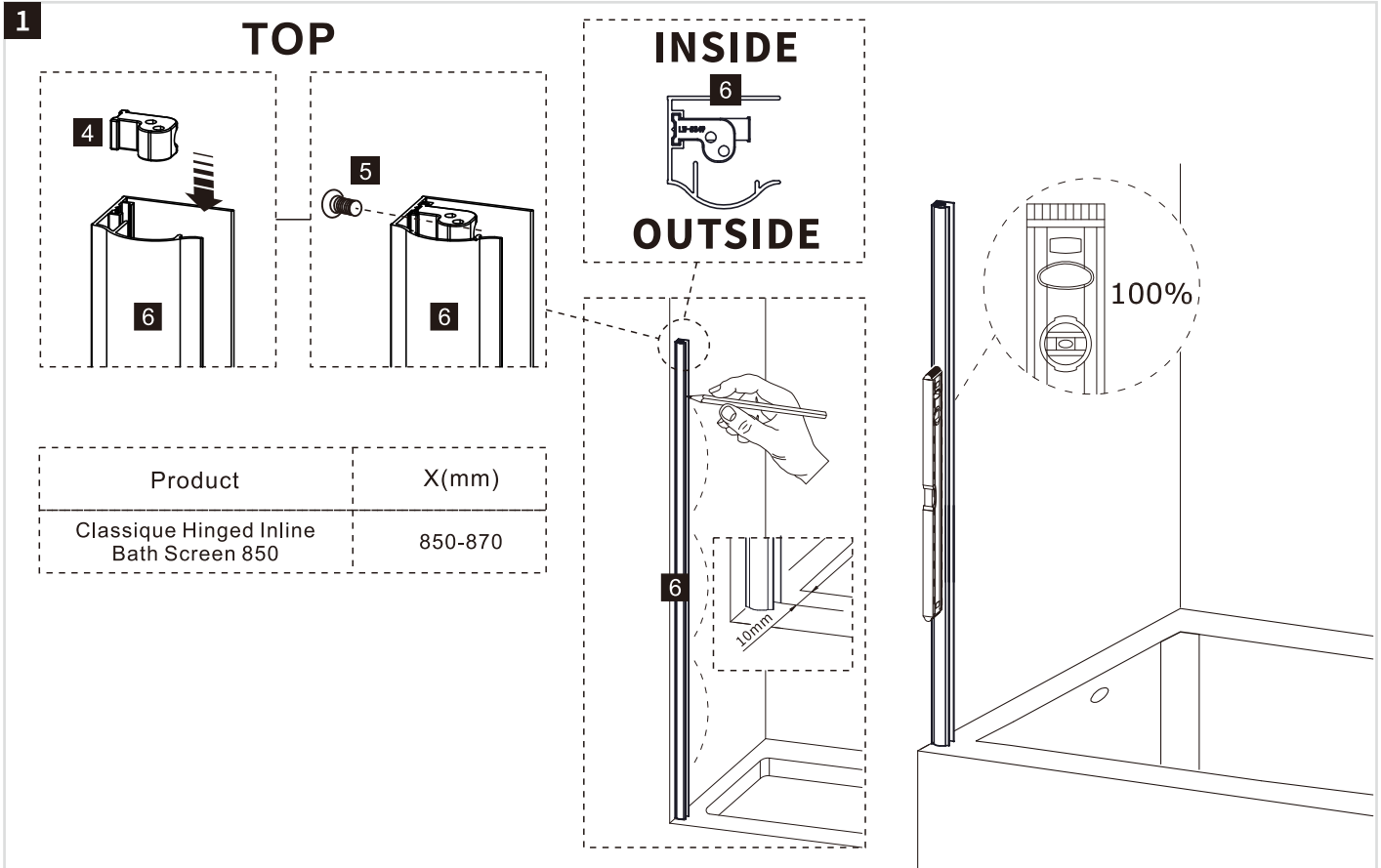
# COMPONENTS

Burlington®



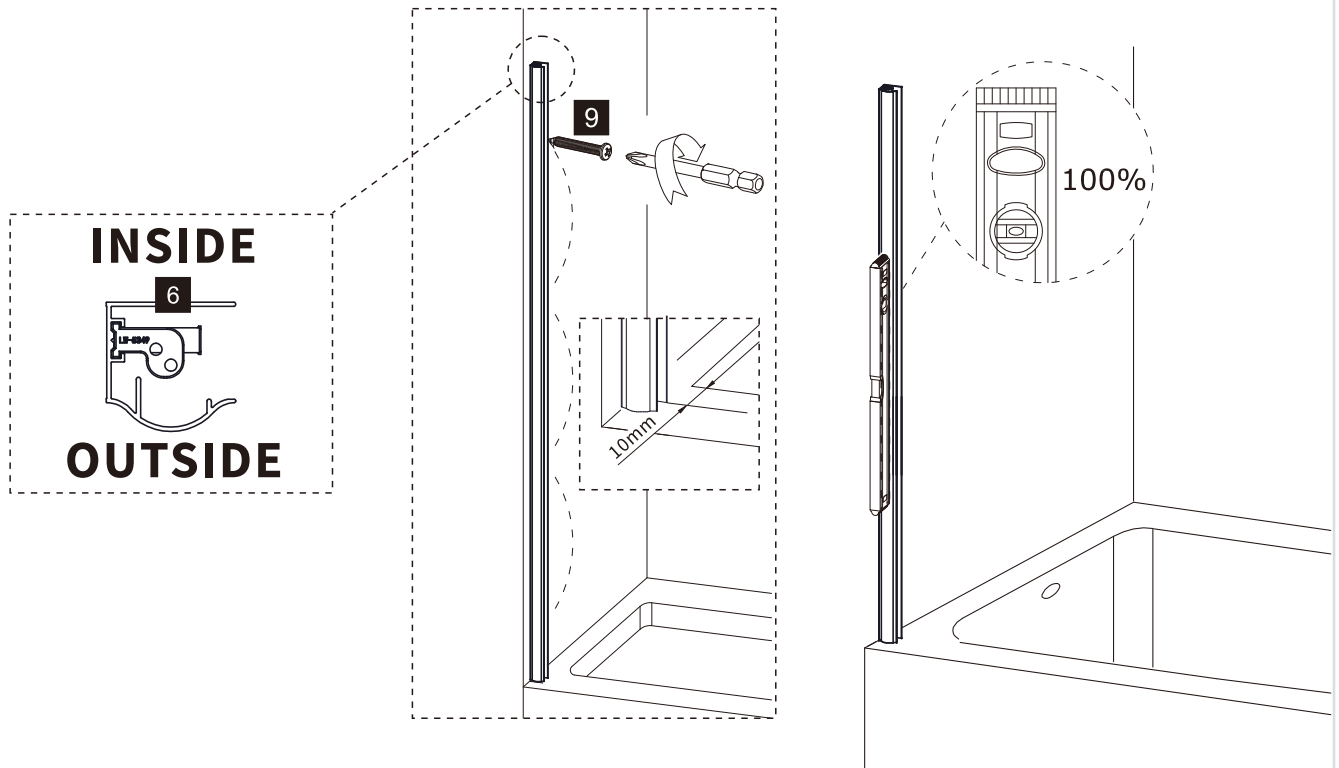
1 M5*14mm Screw x2	2 Wall Profile Cap L x1 R x1	3 Adjustment Profile Cap x1	4 Fixing Part Of Profile Cap x1
5 M4*12mm Screw x1	6 Wall Profile x1	7 Fixed Panel x1	8 Wall Plug x4
9 ST4*50mm Screw x4	10 M5*30mm Screw x6	11 Profile Cover L=1500mm x1	12 Bottom Seal x1
13 Cover Cap x1	14 Gasket x1	15 M4*10mm Screw x1	16 Vertical Door Seal x1
17 ST4*8mm Screw x4	18 Moving Door x1	19 Hinge Cap x4	20 Profile Cover L=1487mm x1
21 Fixing Part Of Bracing Bar Lx1 Rx1	22 ST4*50mm Screw x1	23 ST4X30mm Screw x1	24 Bracing Bar x1
25 ST5*40mm Screw x1	26 Screw Cap Of Bracing Bar x1	27 Wall Plug x1	28 Optional Profile Finial x2
29 Allen Key 4mm 3mm 2.5mm			

## INSTALLATION

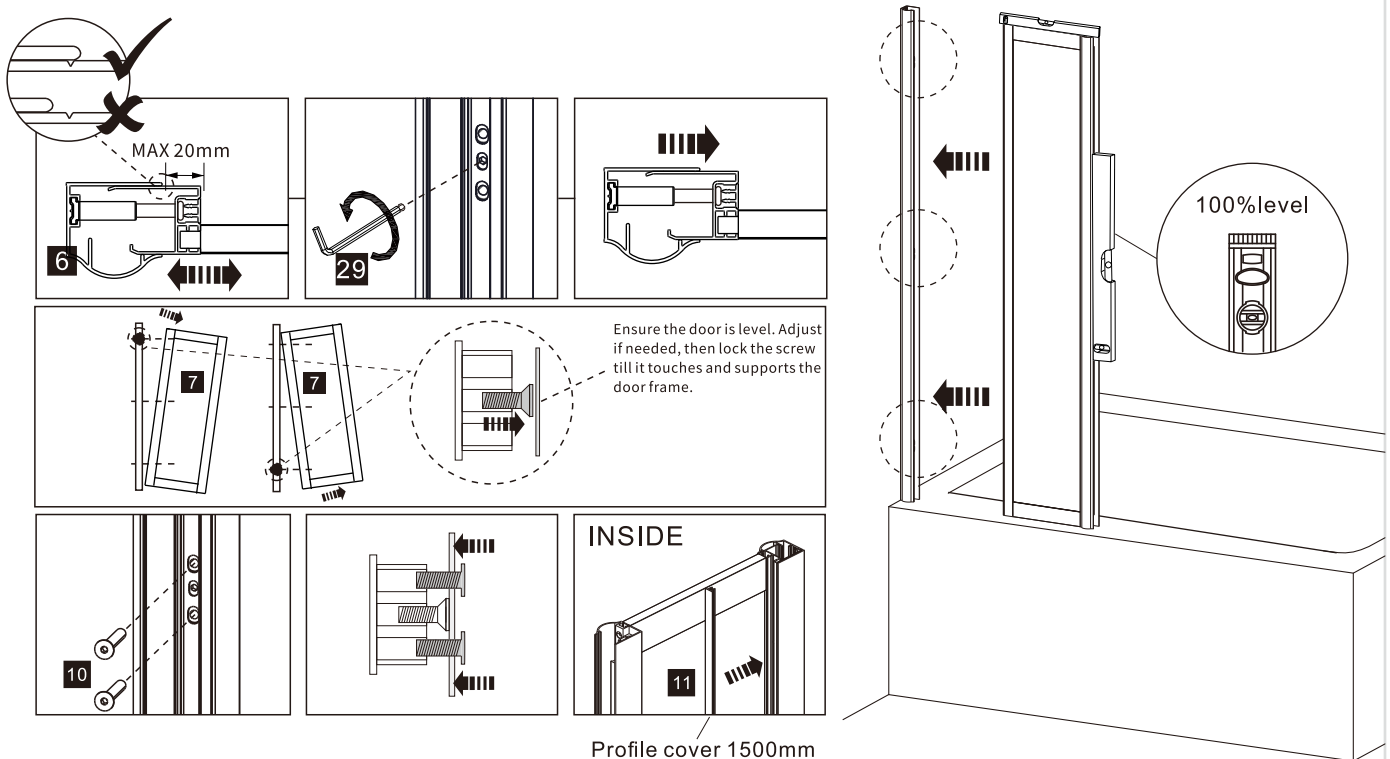


## INSTALLATION

3



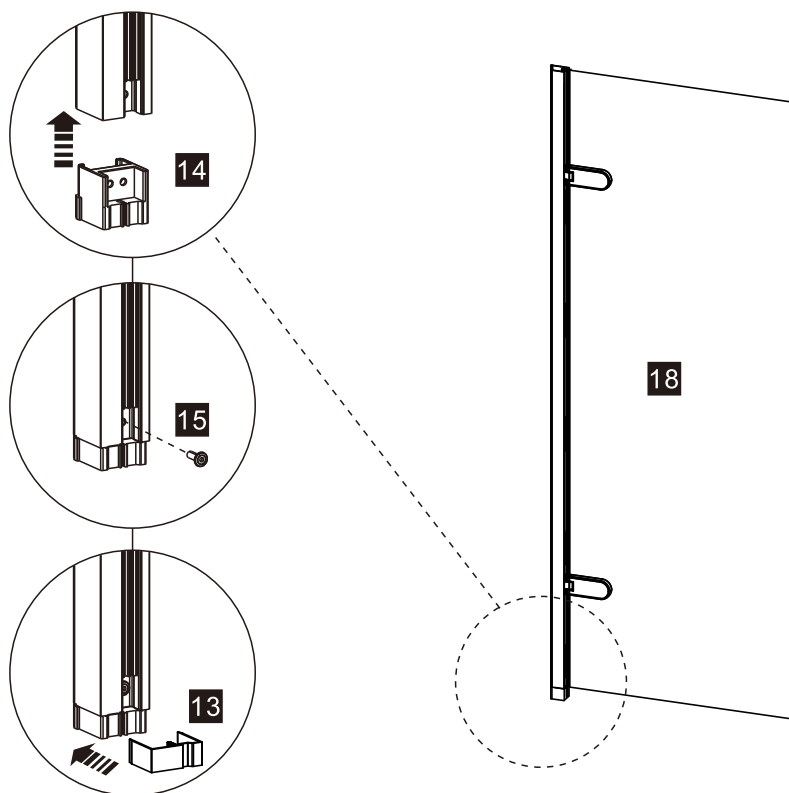
4



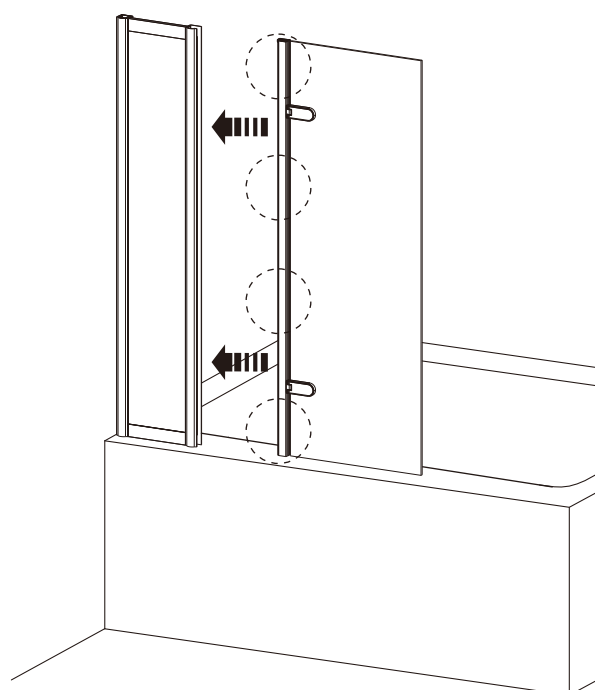
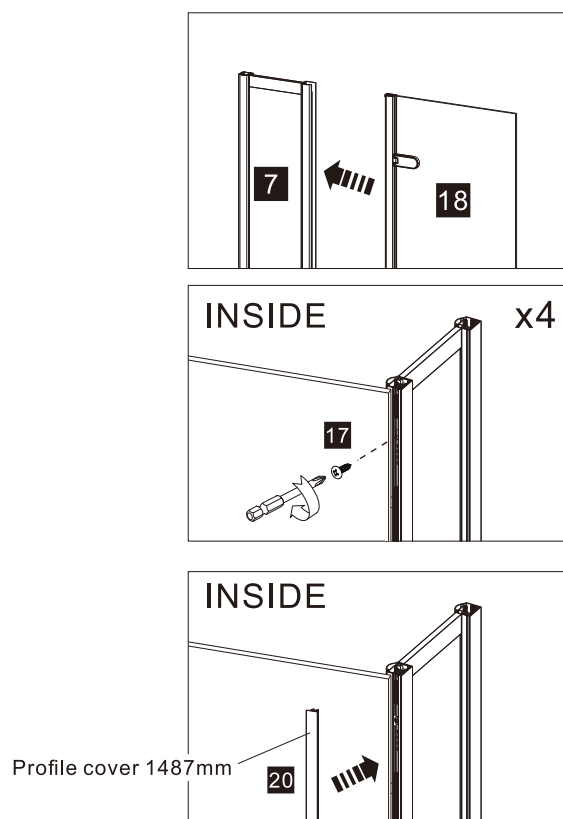
## INSTALLATION

*Burlington®*

5

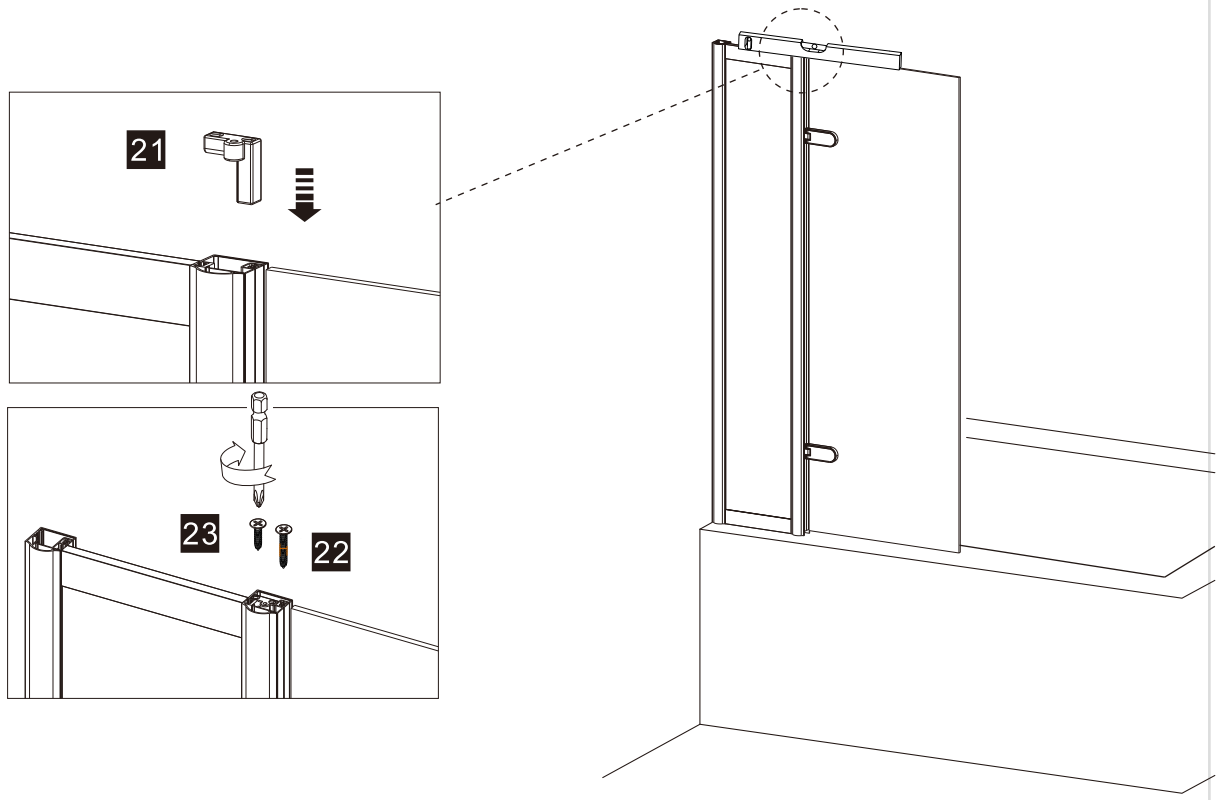


6

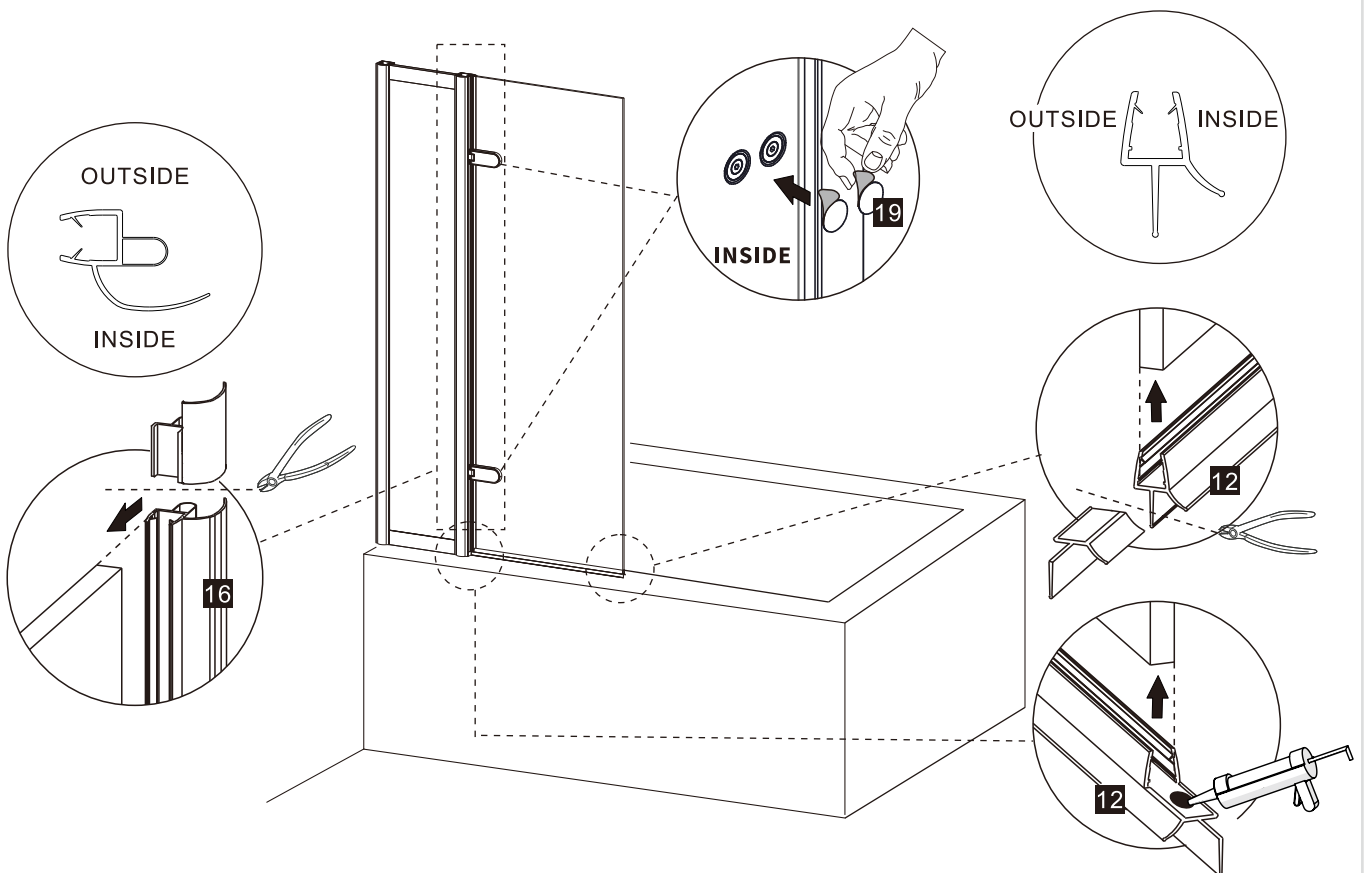


## INSTALLATION

7



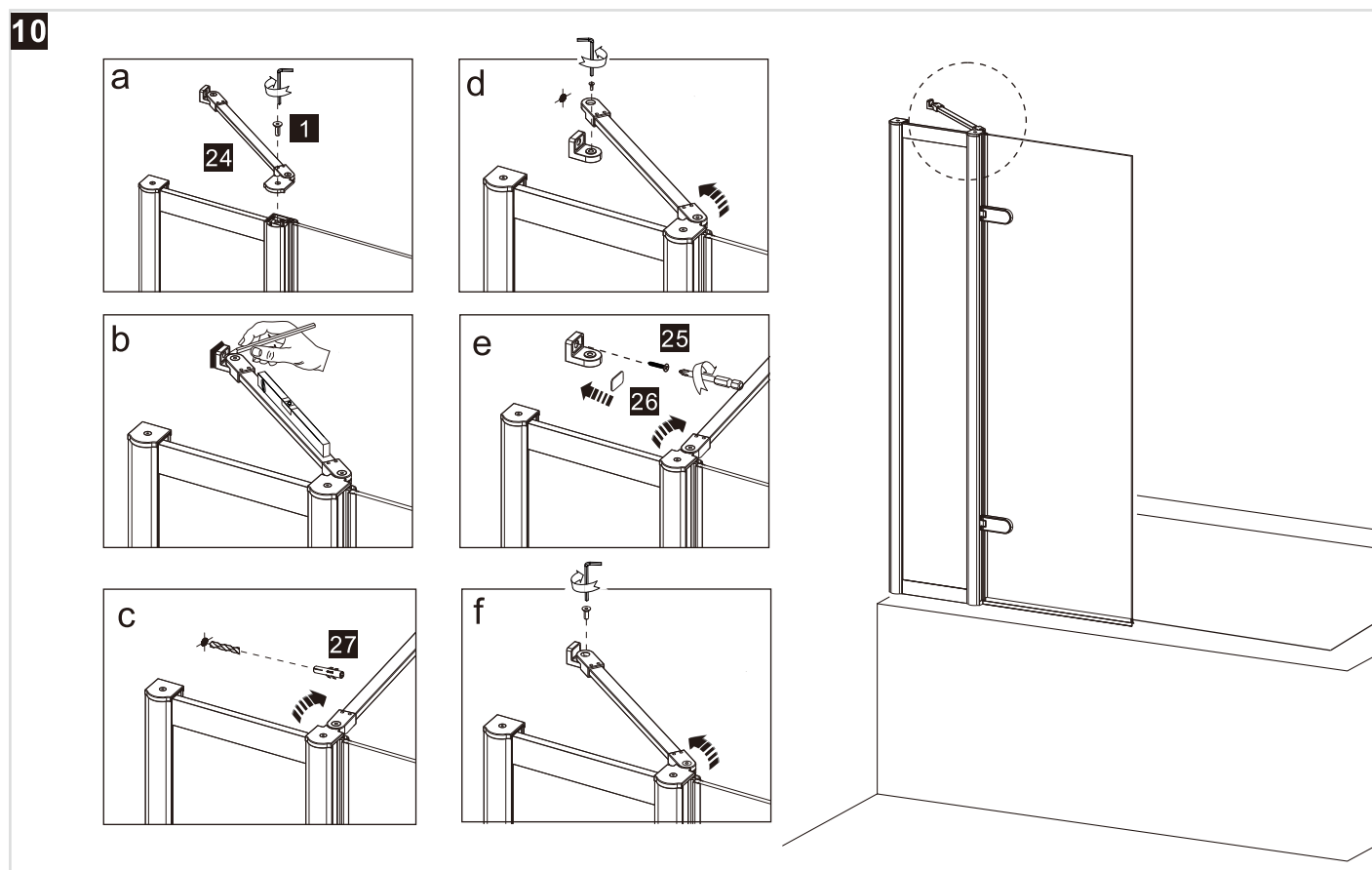
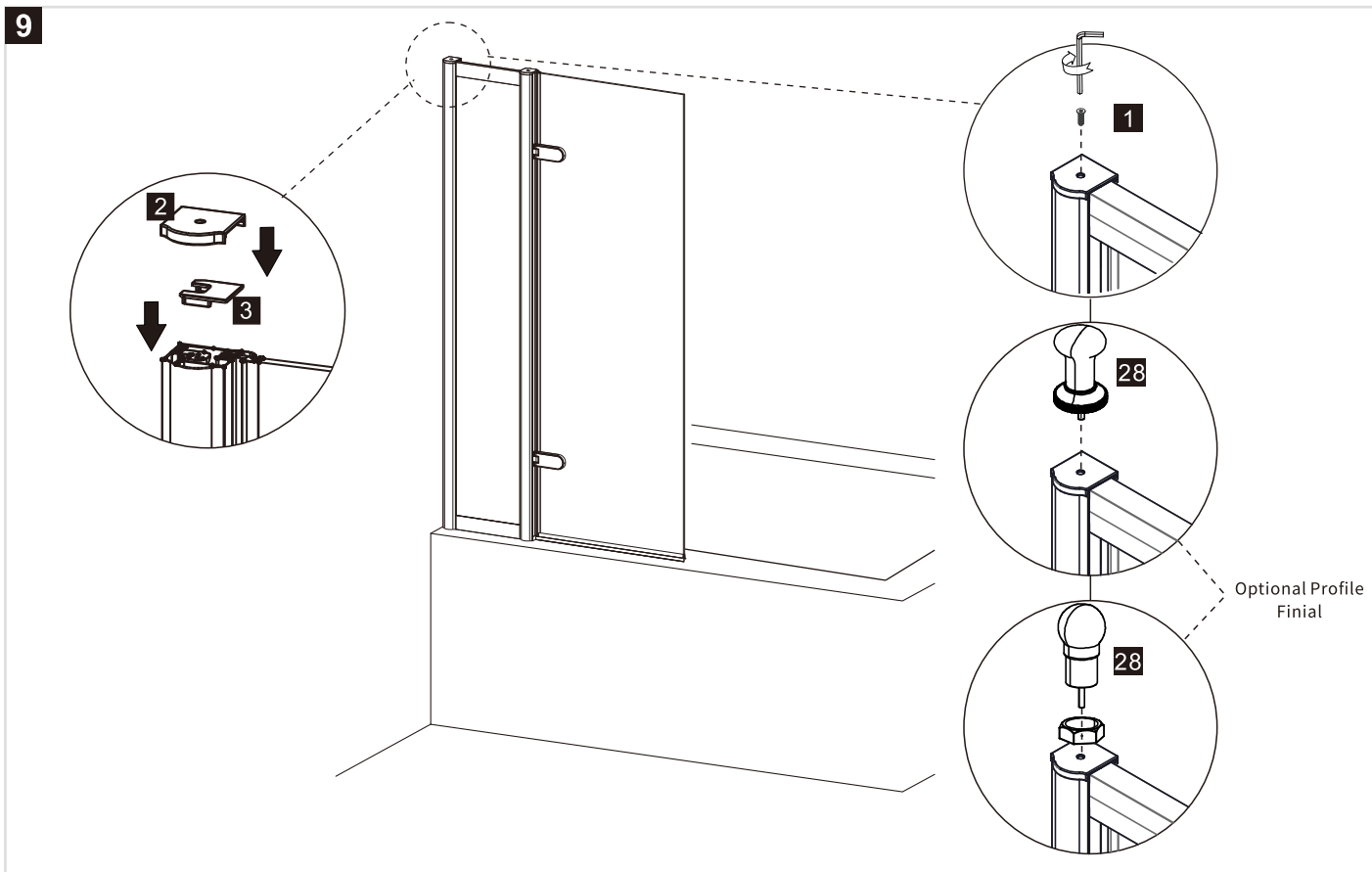
8





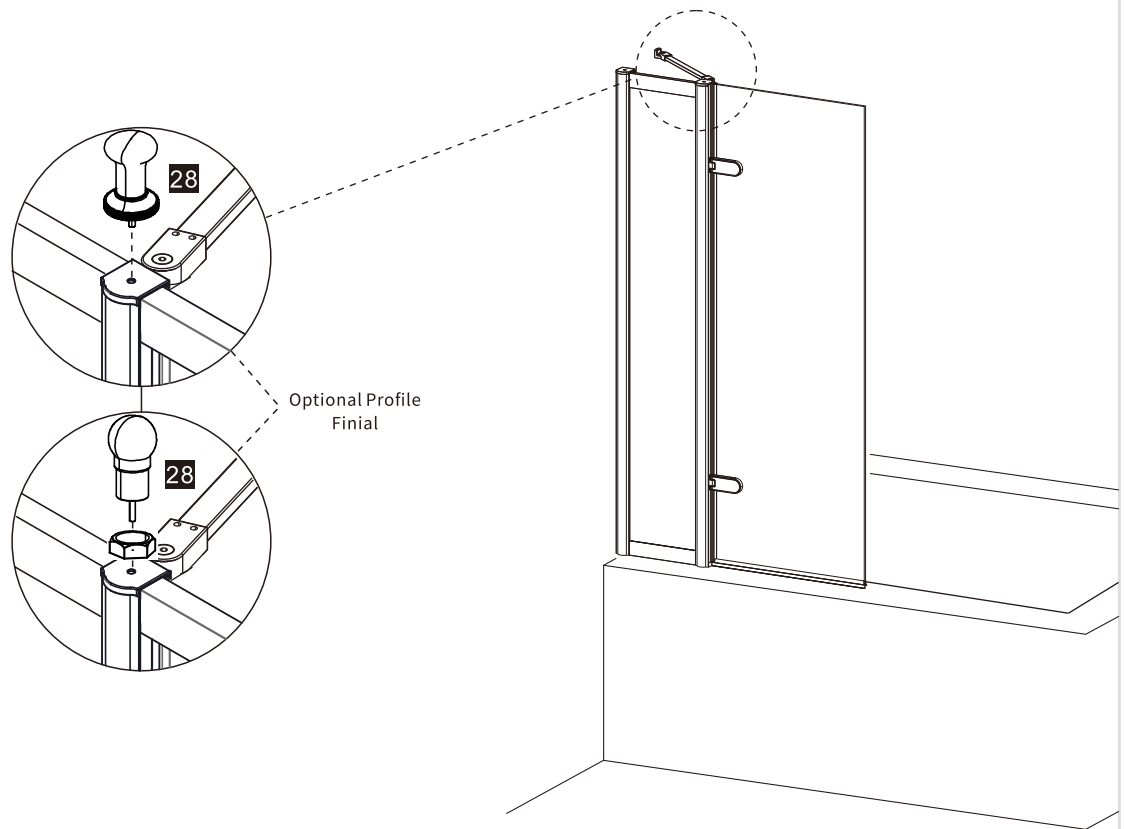
# INSTALLATION

*Burlington®*

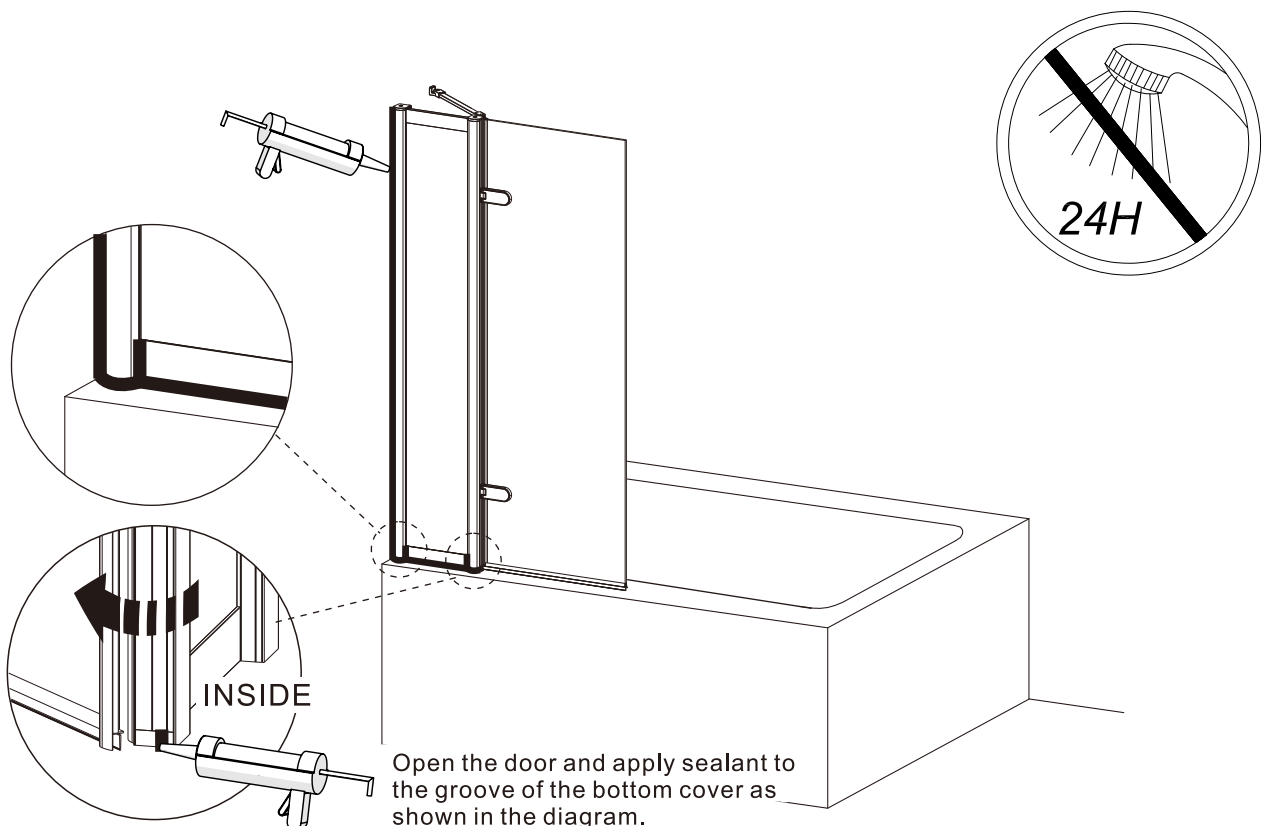


## INSTALLATION

11



12



*Burlington*<sup>®</sup>

*Burlington*<sup>®</sup>

Part of the  
Bathroom Brands Group

We reserve the right to make technical modifications without prior notice.

*Burlington*<sup>®</sup>

Lake View House  
Rennie Drive, Dartford  
Kent DA1 5FU  
United Kingdom  
0345 873 8840  
[www.crosswater.co.uk](http://www.crosswater.co.uk)