

CLASSIQUE

Hinged Inline Bath Screen

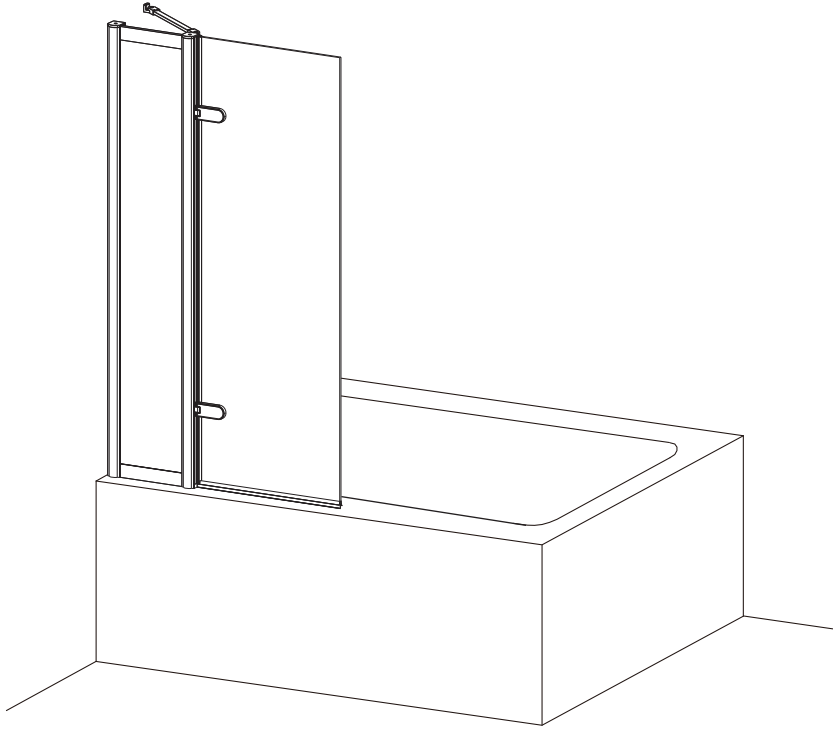
Burlington®

PRODUCT CODES:

CQBSILC0850

CQBSILGC0850

CQBSILLC0850



CQ1909PRFNx



CQ1850PRFNx



Optional profile finial (not supplied with bath screen)

1. Pre-Installation Checklist

☑ Before You Begin:

- Ensure all tiling/grouting is complete.
- Bathtub **must be level and sealed** to tiles.
- Verify door dimensions match your space (see Section 3).
- Check for hidden pipes/cables before drilling.

⚠ Safety Notes:

- **Two people required** for installation (glass is heavy!).
- Wear gloves when handling glass edges.

2. Unpacking & Components

Confirm all parts are present:

- Please refer to all components included on following page titled “COMPONENTS”

Missing/Damaged Parts?

Contact Bathroom Brands immediately: ☎0345 873 8840.

3. Step-by-Step Installation

A. Frame Assembly

1) Mark Drill Points:

- Use a spirit level to mark vertical lines for wall profiles.
- Drill 6mm holes at marked points; insert wall plugs.

2) Attach Wall Profiles:

- Secure profiles with ST4x50mm screws (×4 total).
- Cover ends with profile caps if any.

B. Door Installation

3) Hang the Door:

- Following the instruction to assemble the door, ensure door is fully secured.
- Make necessary adjustment if door doesn't close smoothly.

4) Apply Seals:

- Install necessary seals provided on door and side panel if any.

C. Final Checks

5) Level & Secure:

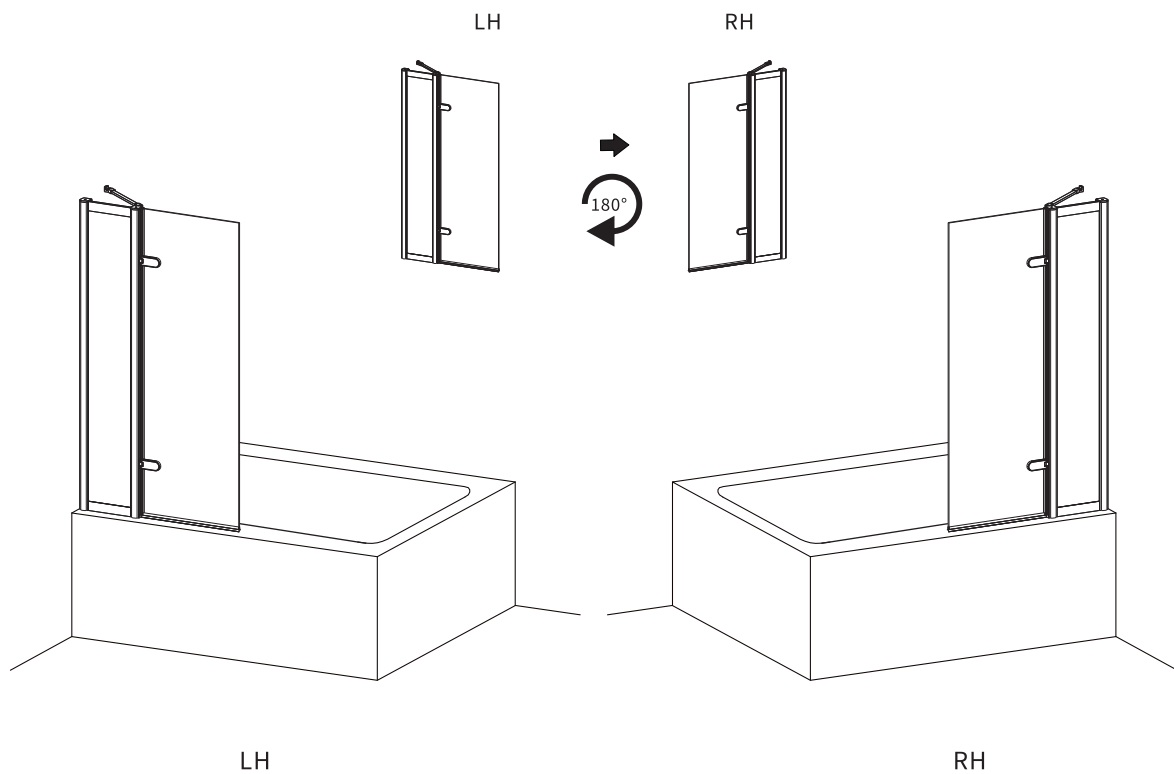
- Confirm door is level; tighten all screws.
- Let silicone cure for 24 hours before use.

4. Care & Maintenance

- **Cleaning:** Use only **pH-neutral soapy water** (pH 6.8–7.2).
- **Avoid:** Abrasives, solvents, or acidic cleaners.

Ensure seals are flush to prevent leaks.

ORIENTATION



This product is reversible for left or right hand opening.
Please follow the diagram, and detail below for your choice of installation.

Tools Required (not supplied):

Spirit Level



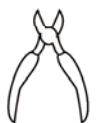
Torque Screw Driver



Pencil



Snips



Drill



6mm Drill Bit



Silicone



Measuring Tape

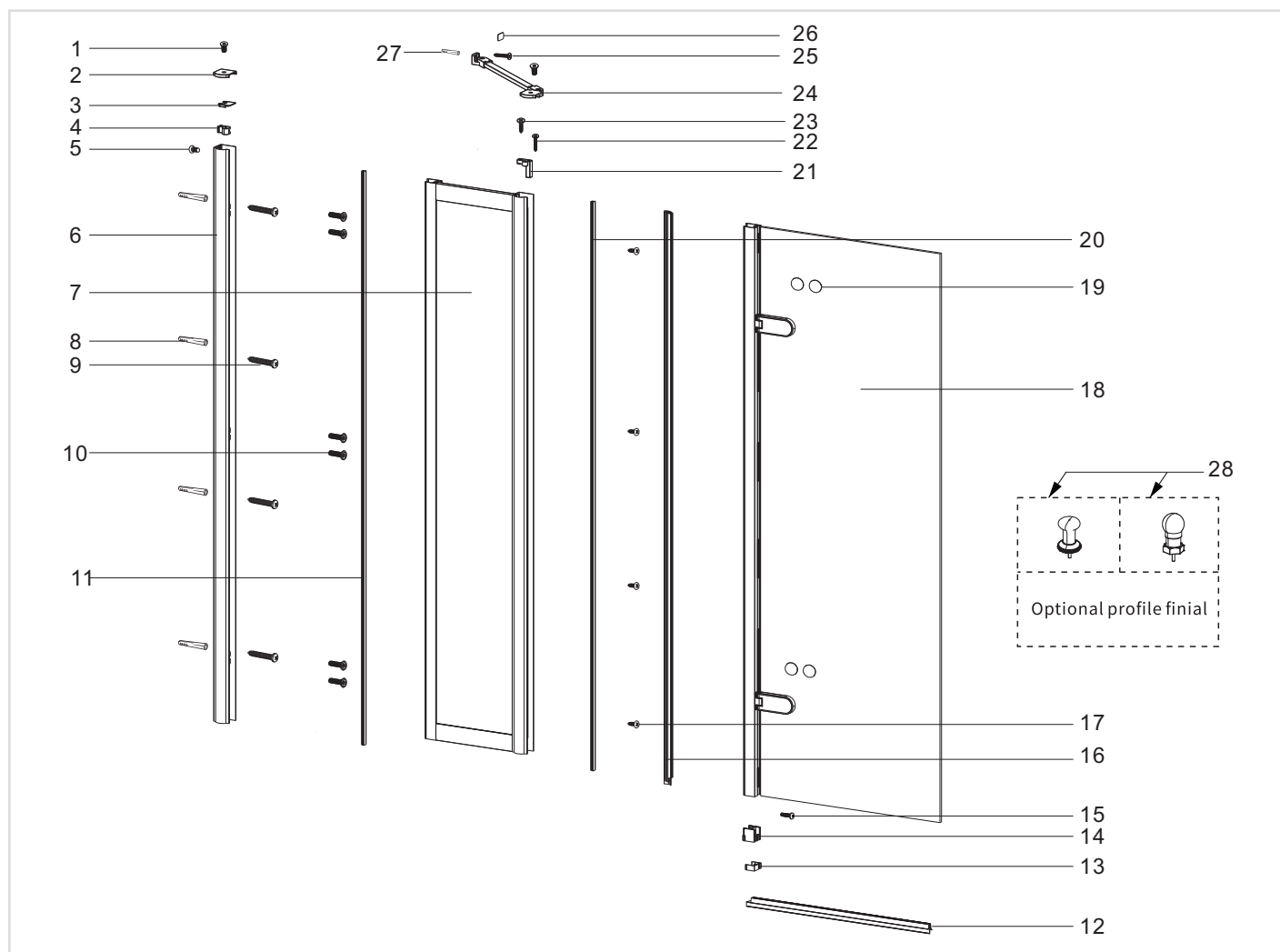


Knife



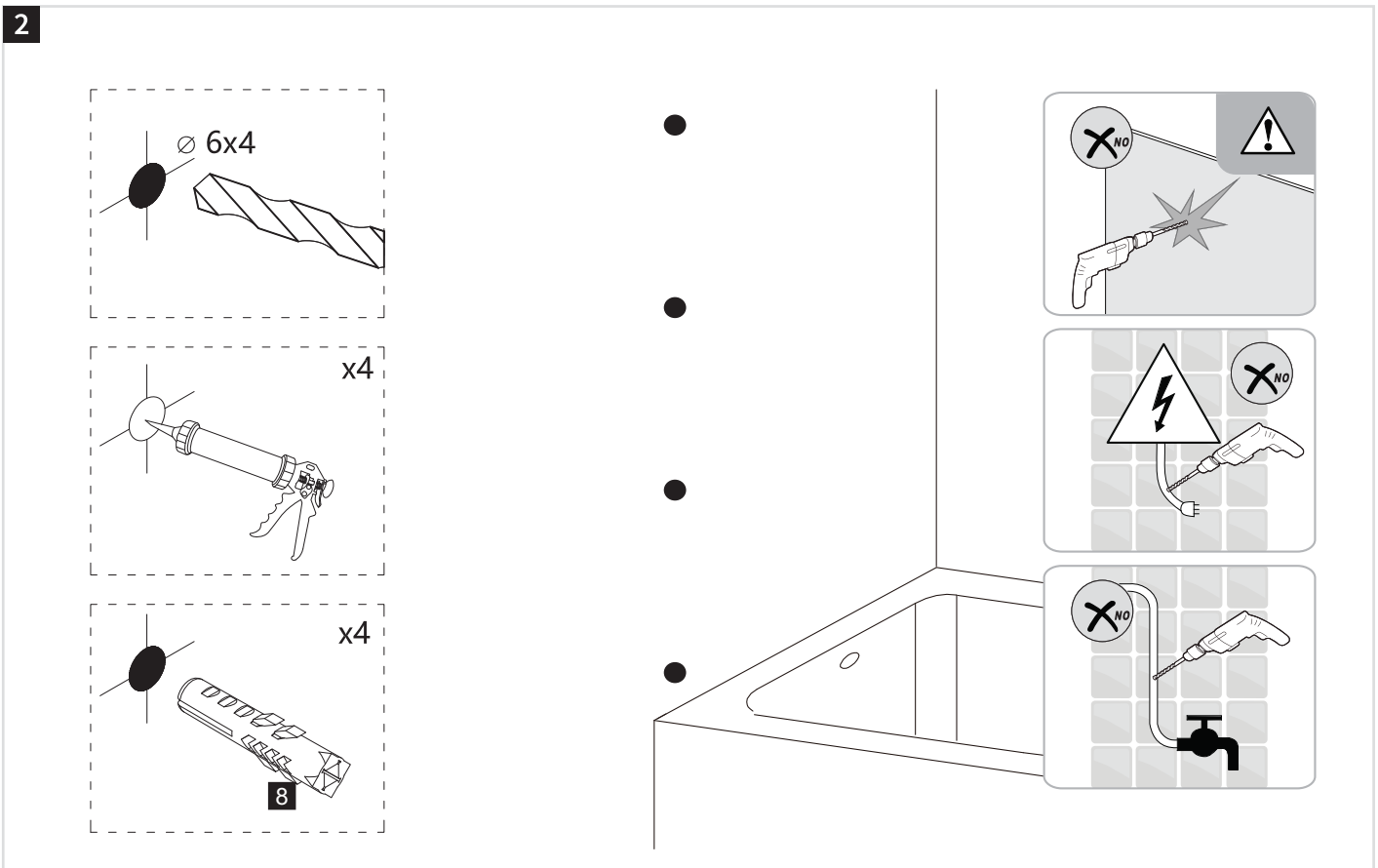
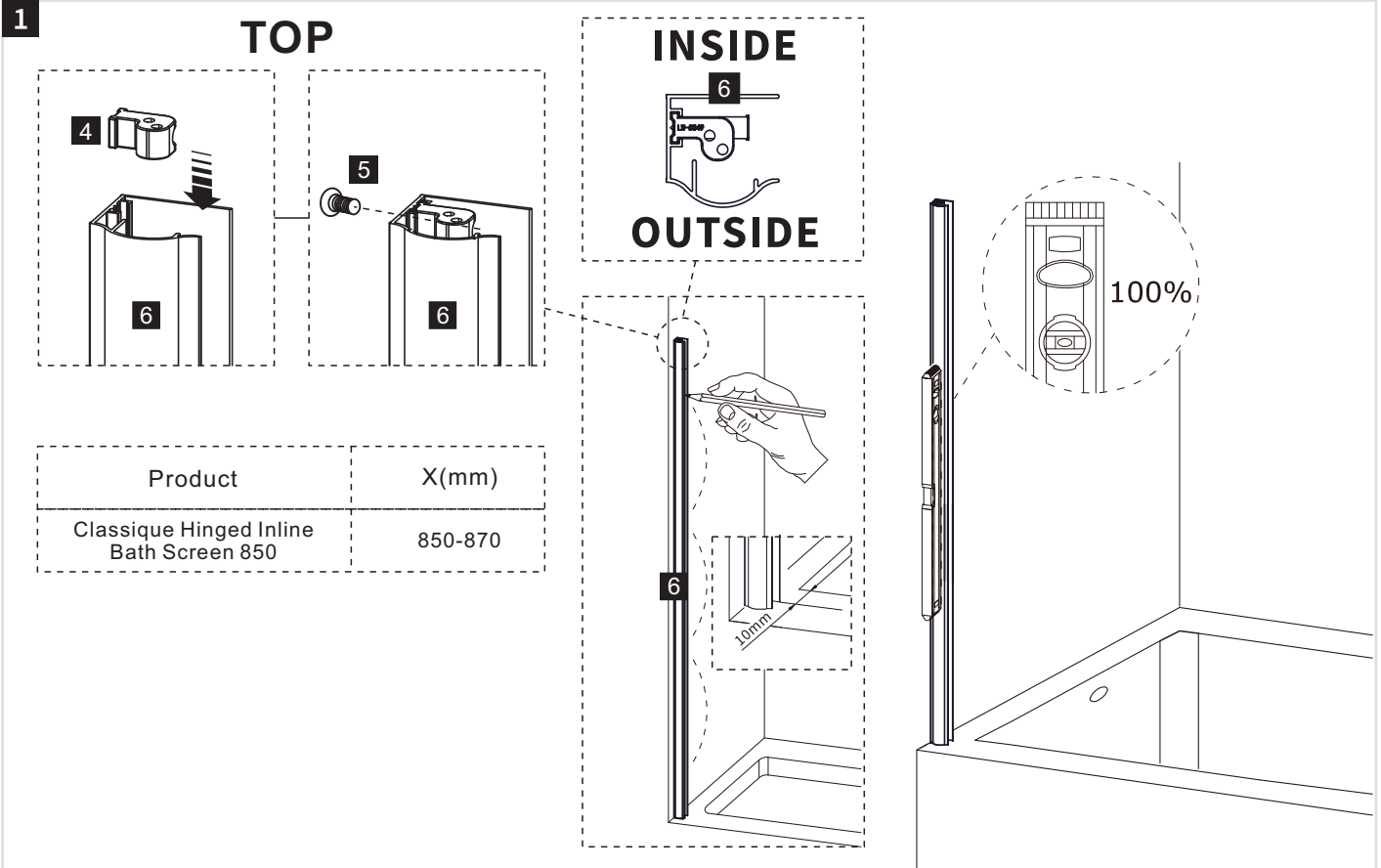
COMPONENTS

Burlington®



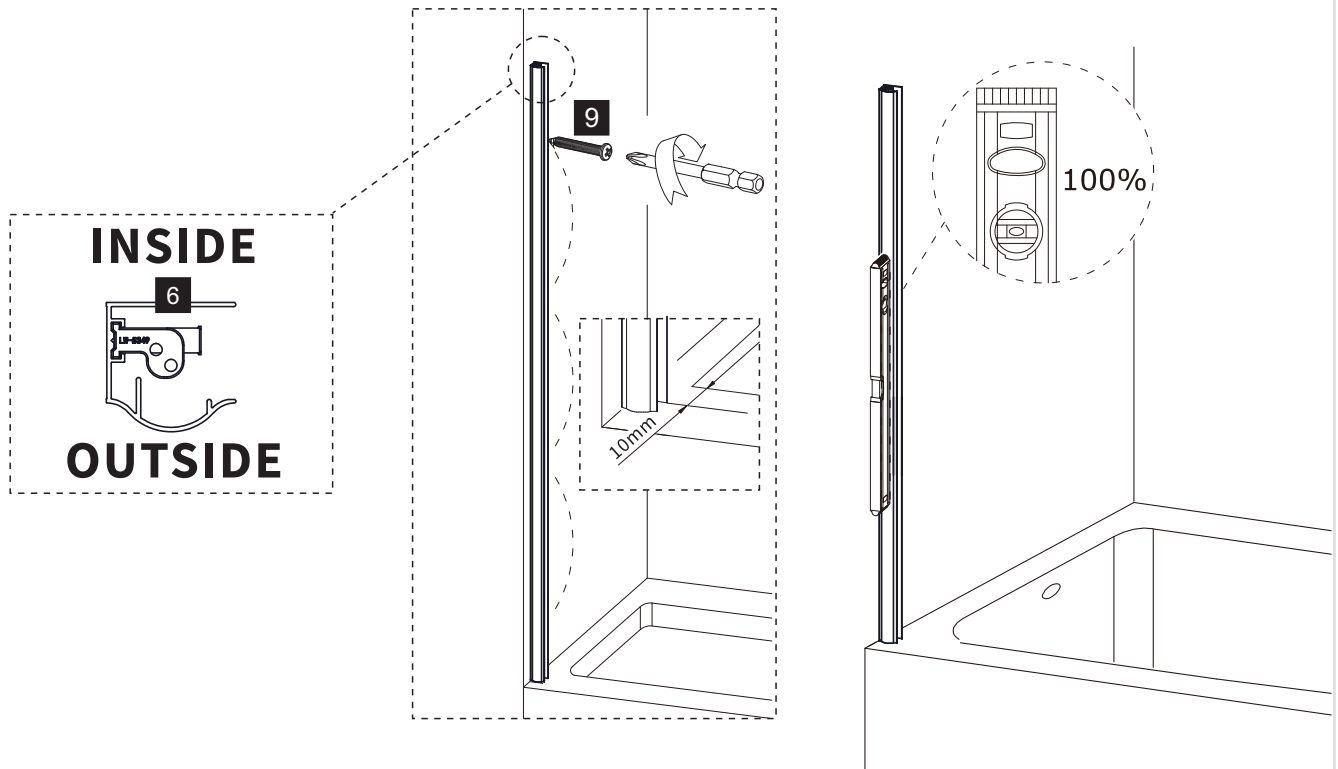
1	M5*14mm Screw	x2	2	Wall Profile Cap	L x1 R x1	3	Adjustment Profile Cap	x1	4	Fixing Part Of Profile Cap	x1
5	M4*12mm Screw	x1	6	Wall Profile	x1	7	Fixed Panel	x1	8	Wall Plug	x4
9	ST4*50mm Screw	x4	10	M5*30mm Screw	x6	11	Profile Cover	L=1500mm x1	12	Bottom Seal	x1
13	Cover Cap	x1	14	Gasket	x1	15	M4*10mm Screw	x1	16	Vertical Door Seal	x1
17	ST4*8mm Screw	x4	18	Moving Door	x1	19	Hinge Cap	x4	20	Profile Cover	L=1487mm x1
21	Fixing Part Of Bracing Bar	Lx1 Rx1	22	ST4*50mm Screw	x1	23	ST4X30mm Screw	x1	24	Bracing Bar	x1
25	ST4*50mm Screw	x1	26	Screw Cap Of Bracing Bar	x1	27	Wall Plug	x1	28	Optional Profile Finial	x2
29	Allen Key	4mm 3mm 2.5mm									

INSTALLATION

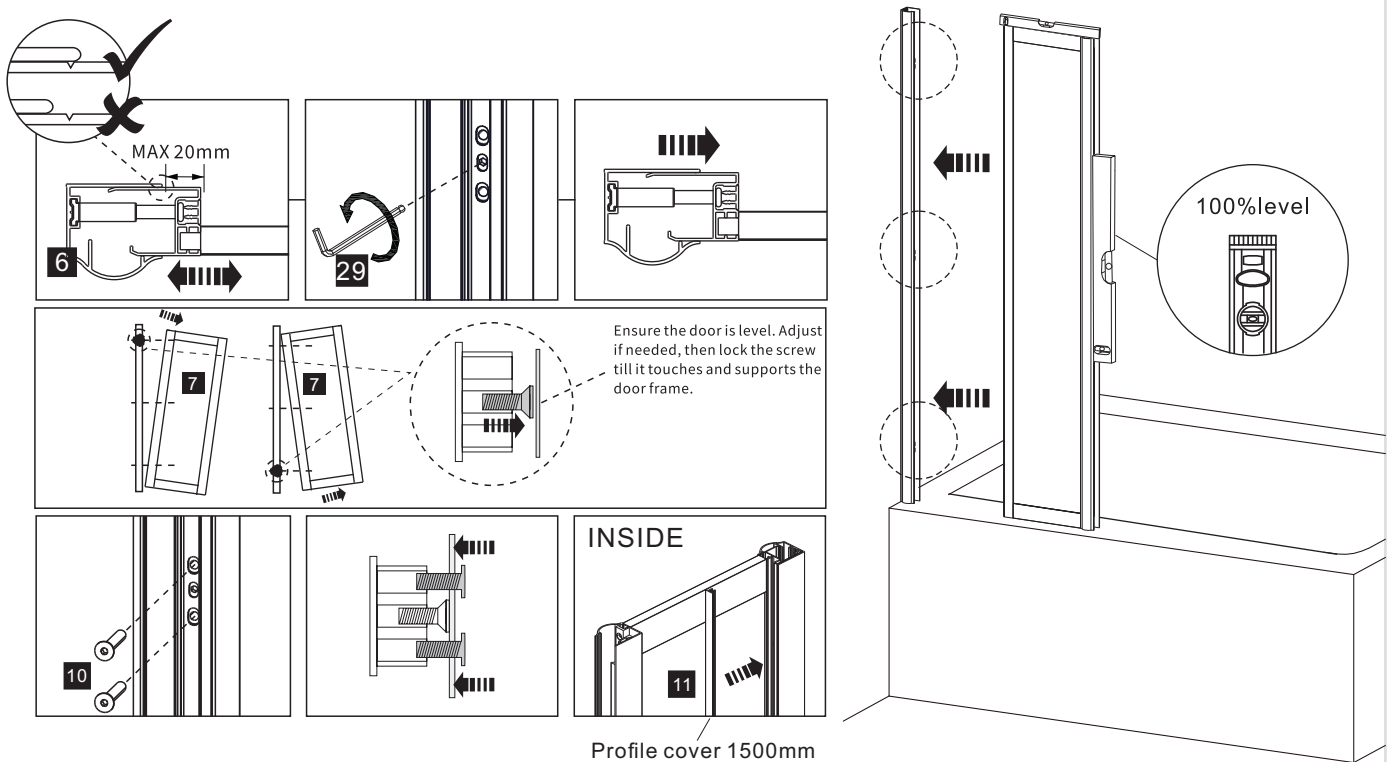


INSTALLATION

3



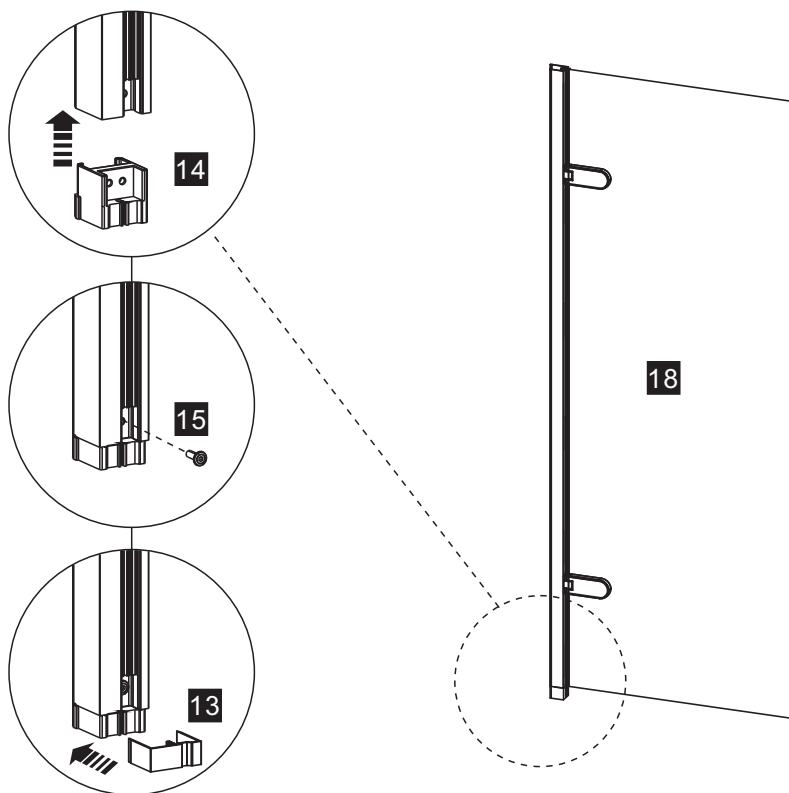
4



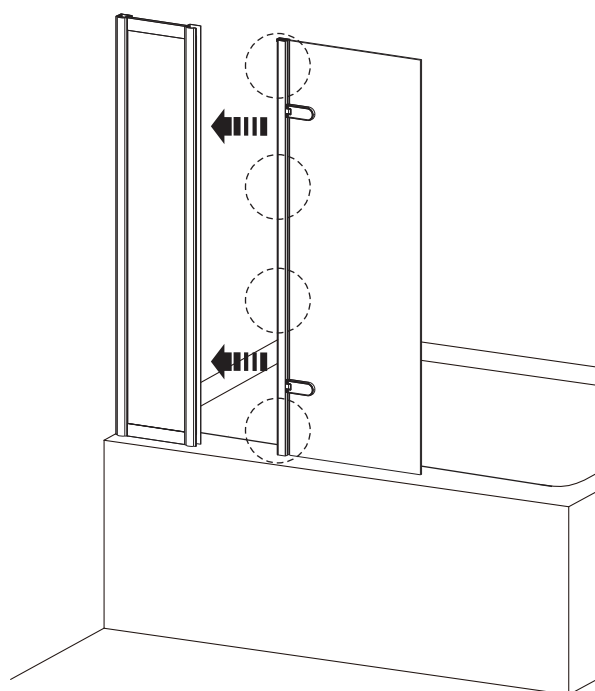
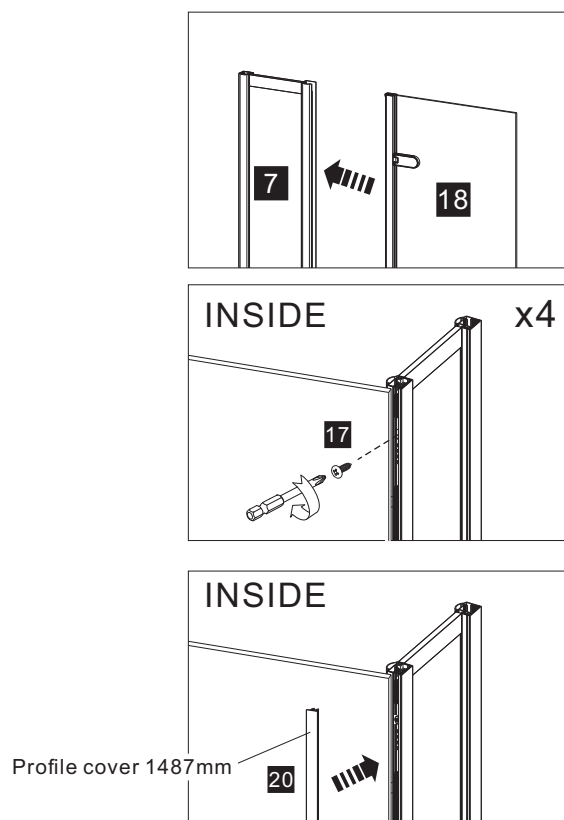
INSTALLATION

Burlington®

5

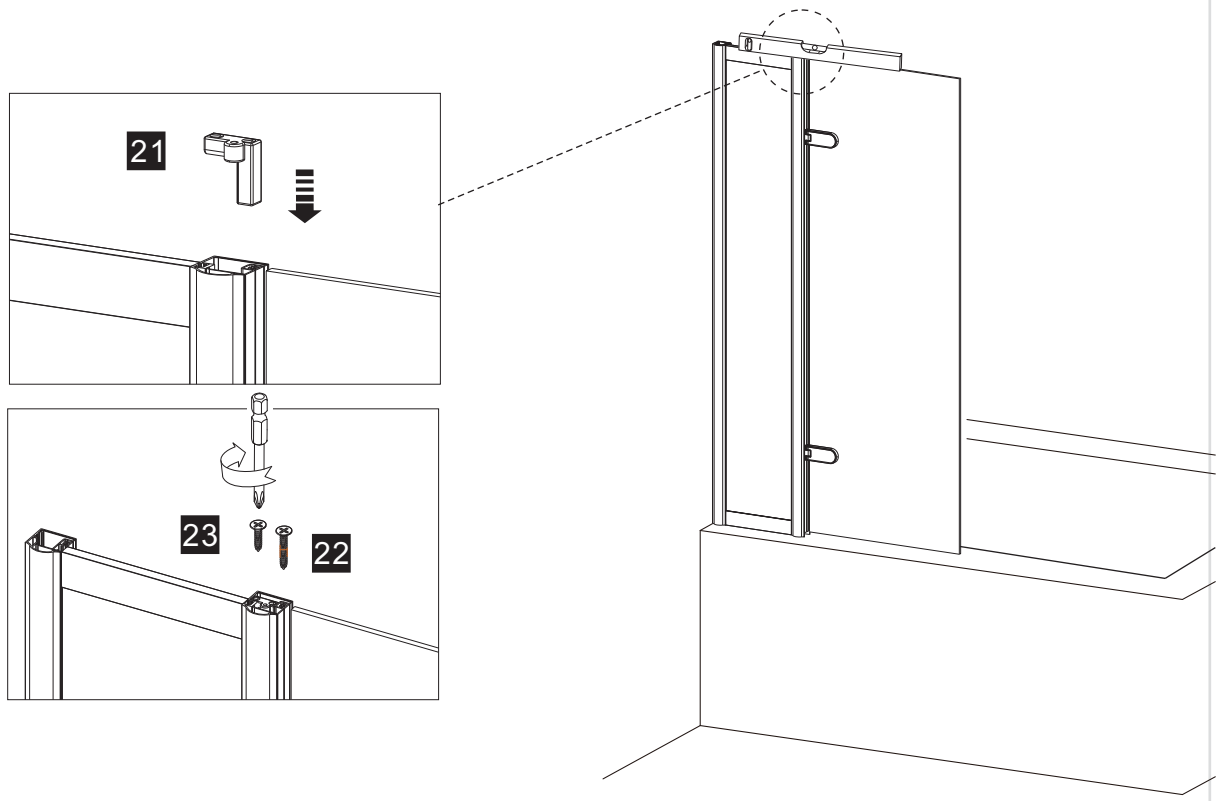


6

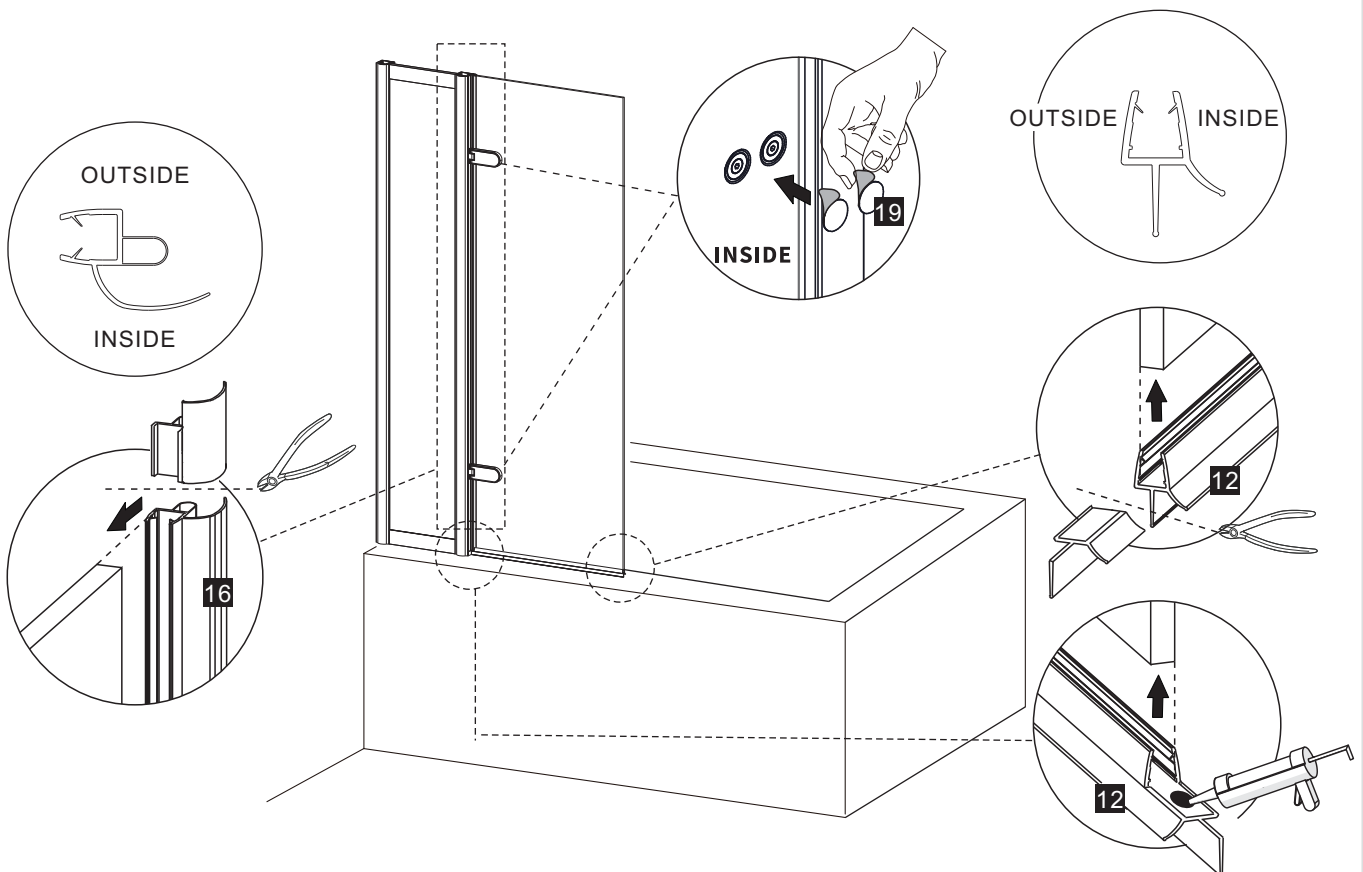


INSTALLATION

7

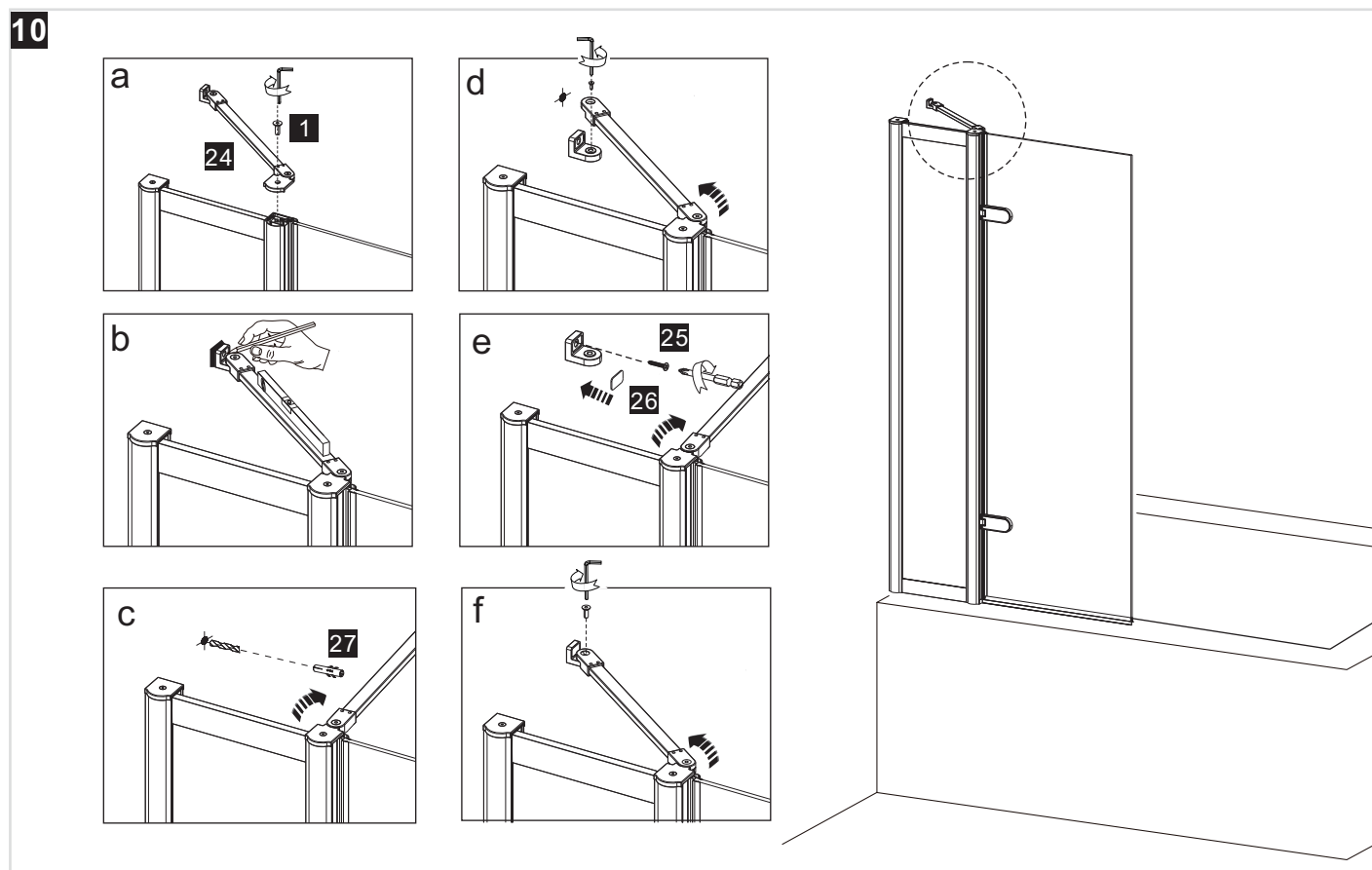
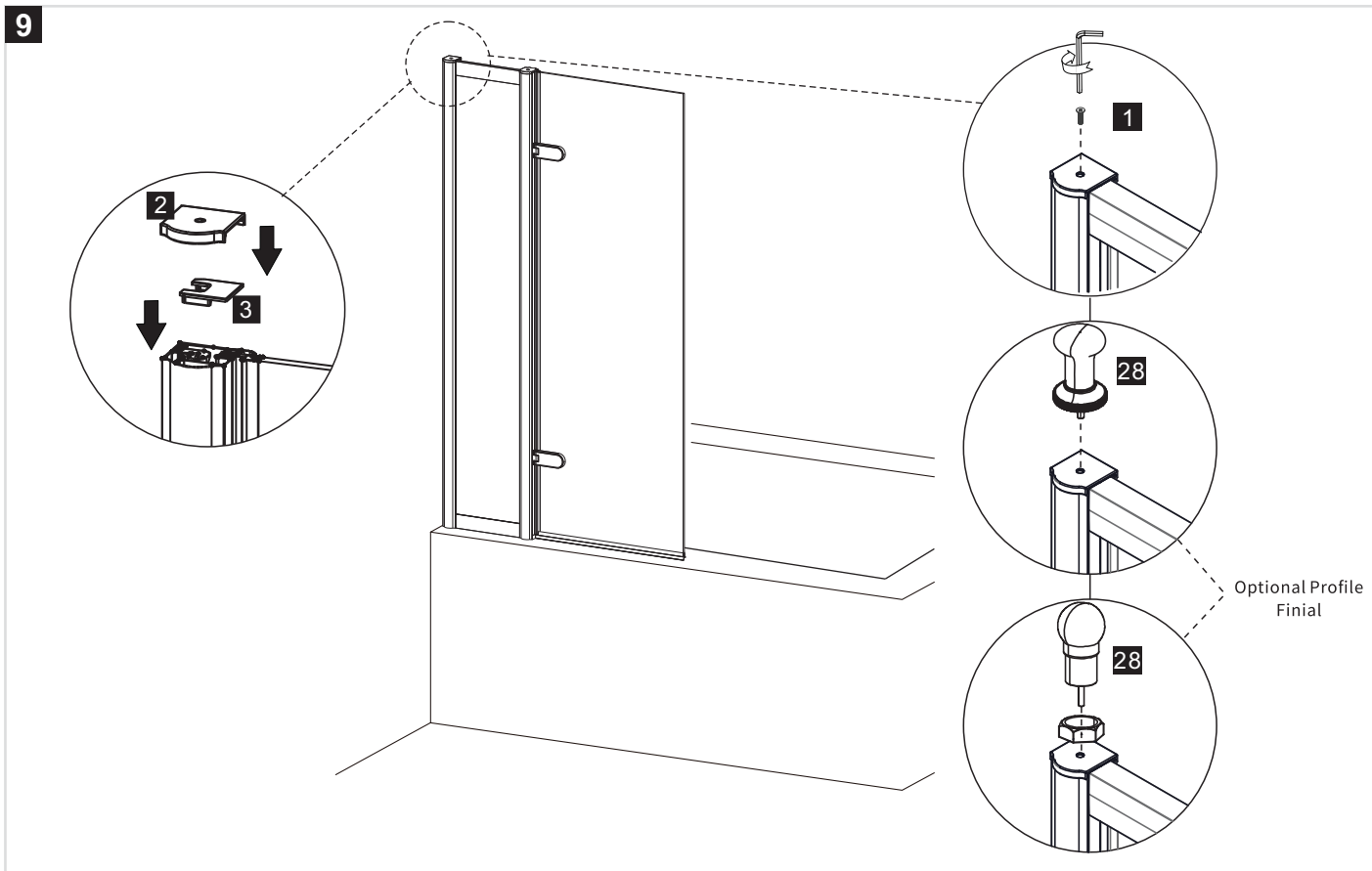


8



INSTALLATION

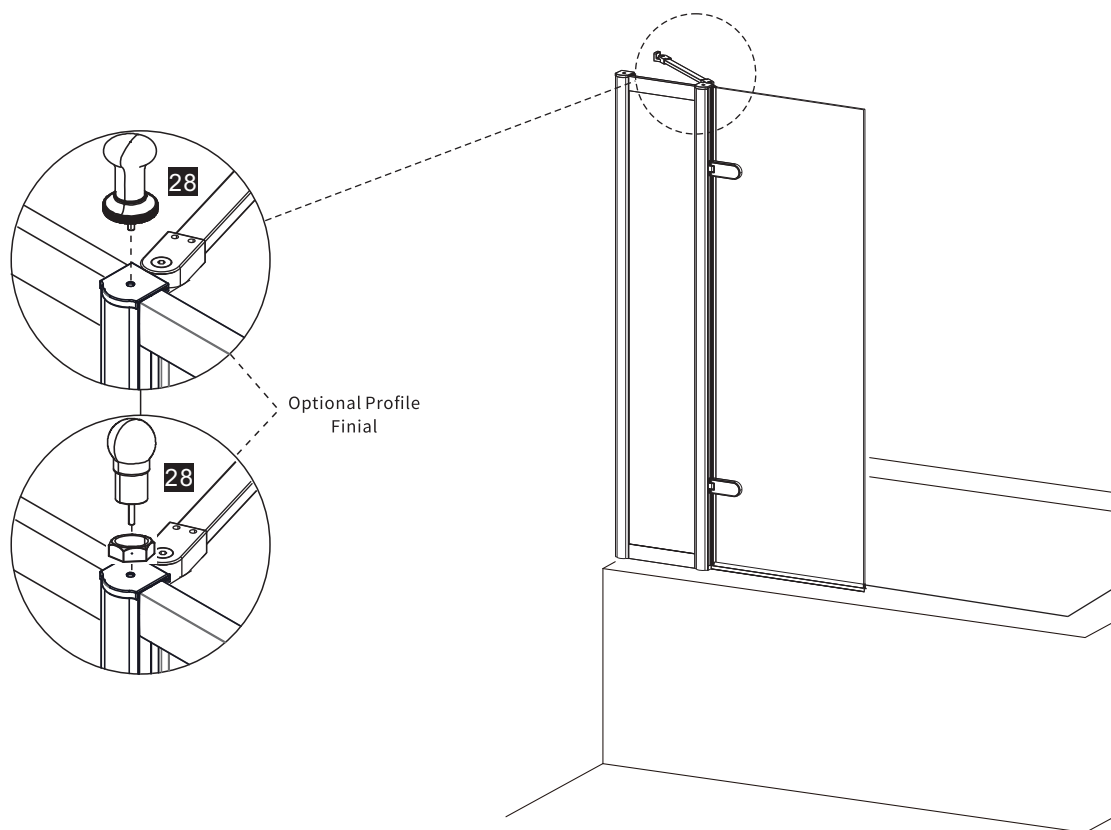
Burlington®



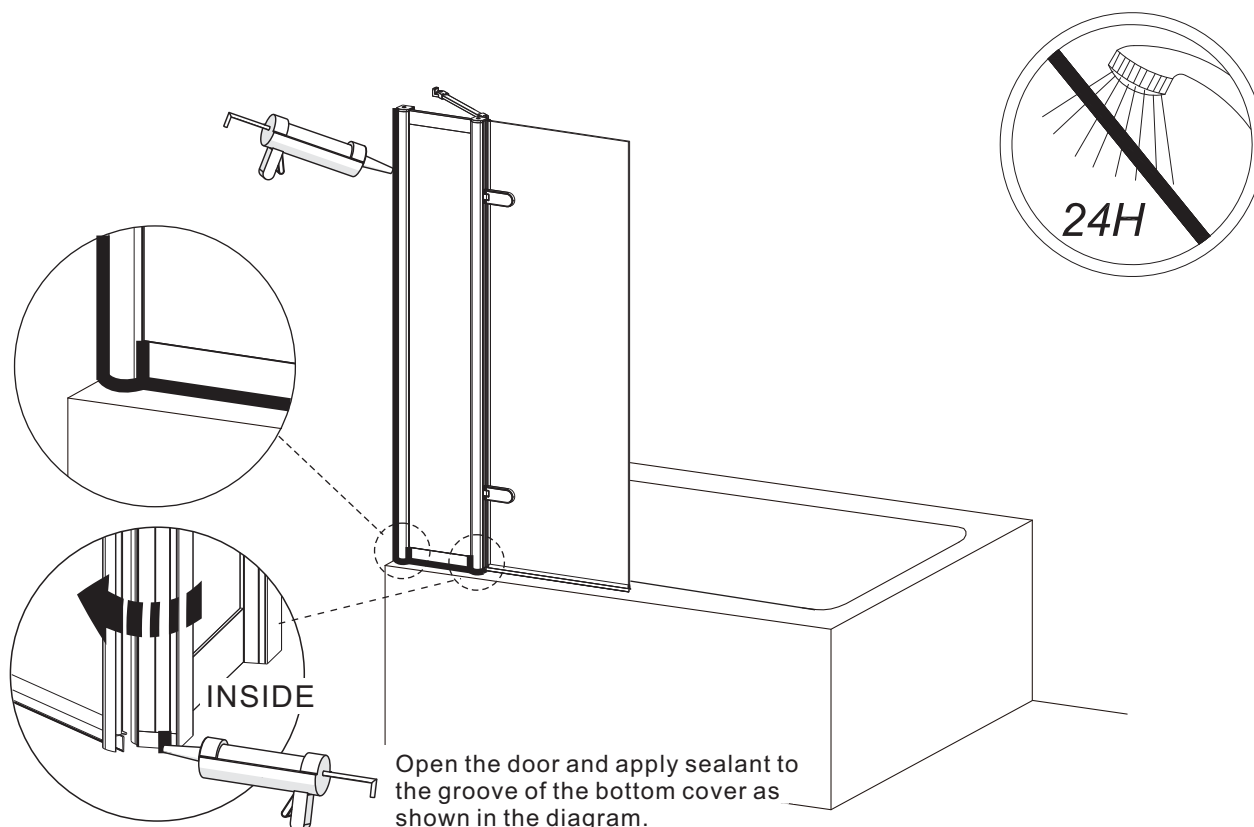
INSTALLATION

Burlington®

11



12



Burlington[®]

Burlington[®]

Part of the
Bathroom Brands Group

We reserve the right to make technical modifications without prior notice.

Burlington[®]

Lake View House
Rennie Drive, Dartford
Kent DA1 5FU
United Kingdom
0345 873 8840
www.crosswater.co.uk