

# CLASSIQUE

Hinged Bath Screen with Access Door

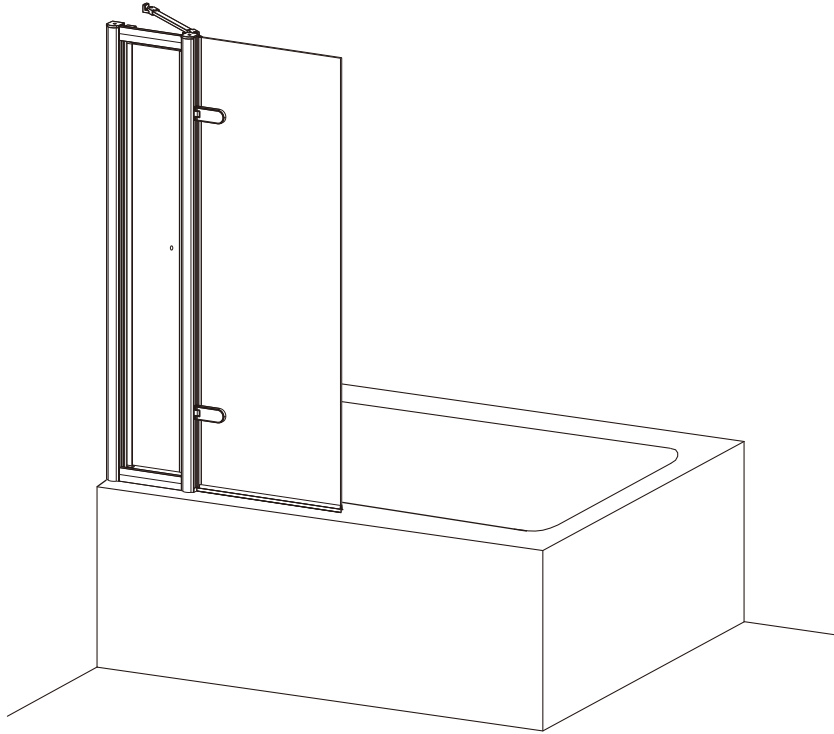
*Burlington®*

## PRODUCT CODES:

CQBSILADC0850

CQBSILADGC0850

CQBSILADL0850



CQ1909PRFNx



CQ1850PRFNx

Optional profile finial  
(not supplied with bath screen)



CQ1909BSHDBPx



CQ1850BSHDBPx

Optional handle  
(not supplied with bath screen)

## 1. Pre-Installation Checklist

### ☑ Before You Begin:

- Ensure all tiling/grouting is complete.
- Bathtub **must be level and sealed** to tiles.
- Verify door dimensions match your space (see Section 3).
- Check for hidden pipes/cables before drilling.

### ⚠ Safety Notes:

- **Two people required** for installation (glass is heavy!).
- Wear gloves when handling glass edges.

## 2. Unpacking & Components

### Confirm all parts are present:

- Please refer to all components included on following page titled “COMPONENTS”

### Missing/Damaged Parts?

Contact Bathroom Brands immediately: ☎0345 873 8840.

## 3. Step-by-Step Installation

### A. Frame Assembly

#### 1) Mark Drill Points:

- Use a spirit level to mark vertical lines for wall profiles.
- Drill 6mm holes at marked points; insert wall plugs.

#### 2) Attach Wall Profiles:

- Secure profiles with ST4x50mm screws (×4 total).
- Cover ends with profile caps if any.

### B. Door Installation

#### 3) Hang the Door:

- Following the instruction to assemble the door, ensure door is fully secured.
- Make necessary adjustment if door doesn't close smoothly.

#### 4) Apply Seals:

- Install necessary seals provided on door and side panel if any.

### C. Final Checks

#### 5) Level & Secure:

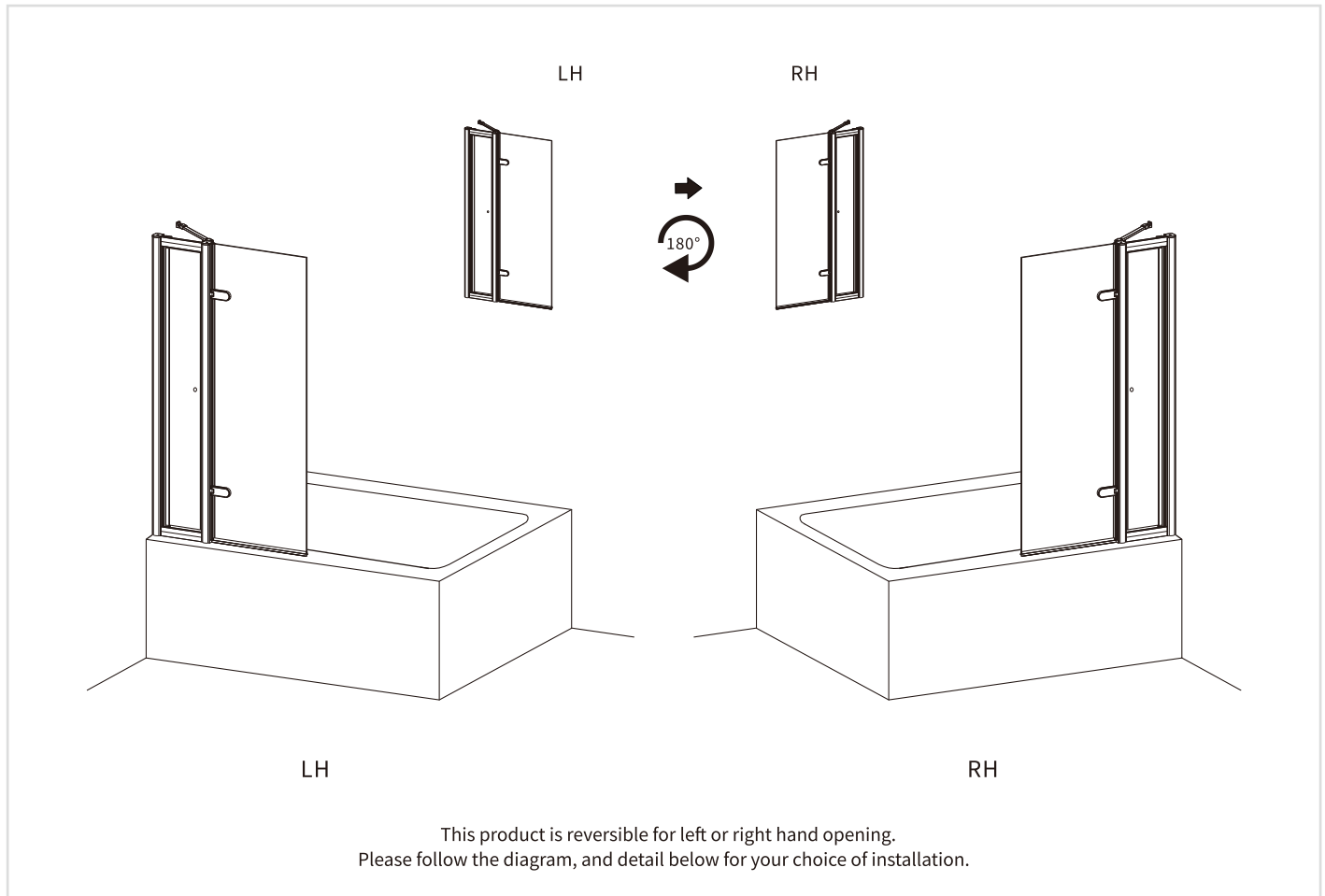
- Confirm door is level; tighten all screws.
- Let silicone cure for 24 hours before use.

## 4. Care & Maintenance

- **Cleaning:** Use only **pH-neutral soapy water** (pH 6.8–7.2).
- **Avoid:** Abrasives, solvents, or acidic cleaners.

Ensure seals are flush to prevent leaks.

## ORIENTATION

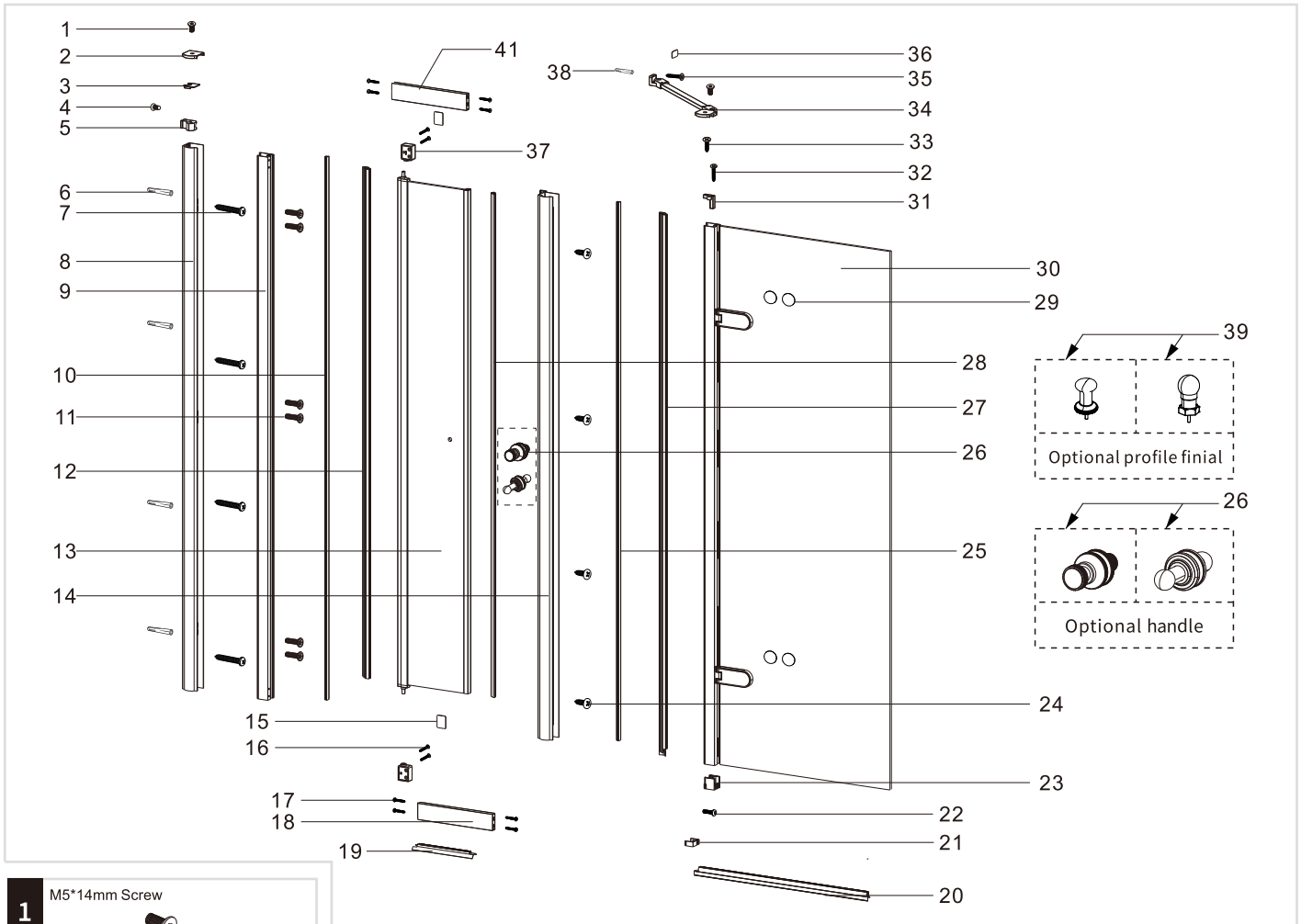


### Tools Required (not supplied):

Spirit Level		Torque Screw Driver	
Pencil		Snips	
Drill		6mm Drill Bit	
Silicone		Measuring Tape	
Knife			

# COMPONENTS

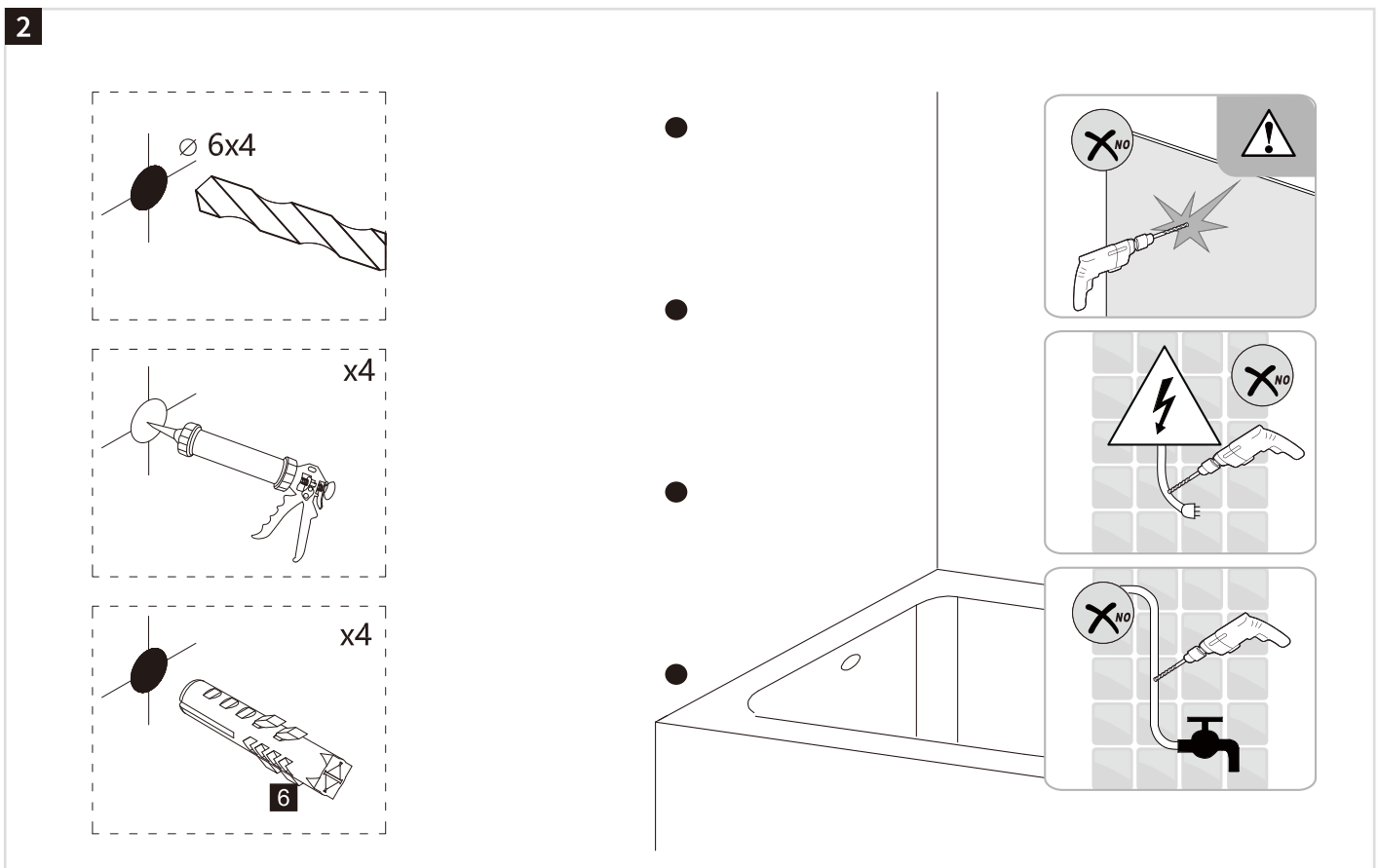
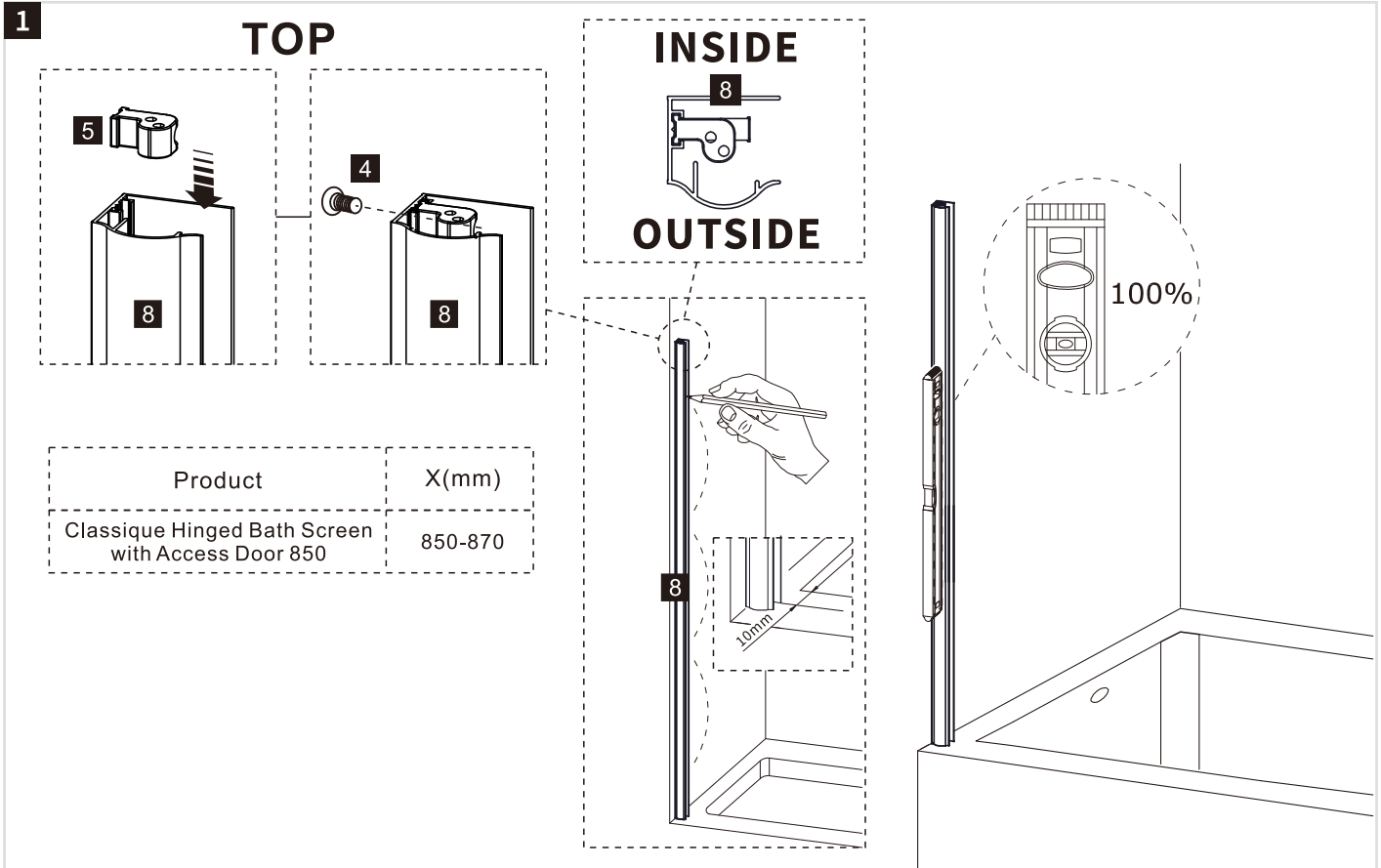
Burlington®



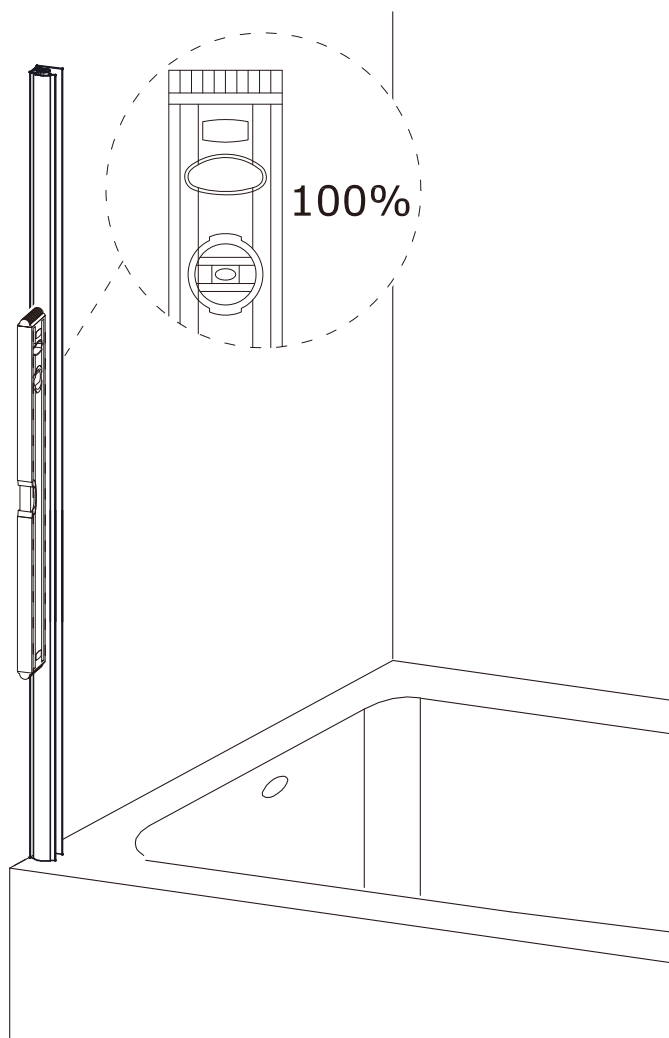
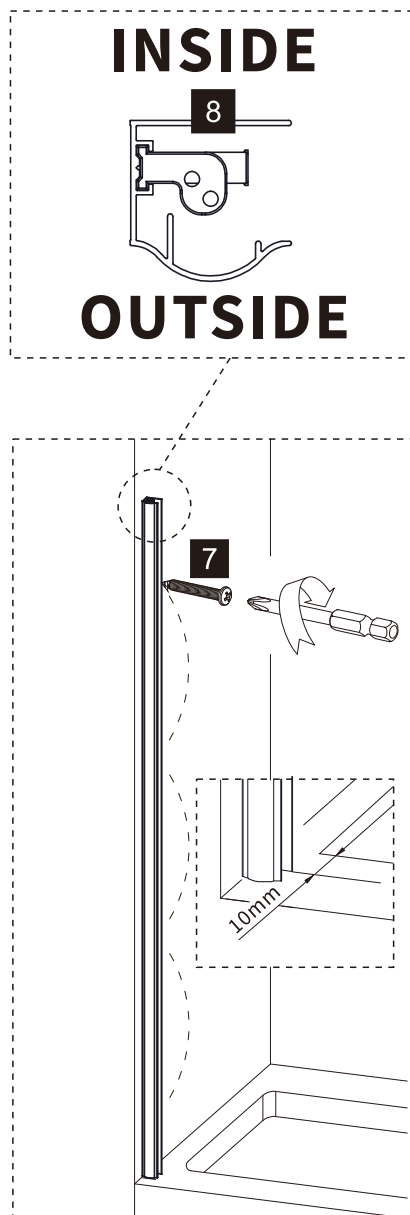
<b>1</b>	M5*14mm Screw	x2	<b>3</b>	Adjustment Profile Cap	x1	<b>4</b>	M4*12mm Screw	x1	<b>5</b>	Fixing Part Of Profile Cap	x1
<b>2</b>	Wall Profile Cap LH x1 RH X1		<b>7</b>	ST4*50mm Screw	x4	<b>8</b>	Wall Profile	x1	<b>9</b>	Adjustment Profile	x1
<b>6</b>	Wall Plug	x4	<b>11</b>	M5*30mm Screw	x6	<b>12</b>	Vertical Door Seal 1405mm	x1	<b>13</b>	Access Door	x1
<b>10</b>	Profile Cover 1500mm	x1	<b>15</b>	Access Door Pivot Seat Cap	x2	<b>16</b>	ST4*25mm Screw	x4	<b>17</b>	ST4*30mm Screw	x8
<b>14</b>	Door Profile	x1	<b>19</b>	Bottom Seal LH x1 RH X1		<b>20</b>	Bottom Seal	x1	<b>21</b>	Cover Cap	x1
<b>18</b>	Rail A	x1	<b>23</b>	Gasket	x1	<b>24</b>	ST4*8mm Screw	x4	<b>25</b>	Profile Cover 1487mm	x1
<b>22</b>	M4*10mm Screw	x1	<b>27</b>	Vertical Door Seal 1520mm	x1	<b>28</b>	Magnetic Seal	x1	<b>29</b>	Hinge Cap	x4
<b>26</b>	Optional Handle	x1	<b>31</b>	Fixing Part Of Bracing Bar LH x1 RH X1		<b>32</b>	ST4*50mm Screw	x1	<b>33</b>	ST4*30mm Screw	x1
<b>30</b>	Moving Door	x1	<b>35</b>	ST5*40mm Screw	x1	<b>36</b>	Screw Cap Of Bracing Bar	x1	<b>37</b>	Access Door Pivot seat	x2
<b>34</b>	Bracing Bar	x1	<b>39</b>	Optional Profile Final	x2	<b>40</b>	Allen Key 4mm 3mm 2.5mm		<b>41</b>	Rail B	x1
<b>38</b>	Wall Plug	x1									



## INSTALLATION



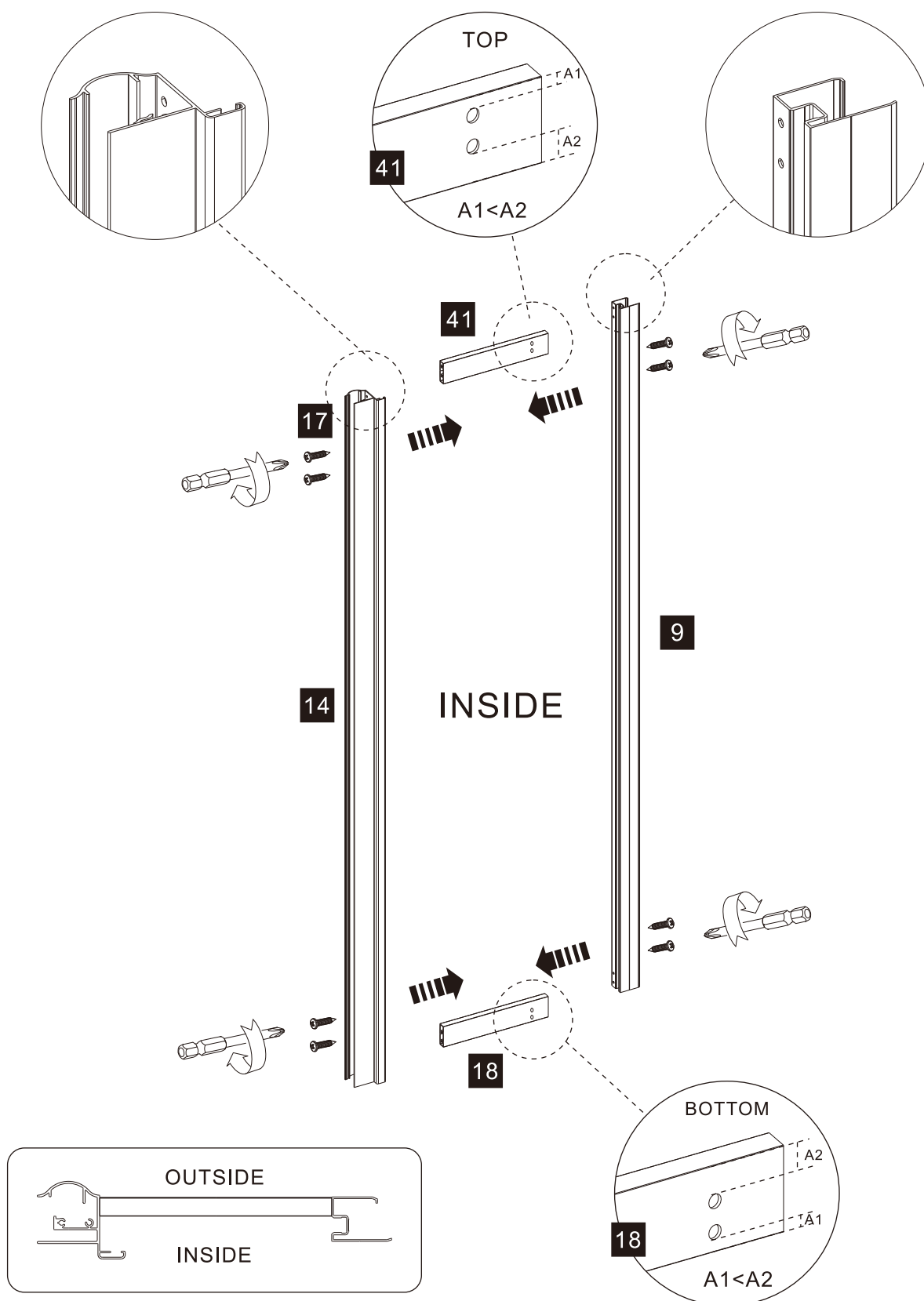
3



# INSTALLATION

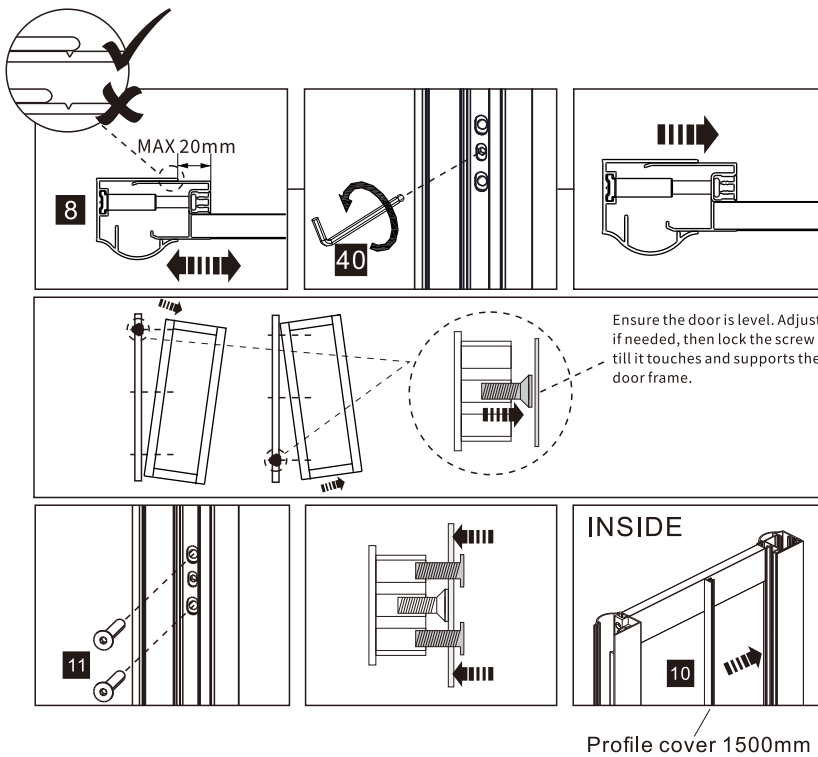
Burlington®

4

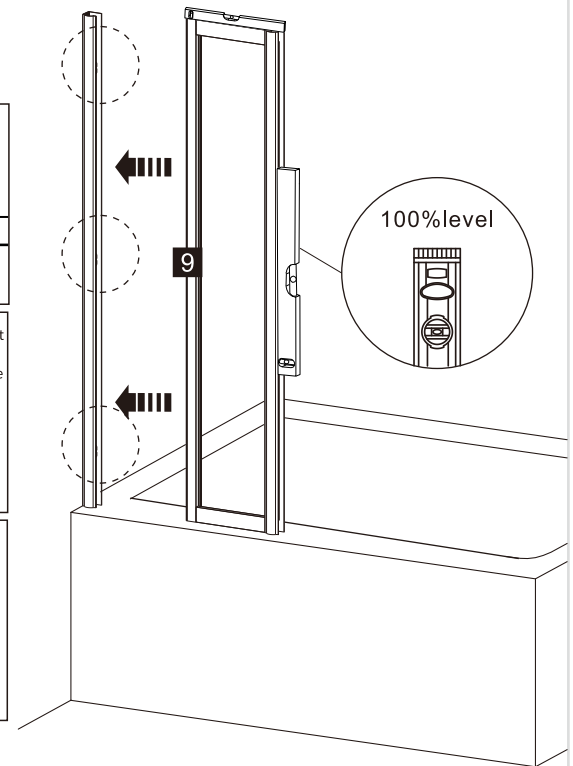


## INSTALLATION

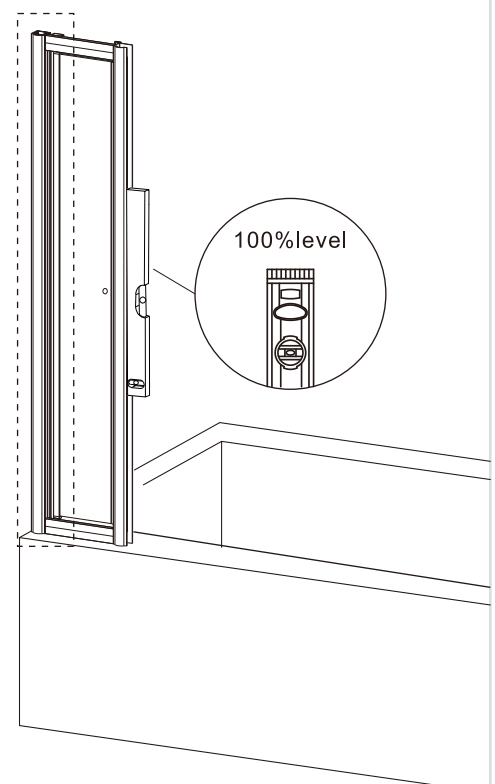
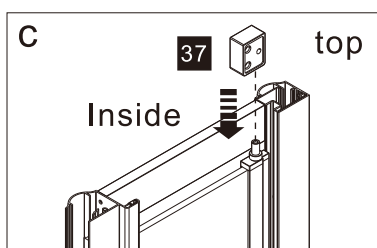
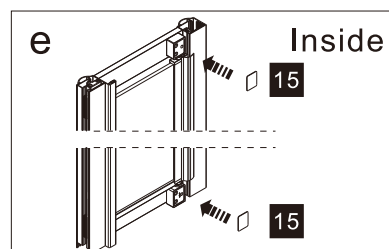
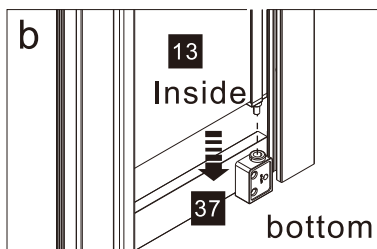
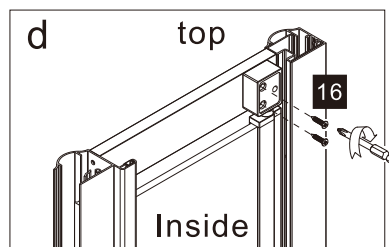
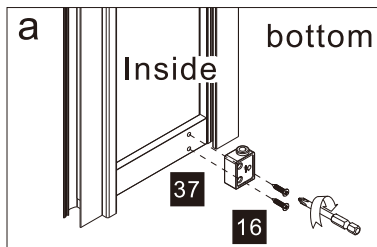
5



Profile cover 1500mm



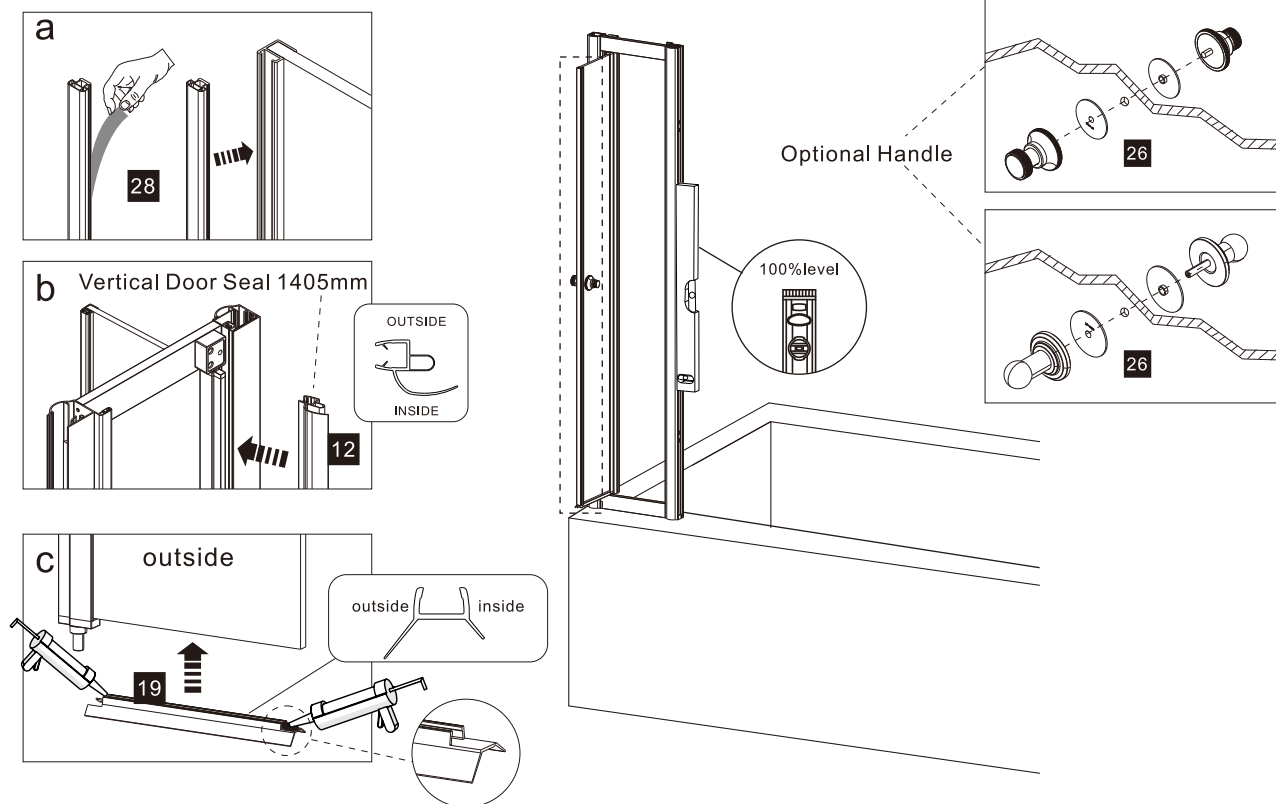
6



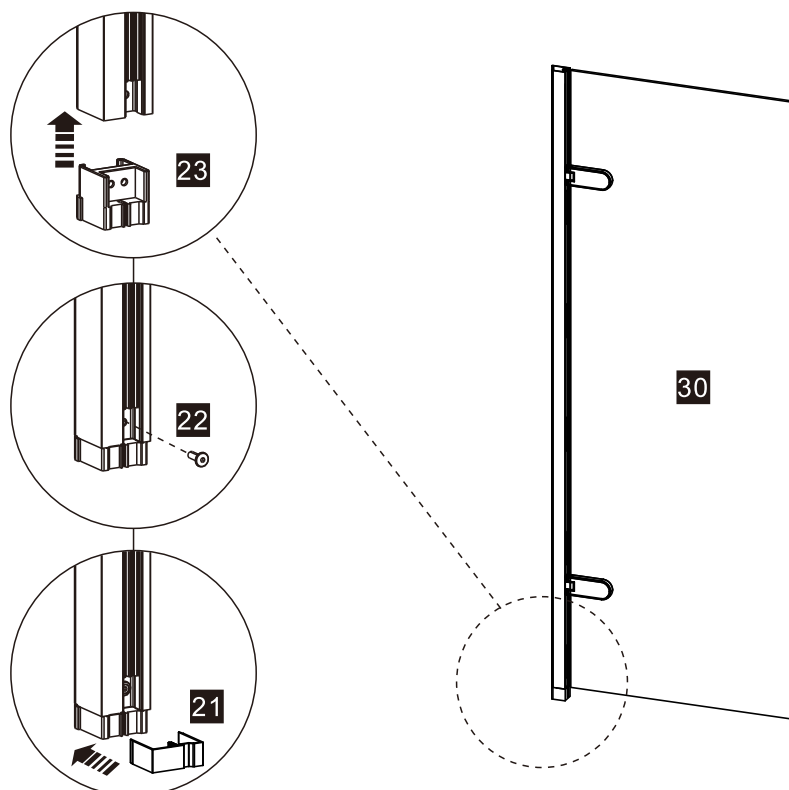
# INSTALLATION

*Burlington®*

7

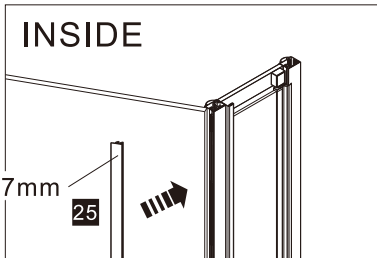
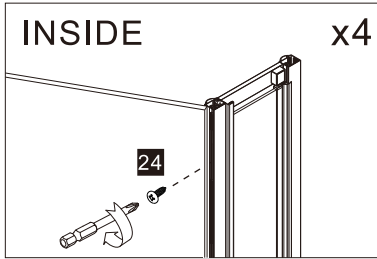
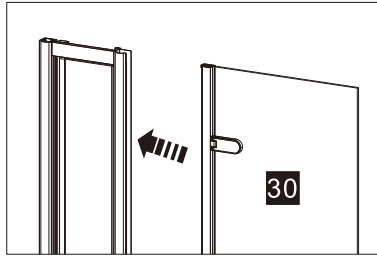


8

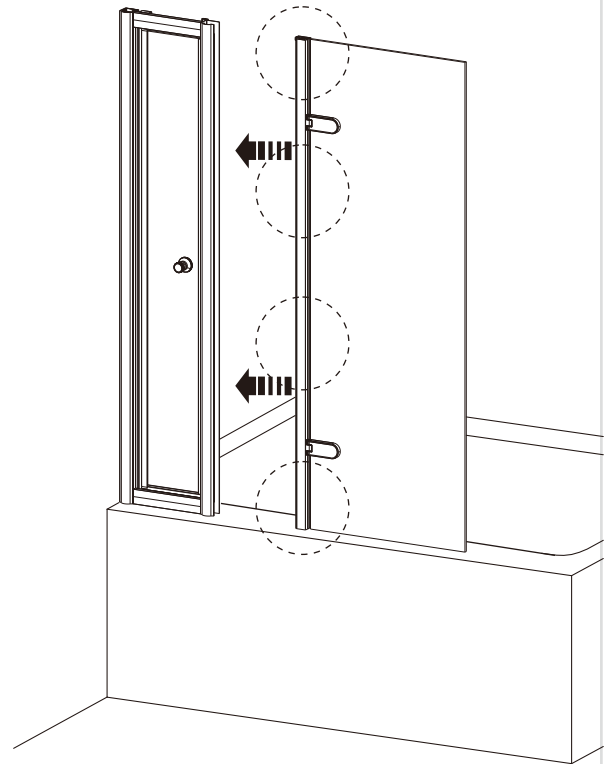


INSTALLATION

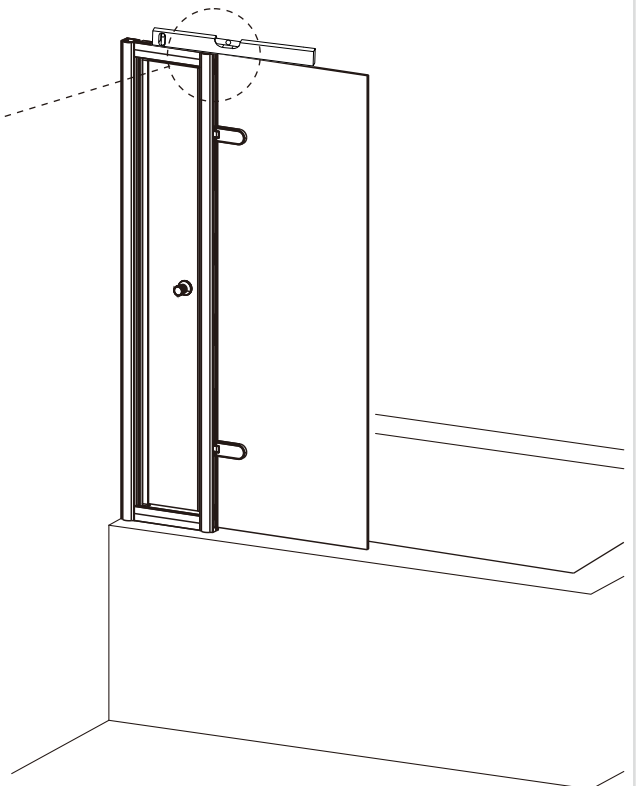
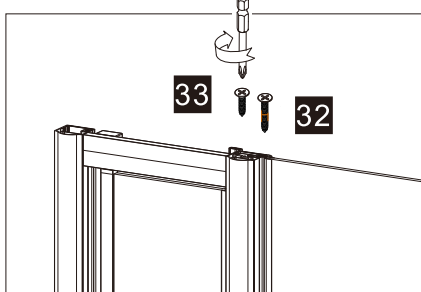
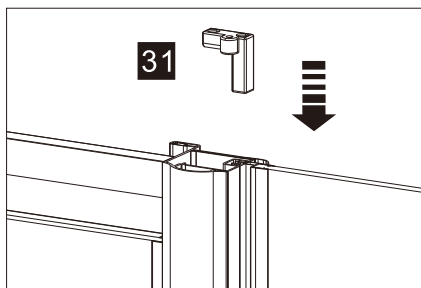
9



Profile cover 1487mm

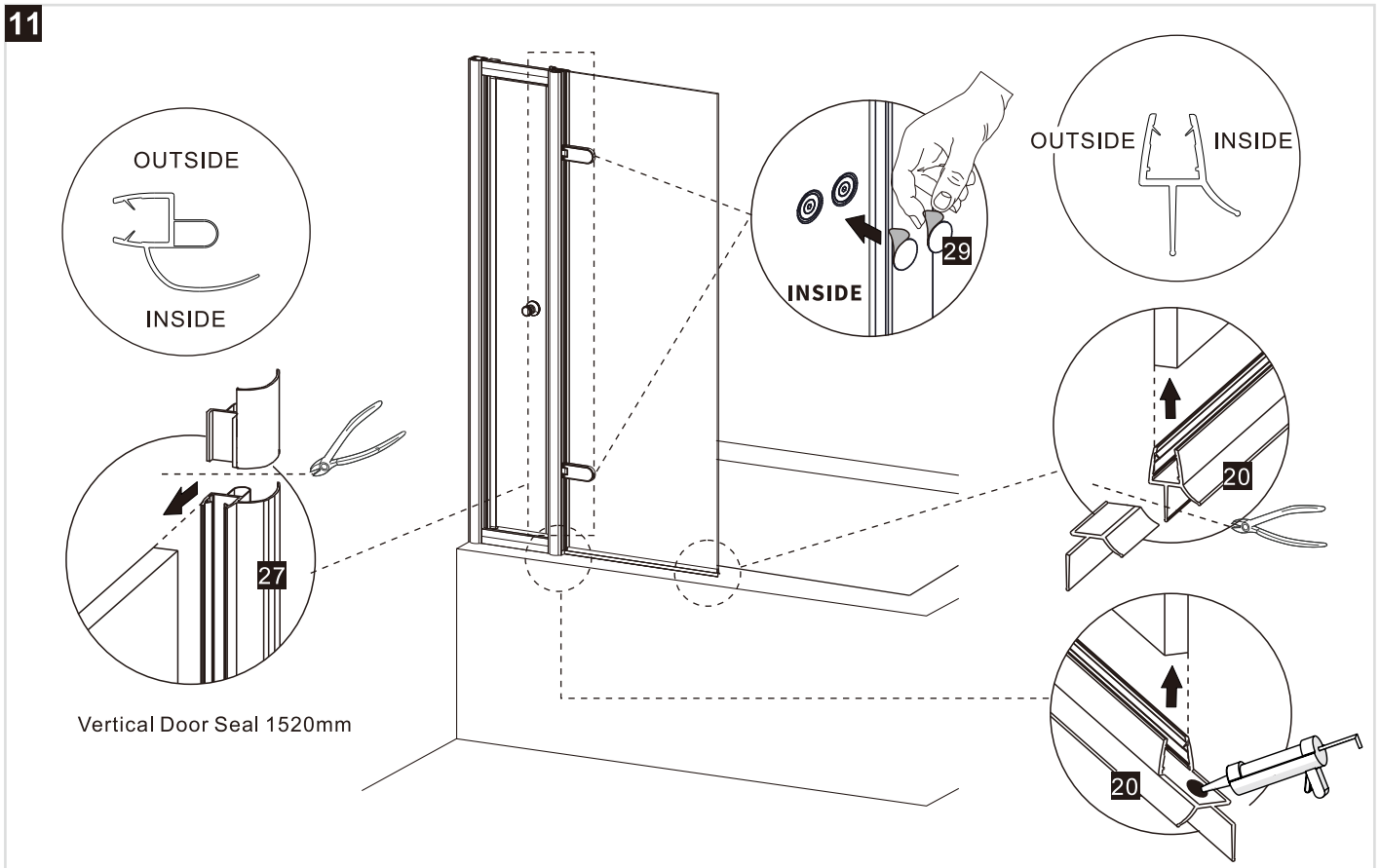


10

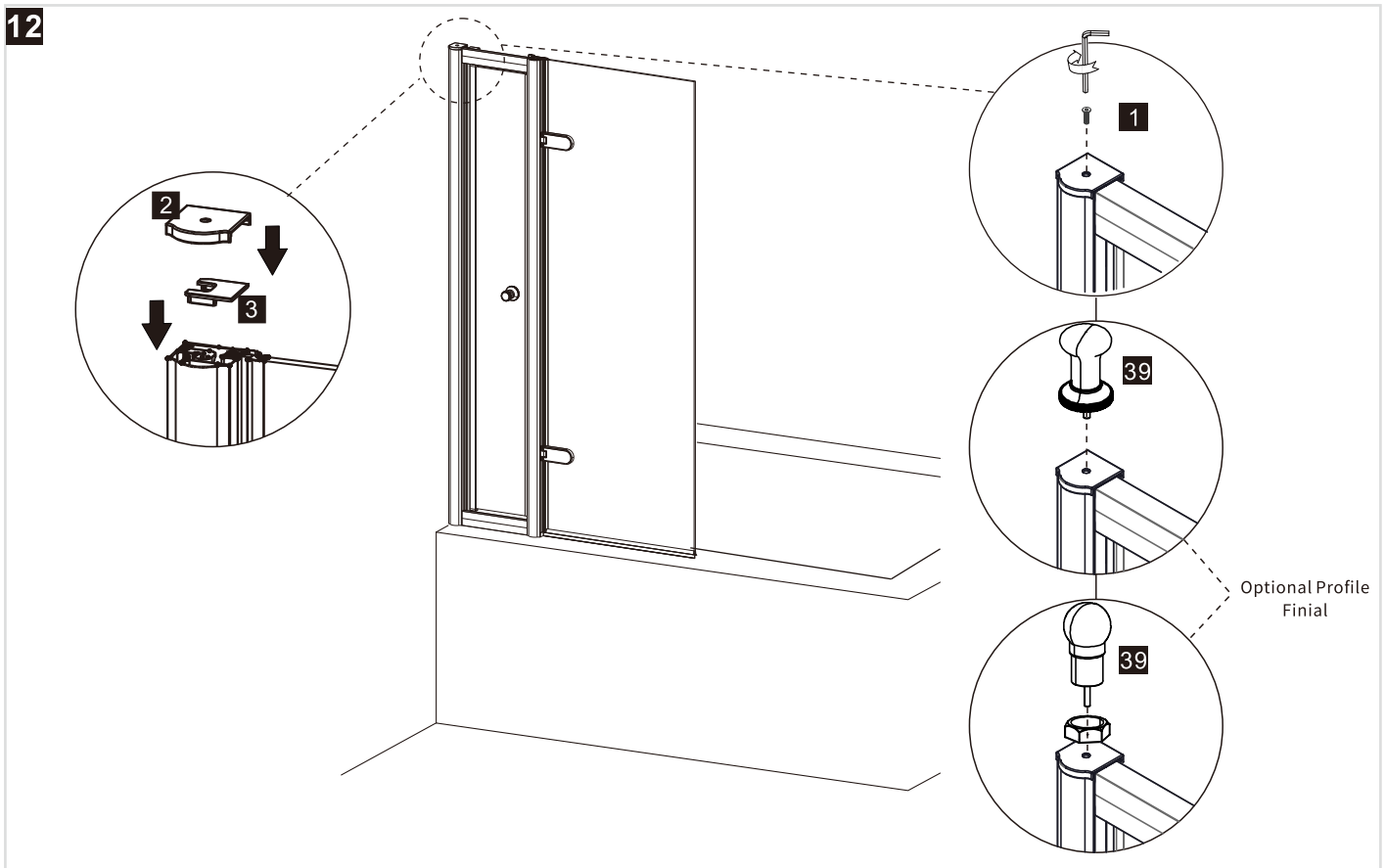


## INSTALLATION

11



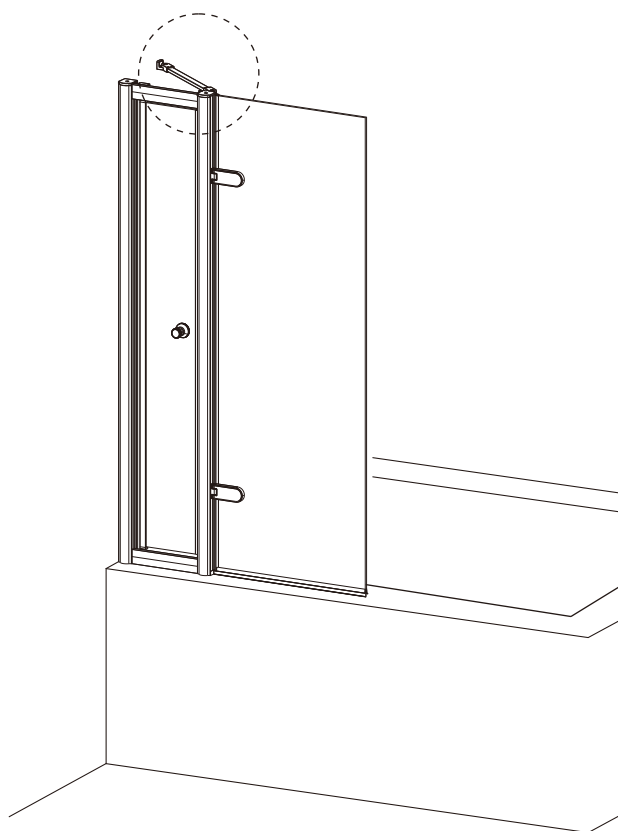
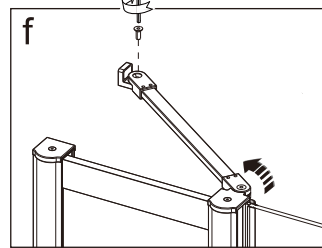
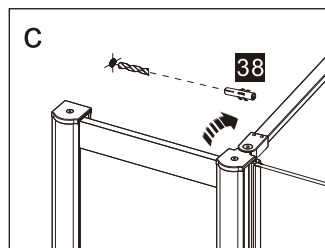
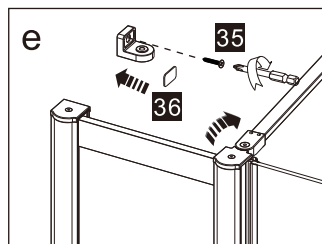
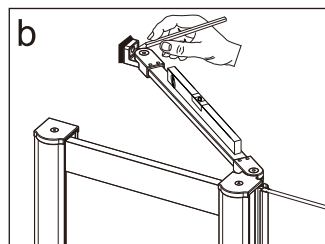
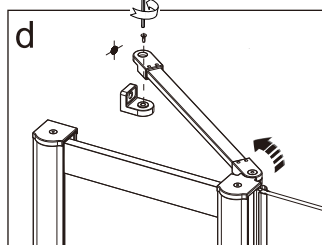
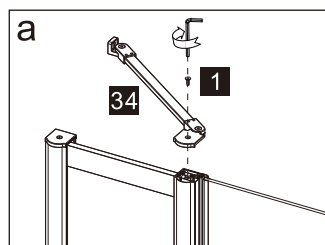
12



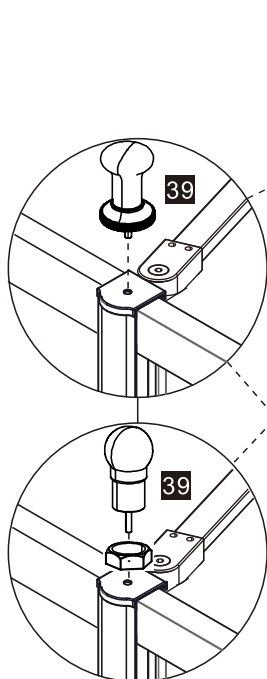
# INSTALLATION

*Burlington®*

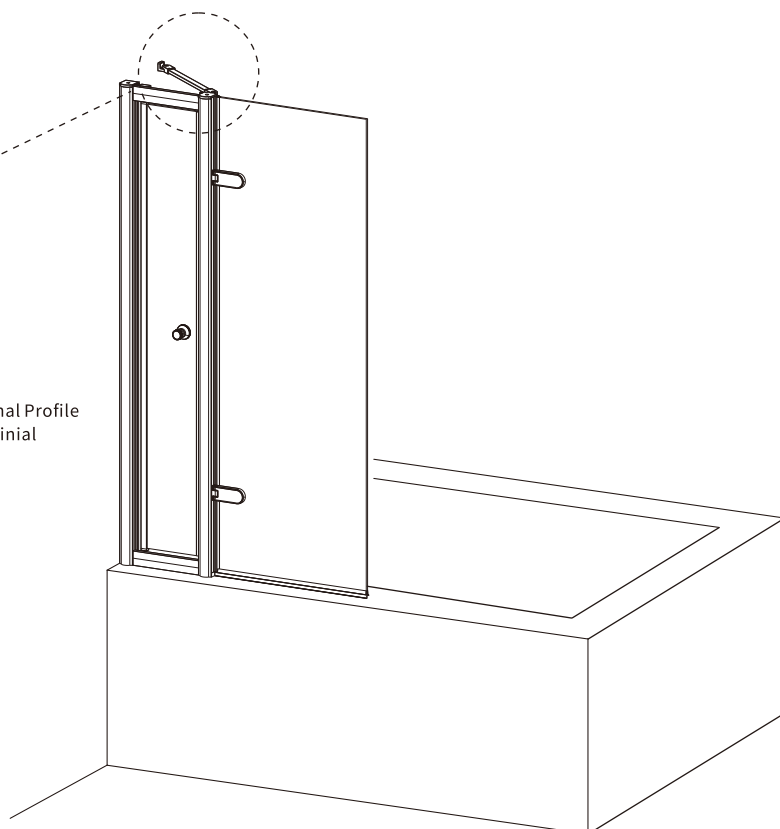
13



14



Optional Profile  
Finial

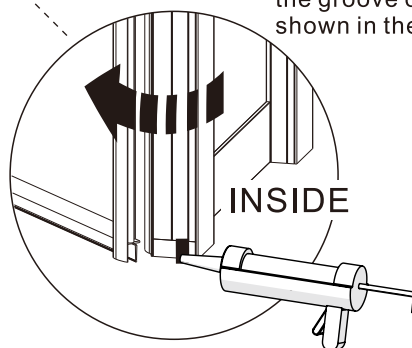
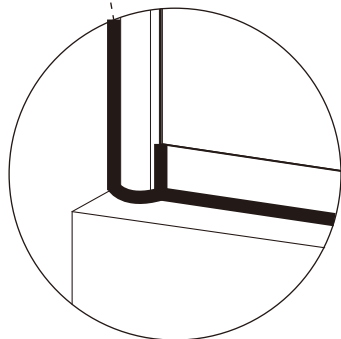
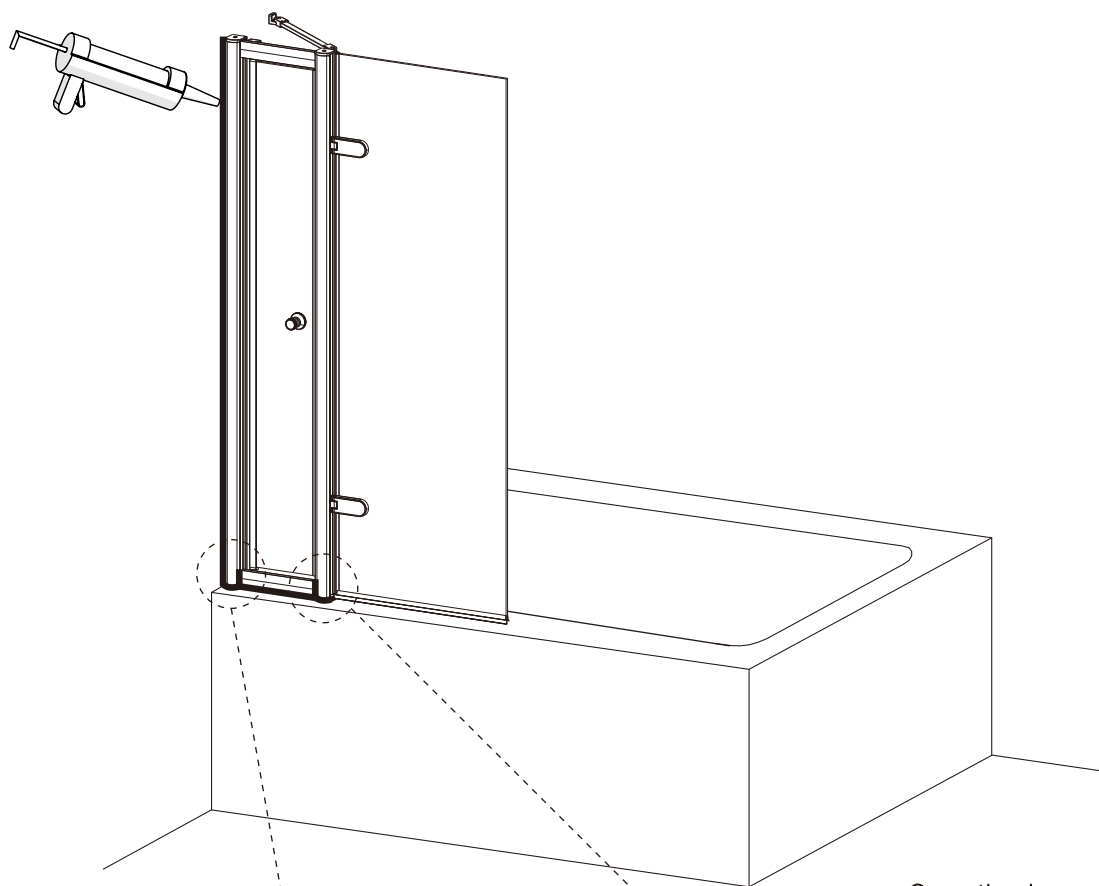




## INSTALLATION

*Burlington®*

15



Open the door and apply sealant to the groove of the bottom cover as shown in the diagram.

*Burlington*<sup>®</sup>

*Burlington*<sup>®</sup>

Part of the  
Bathroom Brands Group

We reserve the right to make technical modifications without prior notice.

*Burlington*<sup>®</sup>

Lake View House  
Rennie Drive, Dartford  
Kent DA1 5FU  
United Kingdom  
0345 873 8840  
[www.crosswater.co.uk](http://www.crosswater.co.uk)