

# CLASSIQUE

*Burlington®*

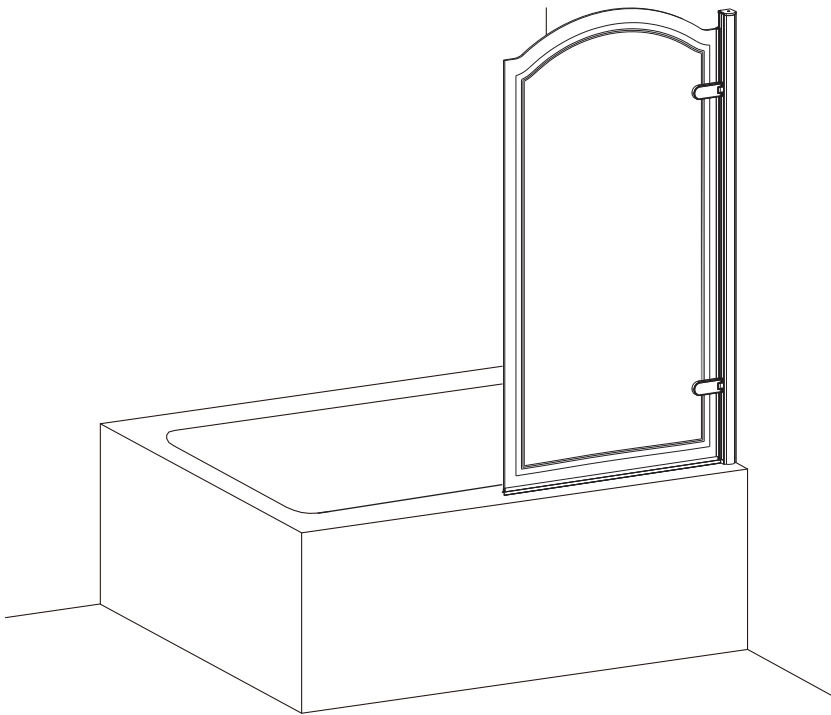
Curved Hinge Bath Screen with Plating / Frosting RH

## PRODUCT CODES:

CQBSCHC850RH

CQBSCHG850RH

CQBSCHL850RH



CQ1909PRFNx



CQ1850PRFNx

Optional profile finial (not supplied with bath screen)

## 1. Pre-Installation Checklist

### ☑ Before You Begin:

- Ensure all tiling/grouting is complete.
- Bathtub **must be level and sealed** to tiles.
- Verify door dimensions match your space (see Section 3).
- Check for hidden pipes/cables before drilling.

### ⚠ Safety Notes:

- **Two people required** for installation (glass is heavy!).
- Wear gloves when handling glass edges.

## 2. Unpacking & Components

### Confirm all parts are present:

- Please refer to all components included on following page titled “COMPONENTS”

### Missing/Damaged Parts?

Contact Bathroom Brands immediately: ☎0345 873 8840.

## 3. Step-by-Step Installation

### A. Frame Assembly

#### 1) Mark Drill Points:

- Use a spirit level to mark vertical lines for wall profiles.
- Drill 6mm holes at marked points; insert wall plugs.

#### 2) Attach Wall Profiles:

- Secure profiles with ST4x50mm screws (×4 total).
- Cover ends with profile caps if any.

### B. Door Installation

#### 3) Hang the Door:

- Following the instruction to assemble the door, ensure door is fully secured.
- Make necessary adjustment if door doesn't close smoothly.

#### 4) Apply Seals:

- Install necessary seals provided on door and side panel if any.

### C. Final Checks

#### 5) Level & Secure:

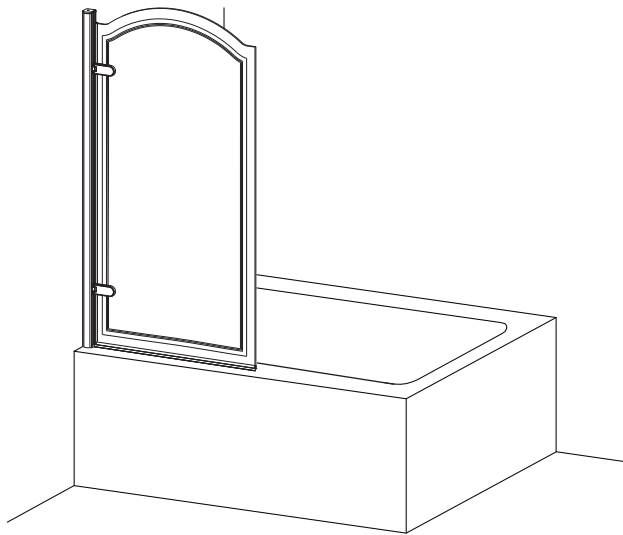
- Confirm door is level; tighten all screws.
- Let silicone cure for 24 hours before use.

## 4. Care & Maintenance

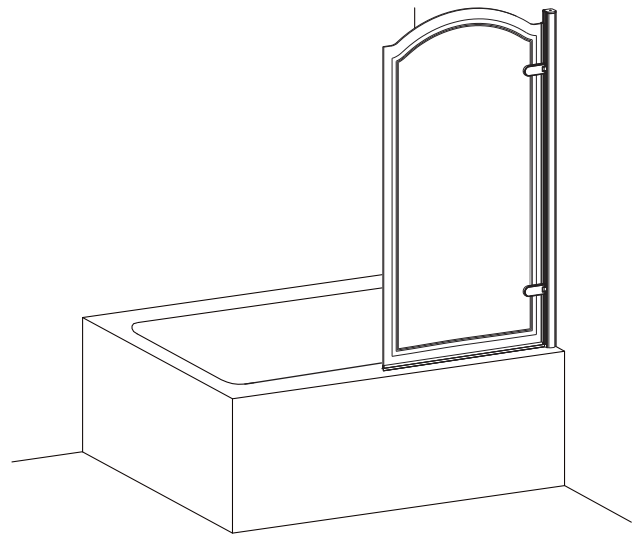
- **Cleaning:** Use only **pH-neutral soapy water** (pH 6.8–7.2).
- **Avoid:** Abrasives, solvents, or acidic cleaners.

Ensure seals are flush to prevent leaks.

## ORIENTATION



LH



RH

The bath screen has left and right hand versions, and they are irreversible.

### Tools Required (not supplied):

Spirit Level



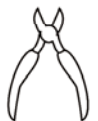
Torque Screw Driver



Pencil



Snips



Drill



6mm Drill Bit



Silicone



Measuring Tape

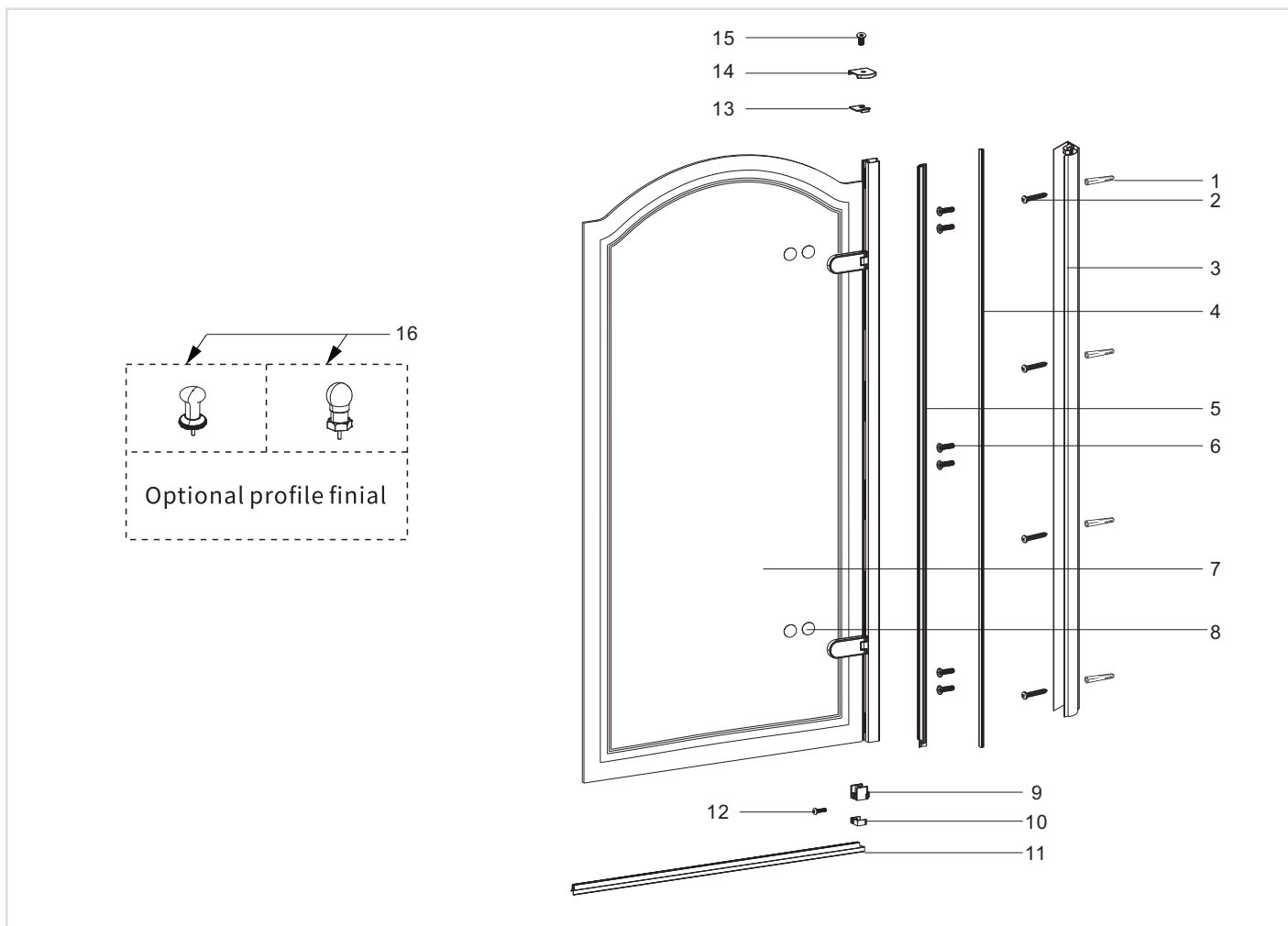


Knife



## COMPONENTS

*Burlington®*



1	Wall Plug		x4
2	ST4x50mm Screw		x4
3	Wall Profile		x1
4	Profile Cover		x1
5	Vertical Door Seal		x1
6	M5*30 Screw		x6
7	Moving Door		x1
8	Hinge Cap		x4
9	Gasket		x1
10	Cover Cap		x1
11	Bottom Seal		x1
12	M4*10mm Screw		x1
13	Adjustment Profile Cap		x1
14	Wall Profile Cap		x1
15	M5*14 Screw		x1
16	Optional Profile Finial		x1
17	Allen Key	4mm 3mm 2.5mm	

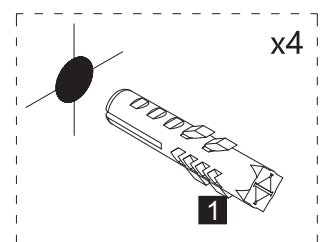
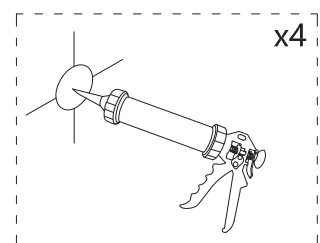
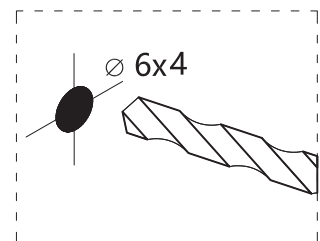
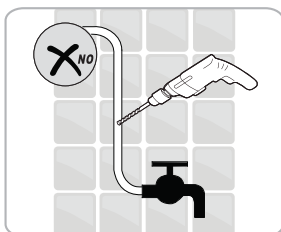
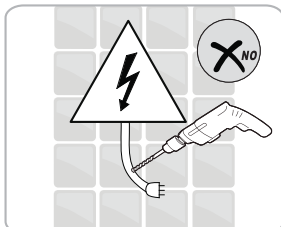
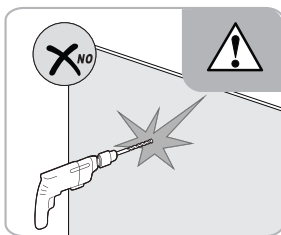
## INSIDE

## OUTSIDE

**TOP**

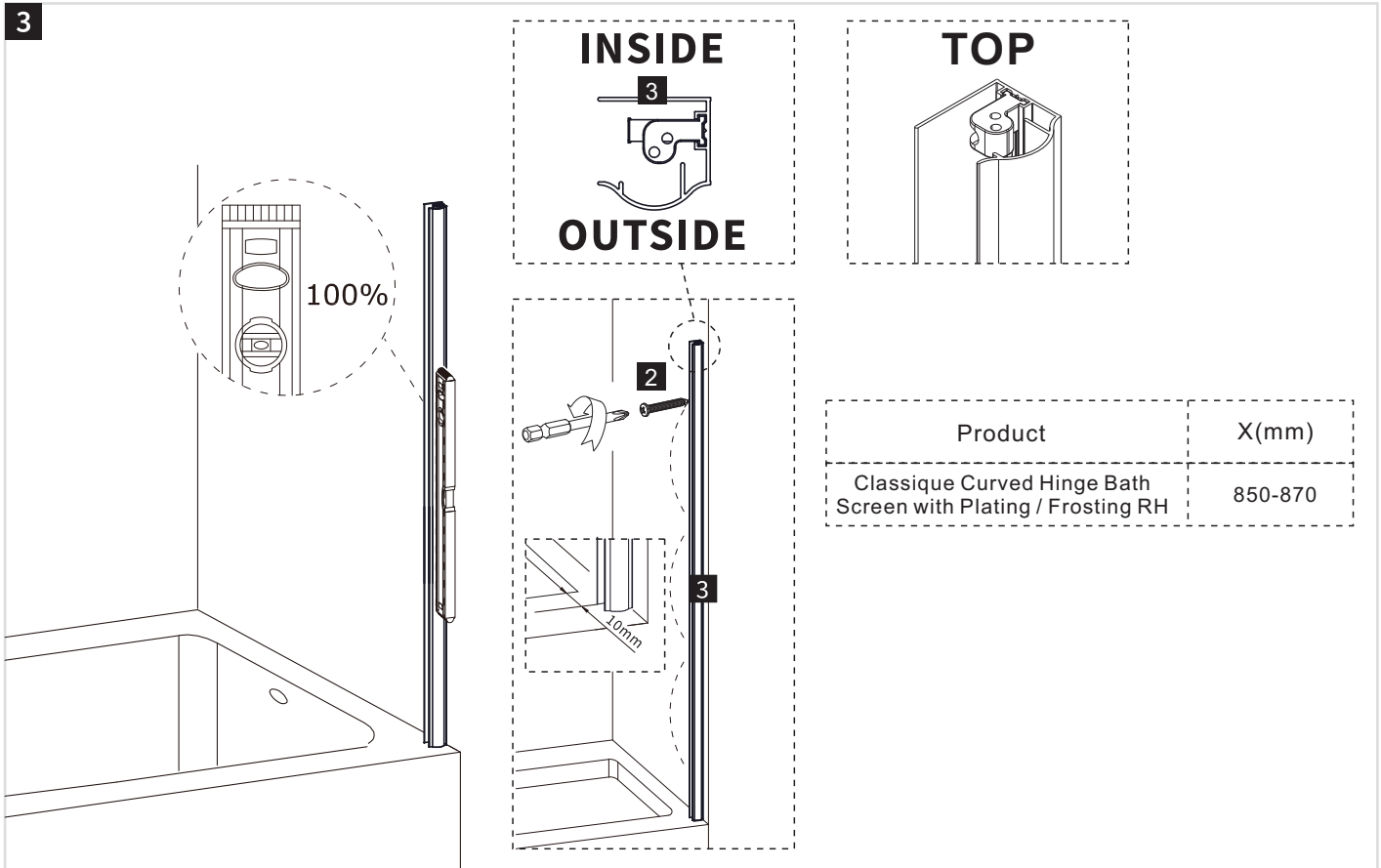
100%

10mm

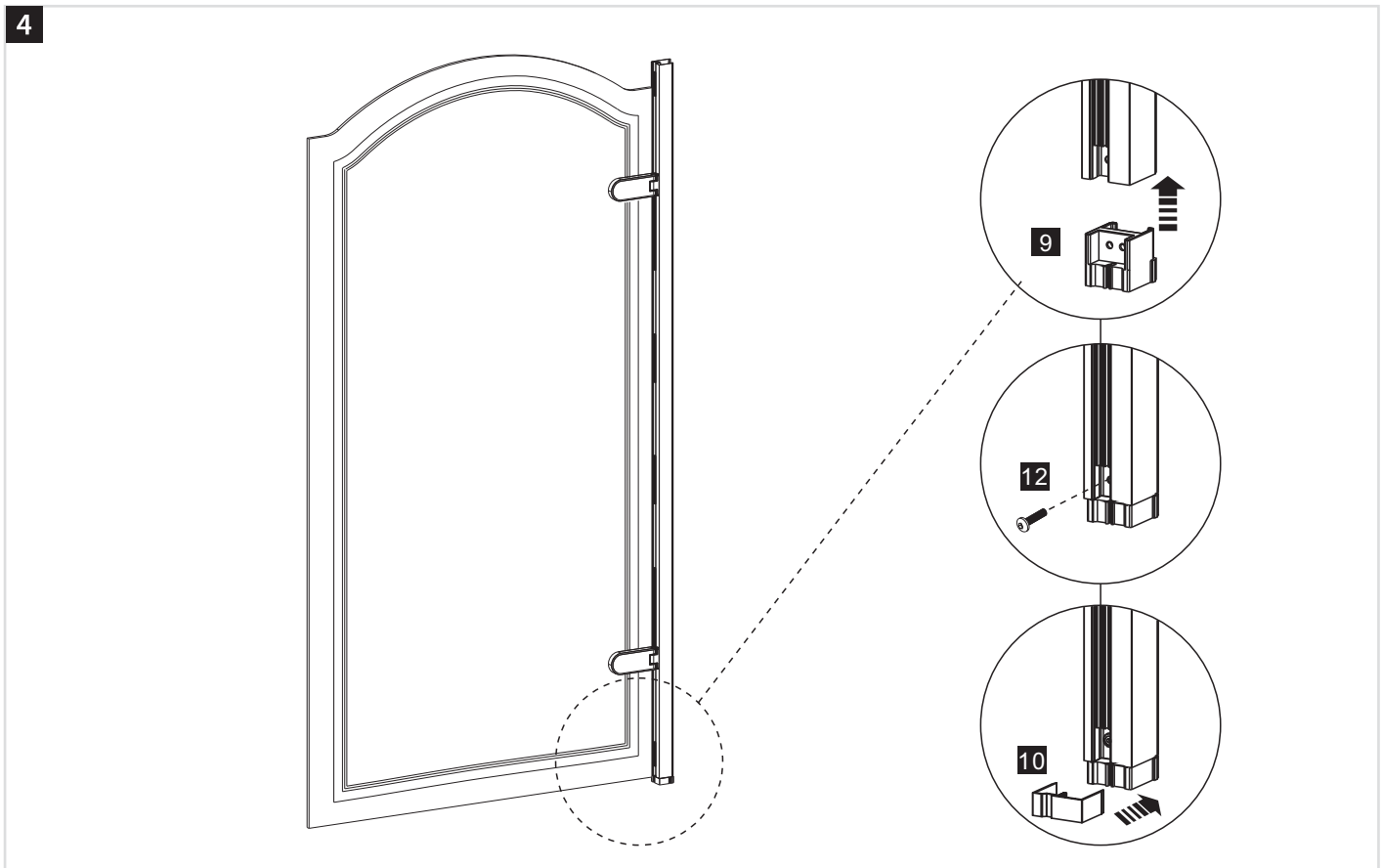
2

## INSTALLATION

3



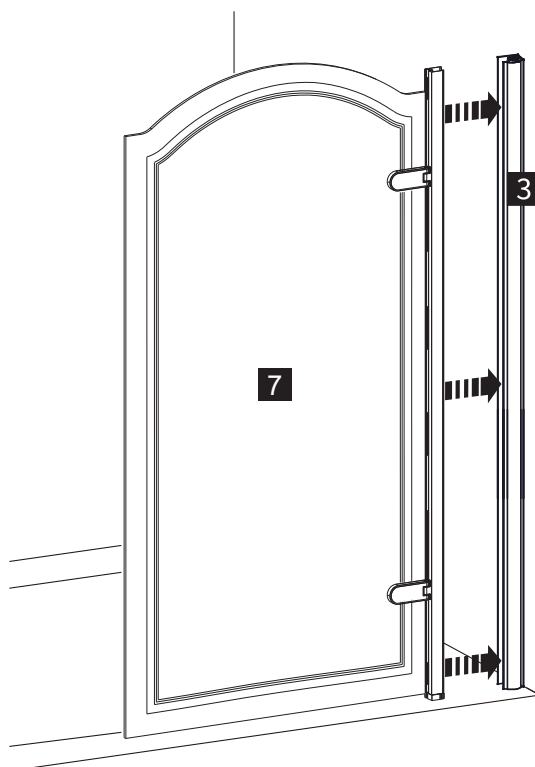
4



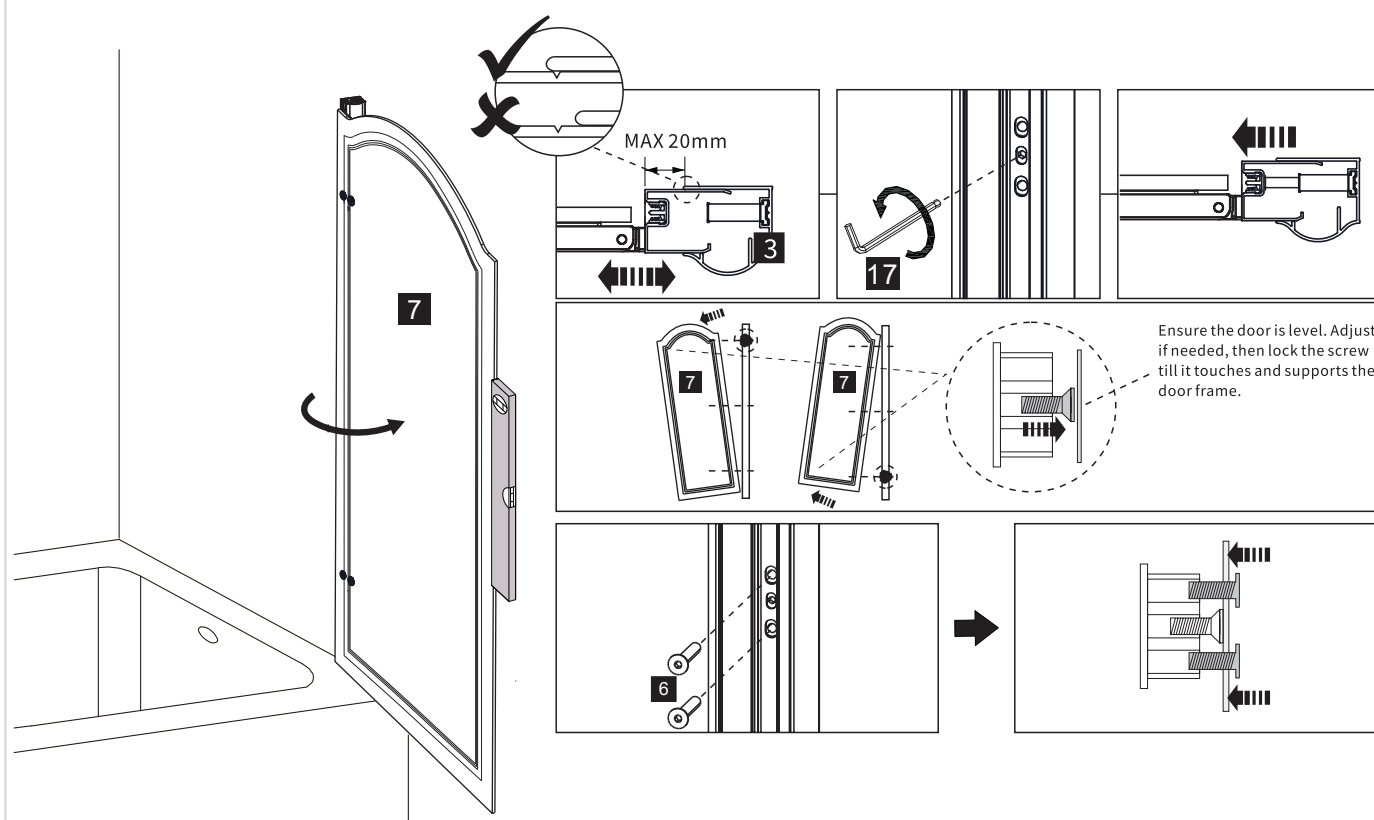
## INSTALLATION

*Burlington®*

5



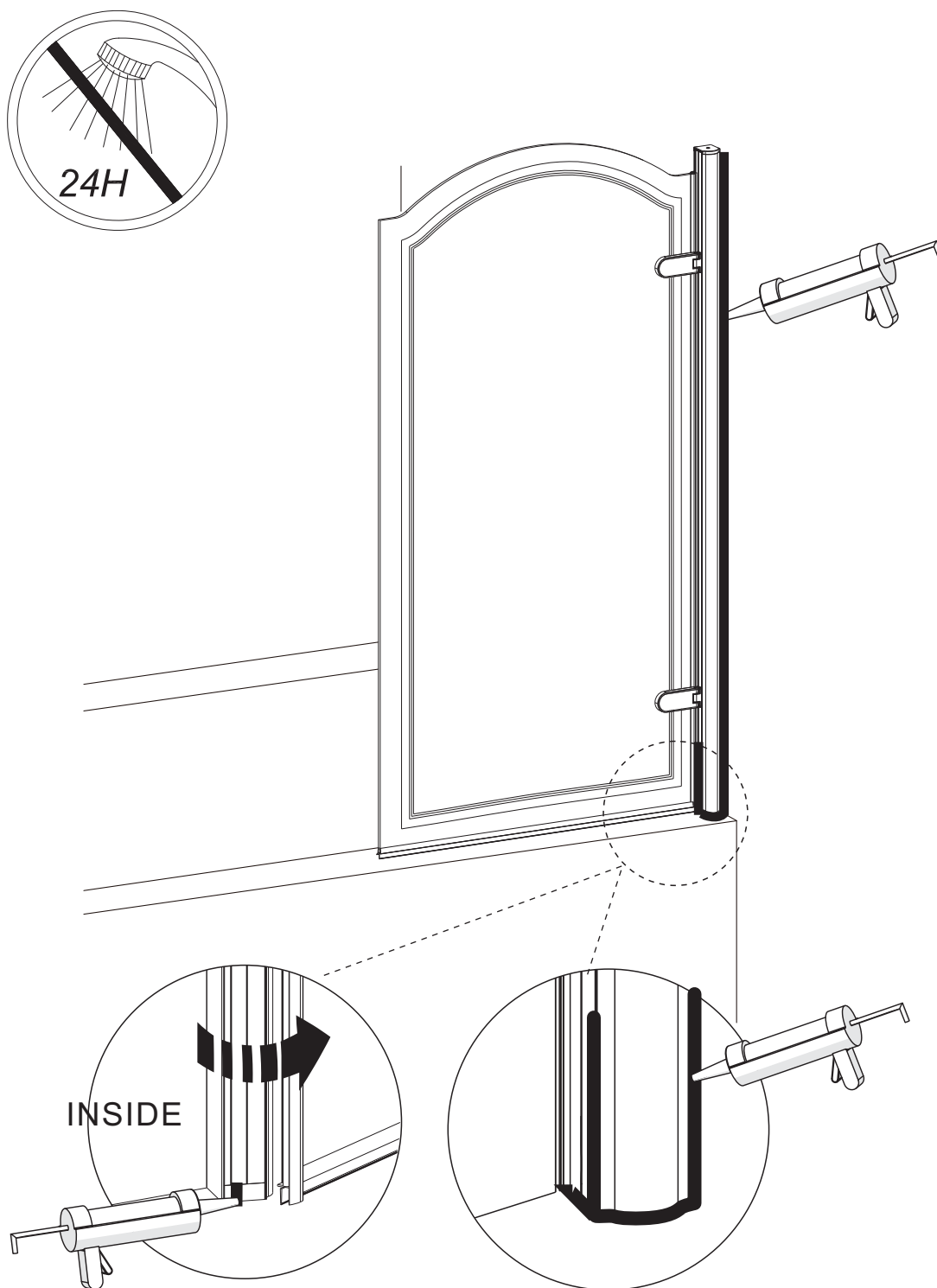
6



7







Open the door and apply sealant to the groove of the bottom cover as shown in the diagram.

*Burlington*<sup>®</sup>

*Burlington*<sup>®</sup>

Part of the  
Bathroom Brands Group

We reserve the right to make technical modifications without prior notice.

*Burlington*<sup>®</sup>

Lake View House  
Rennie Drive, Dartford  
Kent DA1 5FU  
United Kingdom  
0345 873 8840  
[www.crosswater.co.uk](http://www.crosswater.co.uk)